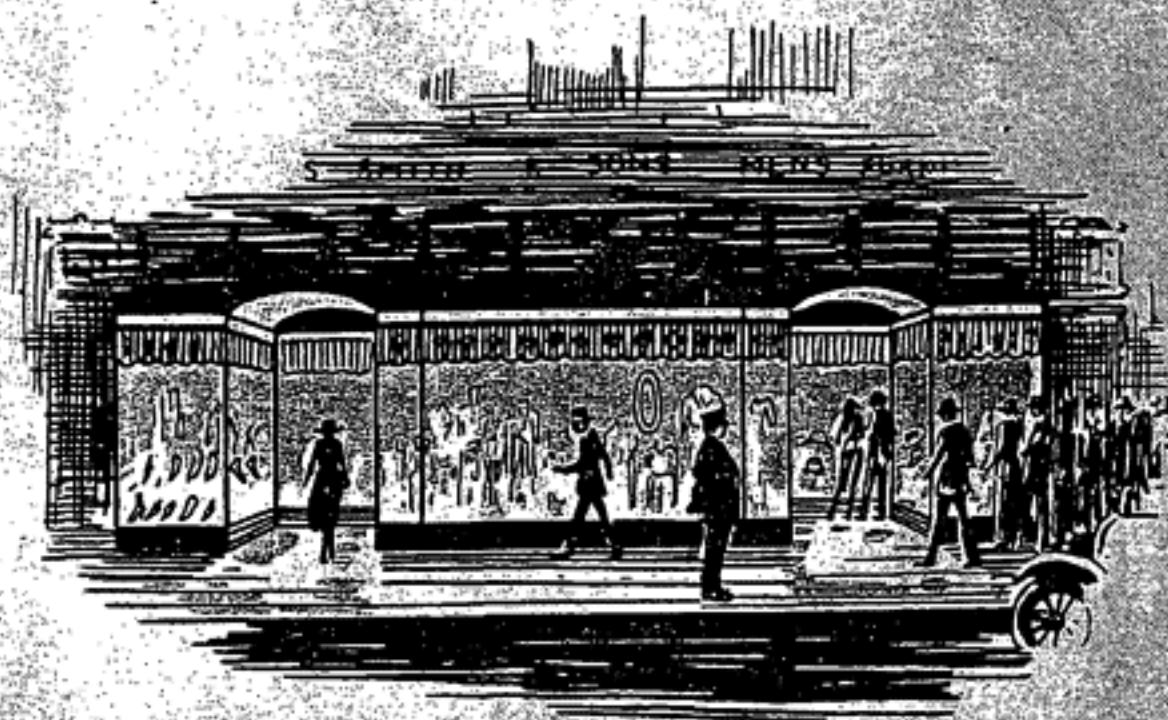


# MESKER

STORE FRONTS  
*and*  
METAL BUILDING PRODUCTS

---



GEO. L. MESKER & CO.  
EVANSVILLE, IND.



# Mesker Quality Building Products

Mesker Complete Store Fronts.....	Pages 4 to 8
Mesker Marquise.....	Pages 9 to 11
Mesker Bowstring Trusses.....	Pages 12 to 13

	Page		Page
Air grates .....	19	Kalamein doors .....	21
Airplane Hangars .....	12	Lamp standards .....	15
Anchors, joist .....	18	Metal Windows .....	21
Angles .....	18	Plates, fitch .....	19
Ash dumps .....	19	Pipe railing .....	17
Ash pit doors.....	19	Putty .....	18
Balcony railing .....	17	Reinforcing bars .....	14
Basement columns .....	19	Rolling steel doors .....	21
Basement windows .....	18	Rolscreens .....	22
Casement windows .....	22	Sidewalk doors .....	17
Cast iron columns.....	14-19	Skylights, metal .....	20
Clean out doors.....	19	Steel buildings .....	16
Coal chutes .....	19	Steel casement windows.....	22
Coal hole covers.....	15	Steel ceilings .....	11
Dampers, fire place.....	18	Steel sash .....	20
Doors, fire .....	24	Steel shutters .....	17
Doors, Kalamein .....	21	Steel trusses .....	12-13-16
Doors, Rolling steel.....	21	Thresholds, iron .....	19
Fenestra sash .....	23	Ventilators, roof .....	20
Fire escapes .....	17	Wheel guards .....	15
Fireplace dampers .....	19	Window guards .....	17
Garages .....	11	Windows, metal .....	21
Hangars .....	12		

## Personal Service

Within a reasonable distance of Evansville we will arrange for our sales engineers to call on prospective customers without charge or obligations. To customers remote from Evansville who write us for designs, engineering advice or estimates we will give personal service and individual attention.

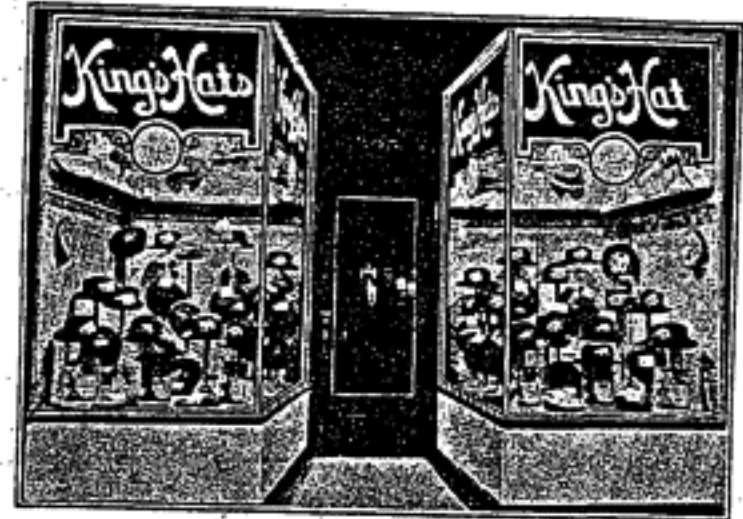
All inquiries are carefully analyzed, every communication is studied so that we may recommend the proper kind of material at a reasonable price. You will help our estimator correspondents by giving full details and measurements when sending us your inquiry.

We have hundreds of customers who have been on our books for many years whom we have never seen and whom we continue to serve year after year to our mutual satisfaction. Our satisfied customers are our best advertisers. Let us show you what we can do.

**GEO. L. MESKER & CO.**  
EVANSVILLE, INDIANA

## Mesker Complete Store Fronts

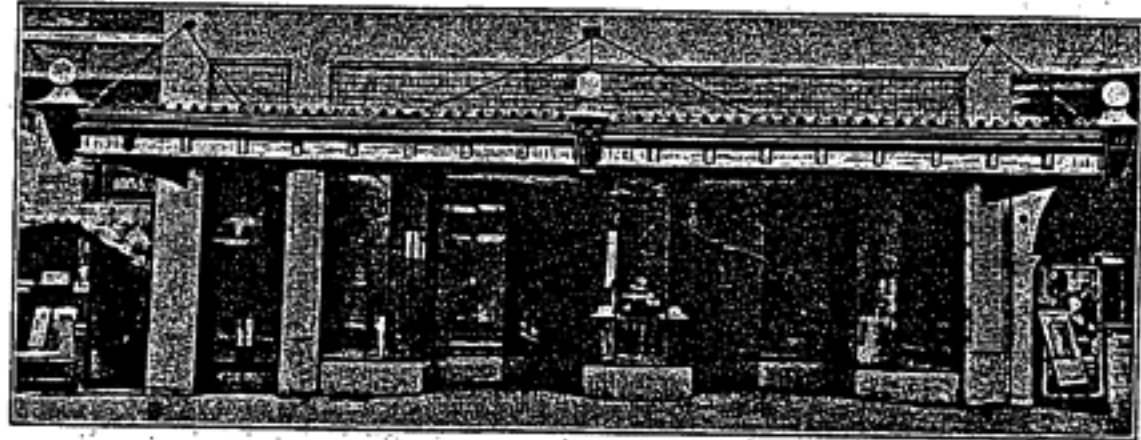
Our store front department gives complete satisfaction to builder and merchant. We commence our service by furnishing up-to-date designs made by experts. Then we furnish detailed specifications and an itemized quotation on the complete front—steel, copper setting, millwork, glass, marble bases, kick plates, threshold strips, etc. The work is gotten out under one supervision according to large sized detail drawings which are checked and rechecked to avoid any mistakes. Full erection information and details which are furnished when shipment is made simplify the installation. Our responsibility ceases when the customer is completely satisfied with the job.



## Mesker Marquise

Our experience in designing and furnishing Mesker Marquise of all types for the finest moving picture houses, theatres, auditoriums, and business buildings enables us to supply the most handsome designs at a very reasonable cost. We have been making sheet metal products for over half a century and our material is gotten out in such a way that it can be put together in a minimum length of time when it reaches the job. Mesker Marquise are performing service in every State in the Union which alone demonstrates that we are in position to satisfy the most discriminating customers and that our prices are right.

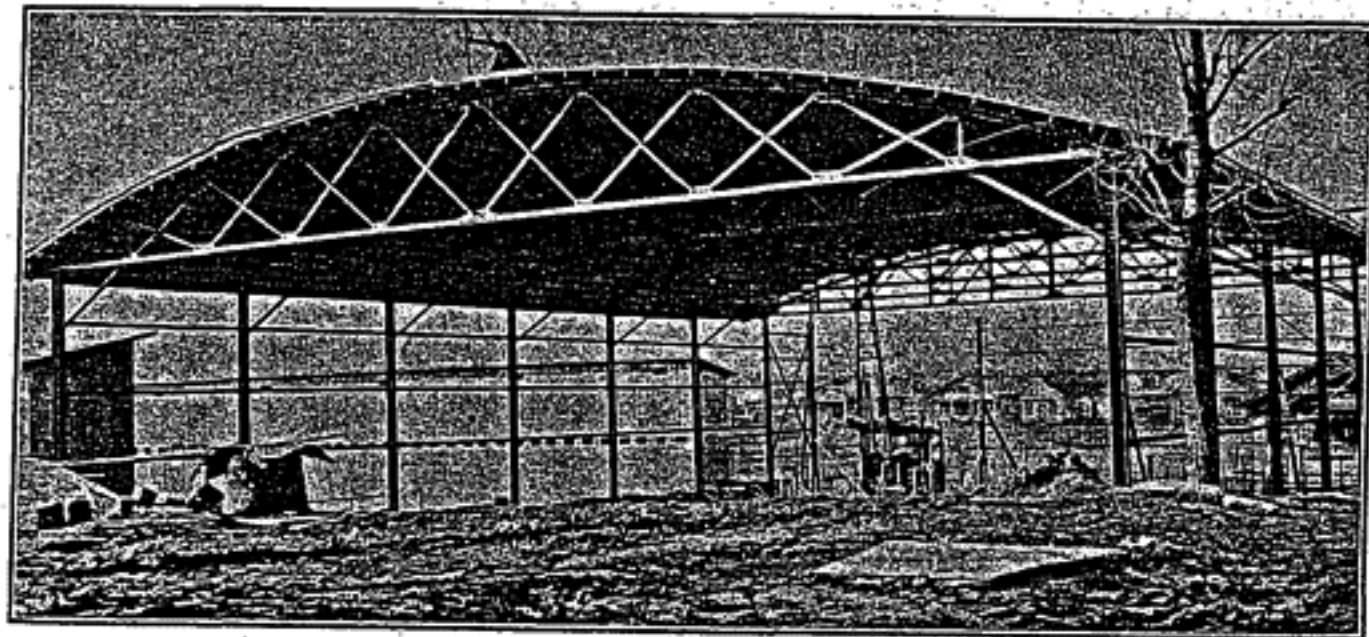
See pages 9 to 11 for further particulars.



## Mesker Standard Bowstring Steel Roof Trusses

We issue a special 24 page catalog descriptive of Mesker Standard Bowstring Steel Roof Trusses, the most economical steel roof support on the market. We are making these trusses in large quantities according to standard details in our shop which has been especially equipped for their production. "Better Trusses for Less Money". So we say:

Send for our bowstring steel roof truss catalog.

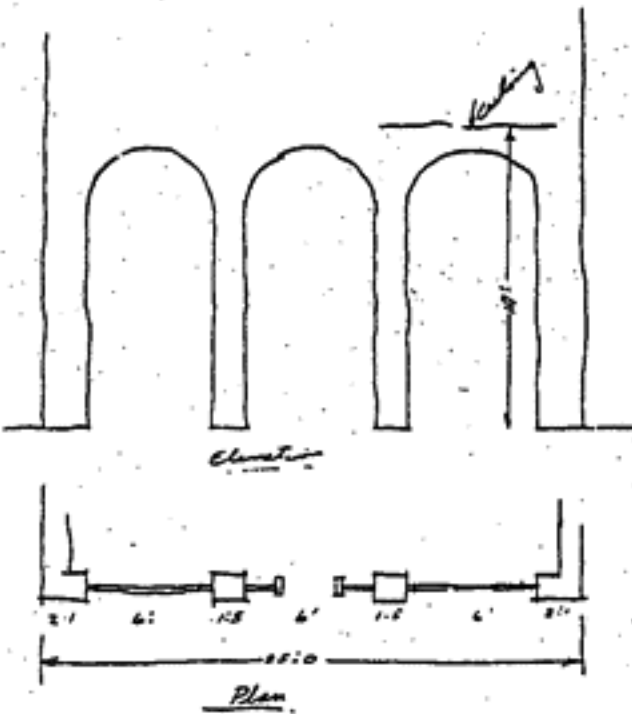


## Mesker Miscellaneous Building Specialties

On pages 18 to 24 of this catalog you will find illustrations and descriptions as well as prices of various metal building specialties which we manufacture. Our line includes numerous items for use in residences such as coal chutes, cleanout doors and frames, fireplace dome dampers, ash dumps, fitch plates for over front porches, basement columns, steel angle lintels, basement windows and joist anchors. We furnish fireproof products including Kalamein doors and frames, hollow metal windows, steel rolling doors, and standard tinclad fire doors and hardware. Mesker products are of quality material and manufacture. We do not claim to have the cheapest material but we do have the best value for the money. It does not pay to use cheap building products. Buy the best and be satisfied. Special prices are quoted to dealers who purchase these items for stock.



## Mesker Designs Help You Get the Business



Thousands of builders are using our service department, presenting our blue prints with their bids. In making their proposition with an attractive drawing attached they secure favorable attention of the buyer and in most cases the contract. Our show window layouts are the most attractive, special attention being given to furnishing the proper kind of display spaces for the particular kind of merchandise that is to be sold. Have our experts design the front for your next job.

Send us a rough sketch with measurements showing about the arrangement required and we will submit free of charge, a neatly finished blue print of a Mesker Business-getting Store Front. Also our bid on the complete front including the structural steel, Marble bases, copper glass setting, plate glass, transom glass, and millwork. Our bid is sent in detail. You will know exactly what you will get, also the quality is of the best.

Send us a rough sketch like this for a remodeling job and we will send you blue prints like this to show your merchant customer.



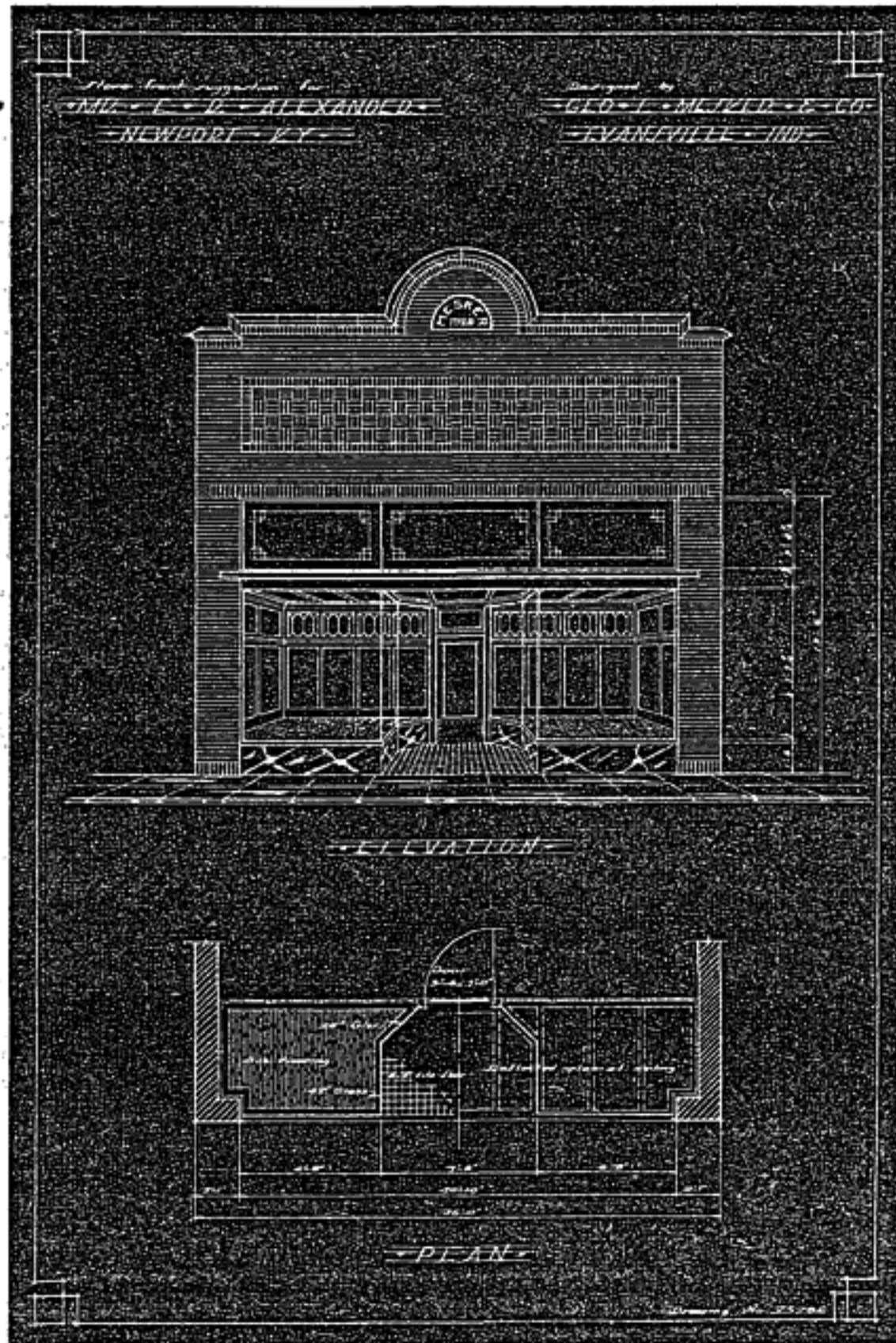
## Free Architectural Service Department

Garage plans for simple one story structures to multi-story buildings involving fireproof floor construction, ramps, and heavy steel girders for long spans will be furnished free on receipt of rough sketches. Our plans and estimates are always laid out for the most economical construction, stock sizes of steel shapes are called for insuring low cost and prompt shipment.

It is our ambition to serve you and to help you land the most attractive and profitable work.

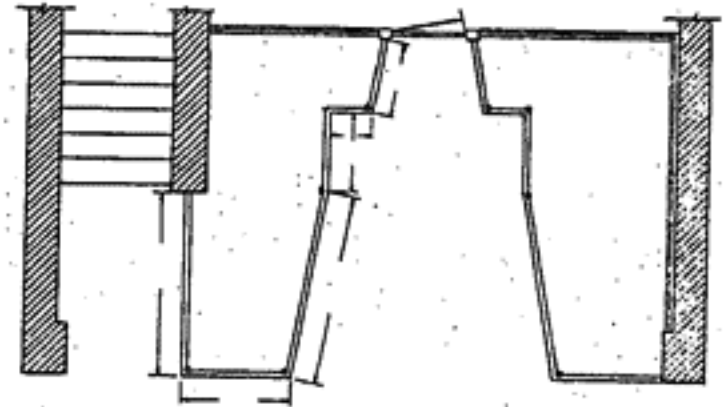
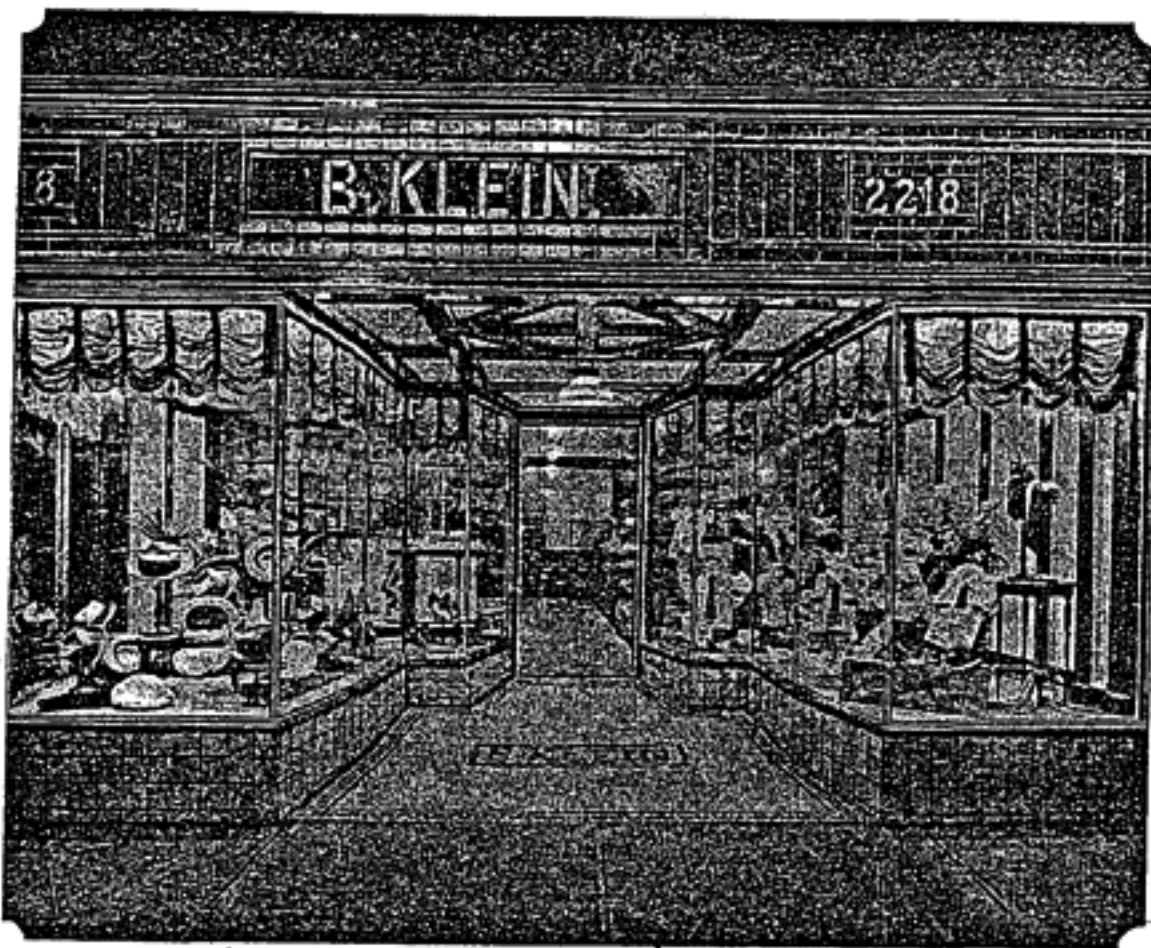
Large sized detailed working drawings are always furnished with our material simplifying the installation.

Prompt shipment can be depended on. Railroad service from Evansville cannot be excelled anywhere. We ship everywhere. "Depend on Mesker for service".



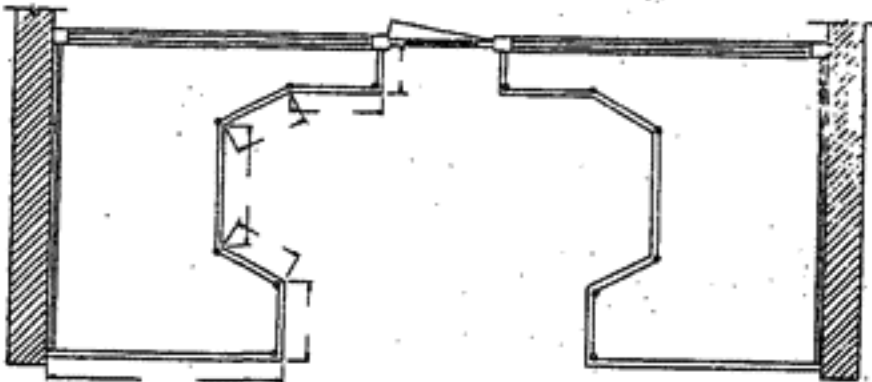


# Mesker Designs Are Different



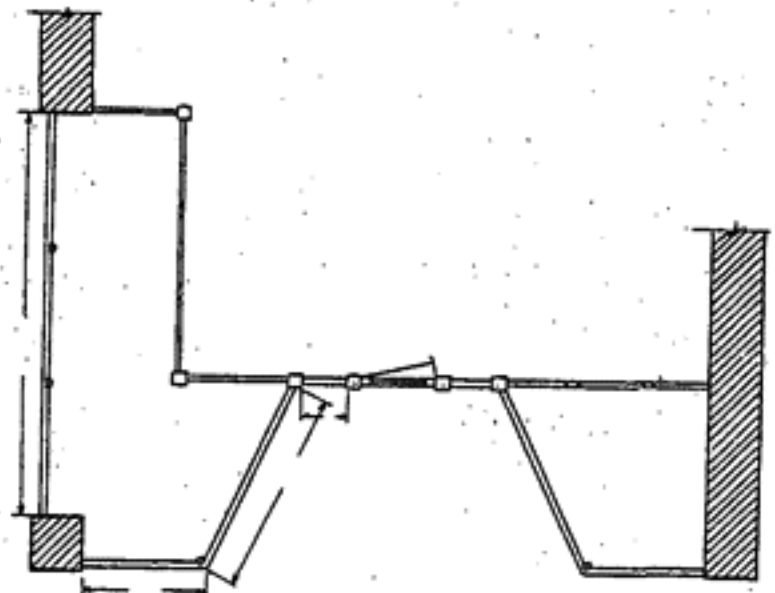
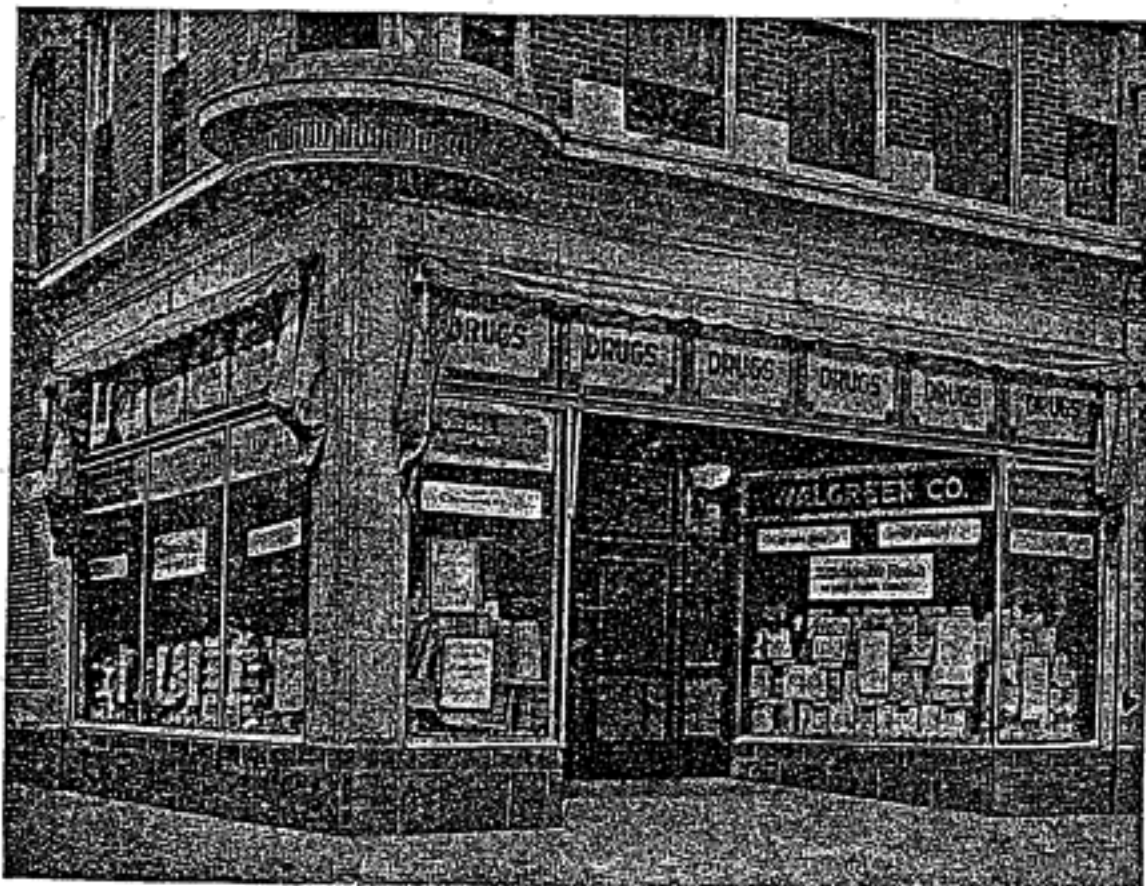
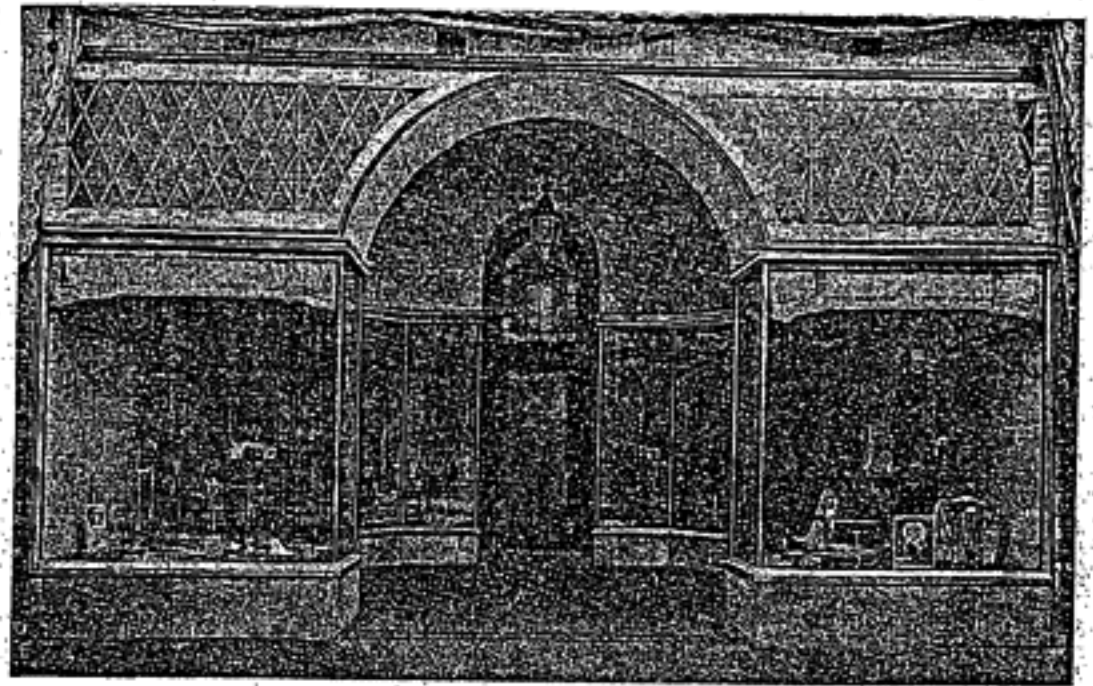
Mesker Design No. 28

A good use of window space. This is a deep front with a break in the line to make it more interesting and attractive. This owner took advantage of an upstairs entrance at the left, to put a light of plate glass along the way. Eye-catching fronts like this certainly pay for themselves quickly, in increased profits.



Mesker Design No. 29

Here is a bit different type of vaulted ceiling combined with arched entrance, producing a spacious looking front, much more impressive than a squat paneled ceiling. The recessed design gives the limit of window space, so necessary to a steady volume of business. Mesker designs cover every possible need in the most effective and economical way.



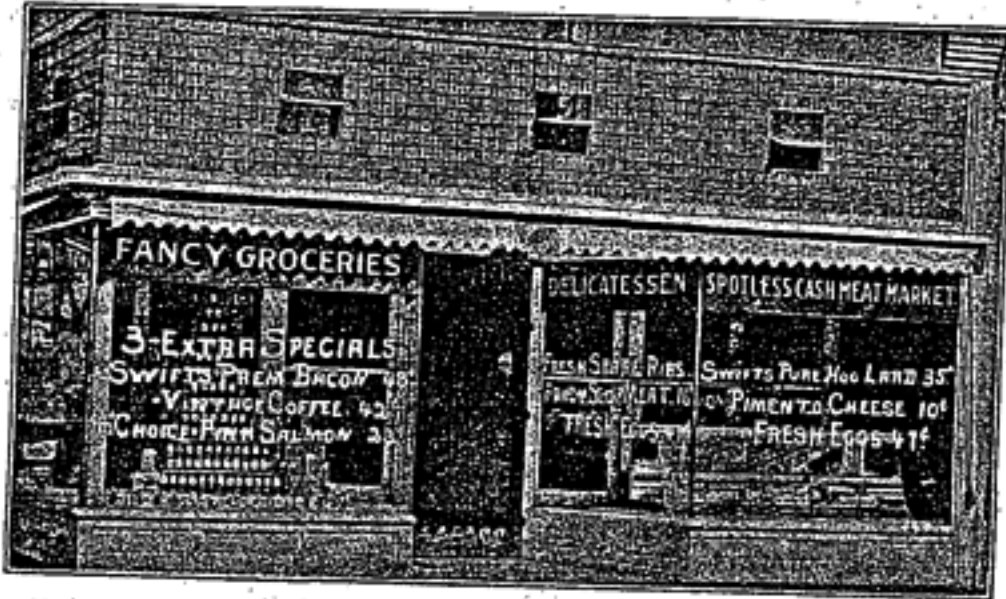
Mesker Design No. 30

It is difficult for a drug store to get a deep entrance with all the window space it should have, on account of the room required by wall cases. The above design with flaring windows makes a very effective arrangement, giving easy access to the door. Even though this is a corner, the center entrance makes the large side windows possible—a big advantage.



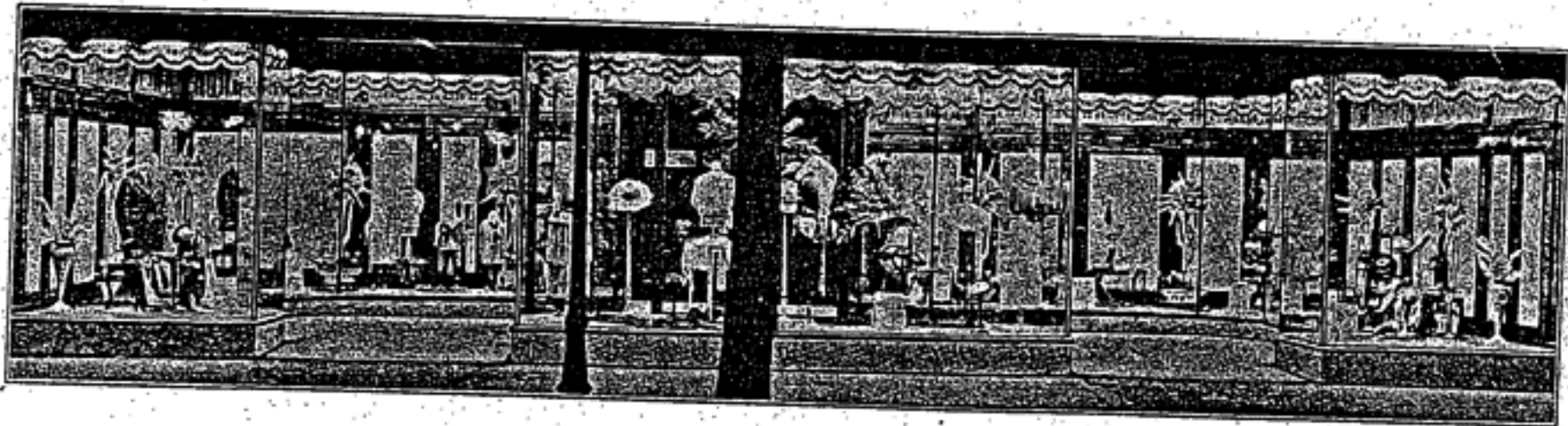
# Mesker Complete Store Fronts are Standard Everywhere

"Mesker Complete Store Fronts" include designing and furnishing structural steel, marble bases, Brasco copper setting, plate and prism glass, and millwork. We supply the material in such a manner that it can be installed by any carpenter who will follow large size detail drawings which we prepare for every job.



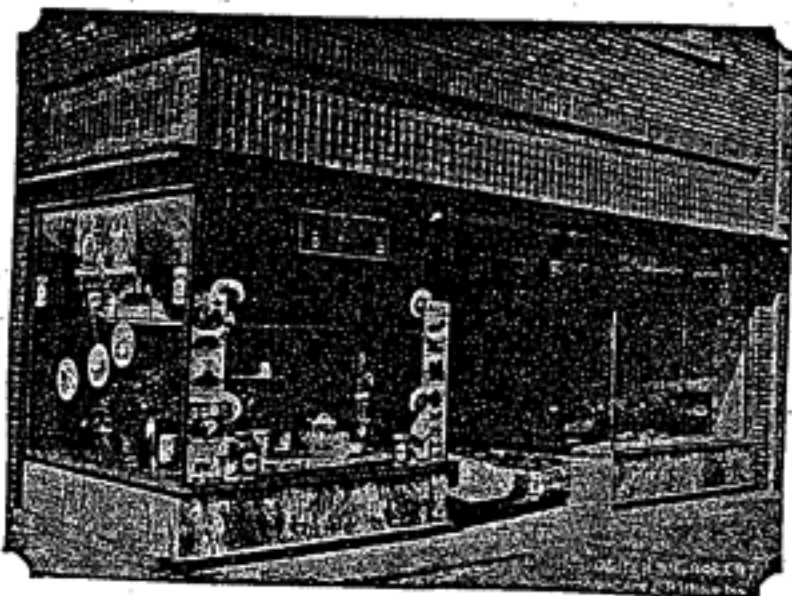
SPOTLESS MEAT MARKET

These pictures of recent installations of Mesker Store Fronts will give you an idea of the variety of our products. Mesker fronts are adapted to the largest metropolitan mercantile establishments as well as to modest, small town stores. Our fronts have pleased thousands of progressive merchants all over the country. Attractive show windows soon pay for themselves by increasing sales.



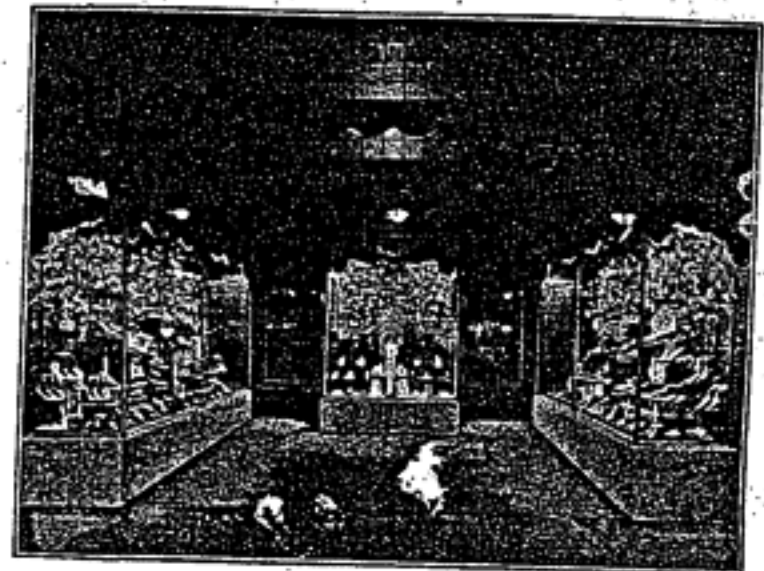
WEILLE'S DEPARTMENT STORE

The secret of the success of the Mesker Store Front is the fact that we are specialists. We do not do a general planing mill business. We make store fronts and store fronts exclusively. Our buyers know what to buy and our men know how to produce real store fronts. Mesker fronts are made right and out of the right kind of stuff.



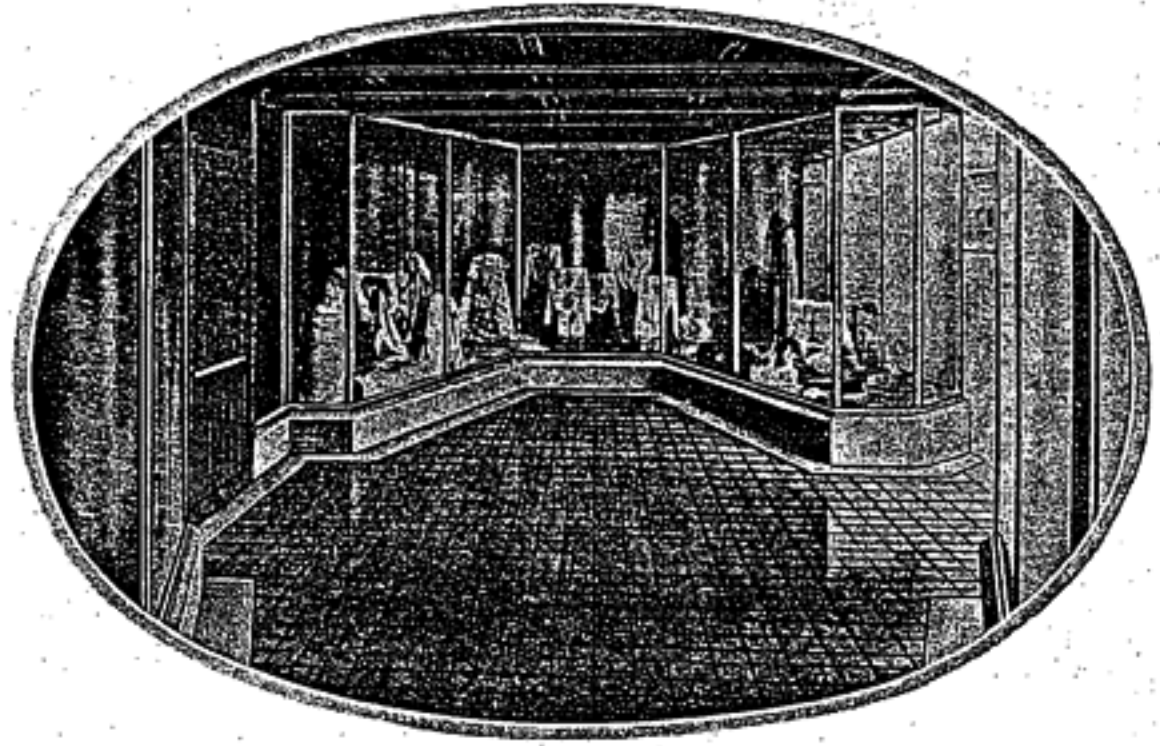
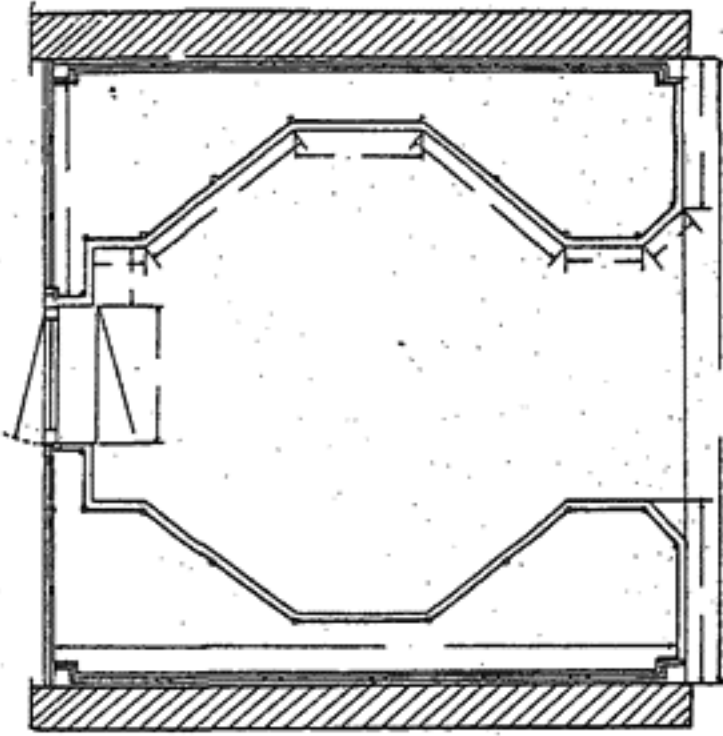
OGDEN—Groceries

MESKER  
FRONTS  
ARE  
DIFFERENT



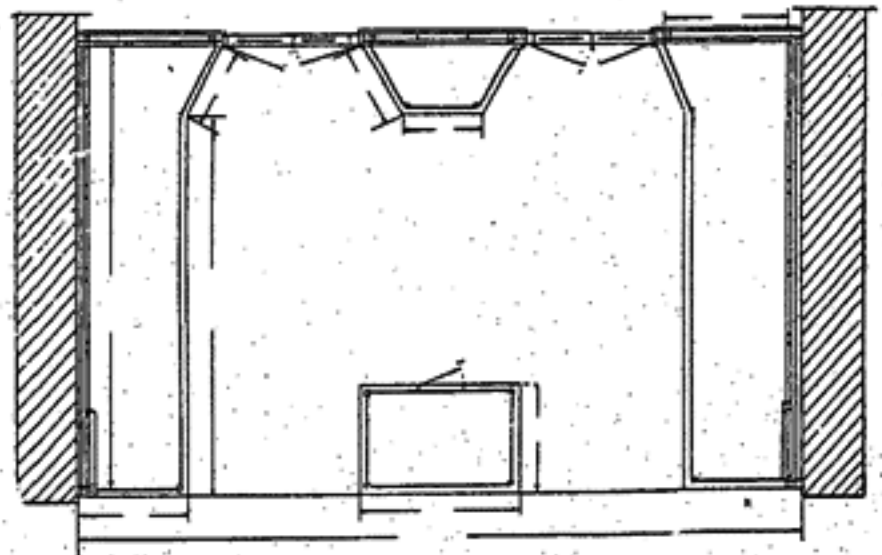
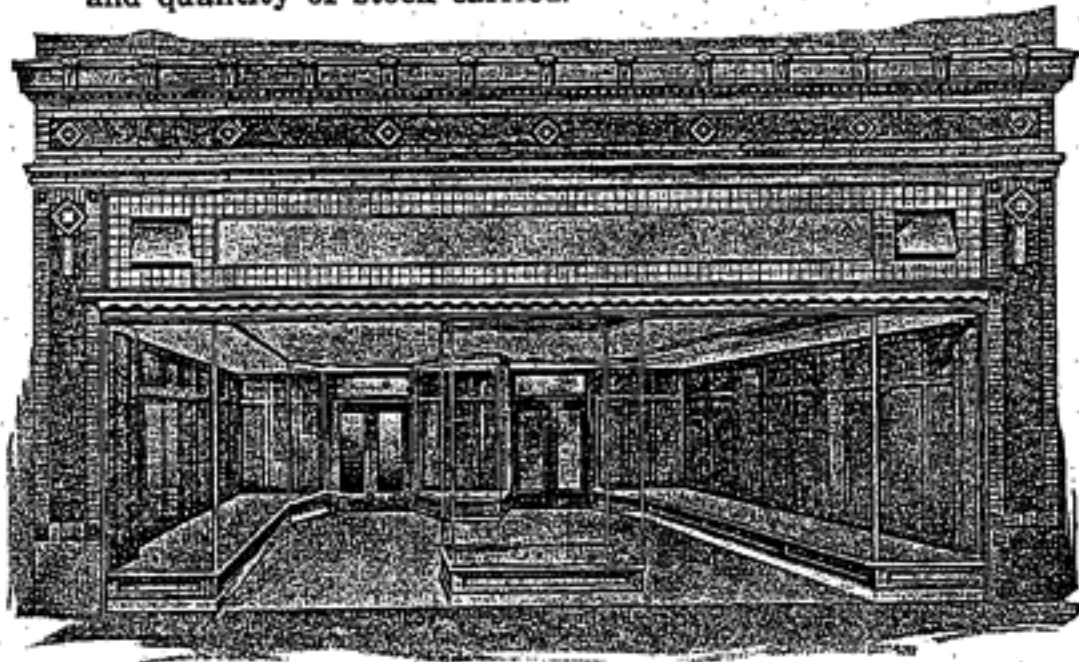
SCHEIP'S—Shoes

# Mesker Fronts Are Designed by Experts



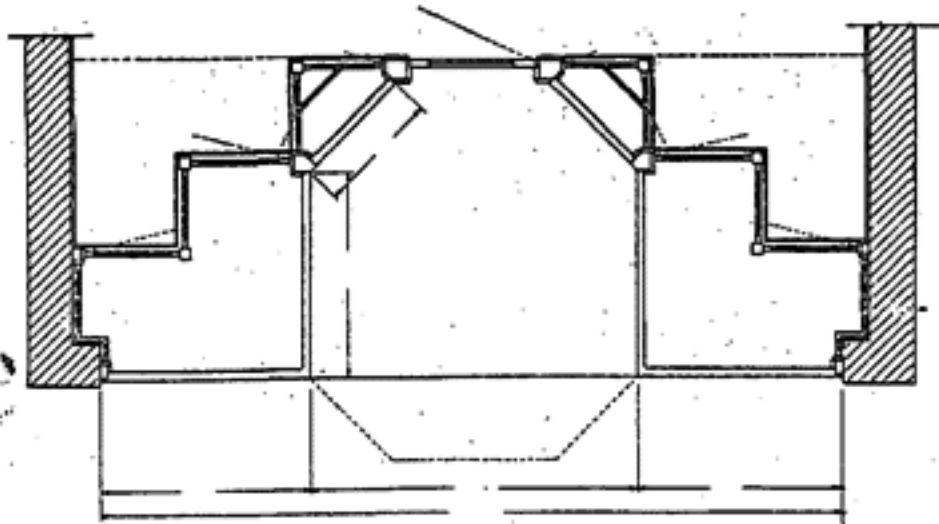
**Mesker Design No. 6**

The photograph above shows a typical arcade installation where sales volume showed a substantial increase over the old front. The street entrance on the right with its exceptional width, attracts shoppers to the extensive displays. The arcade effect further gives a very favorable impression of the store and the variety and quantity of stock carried.



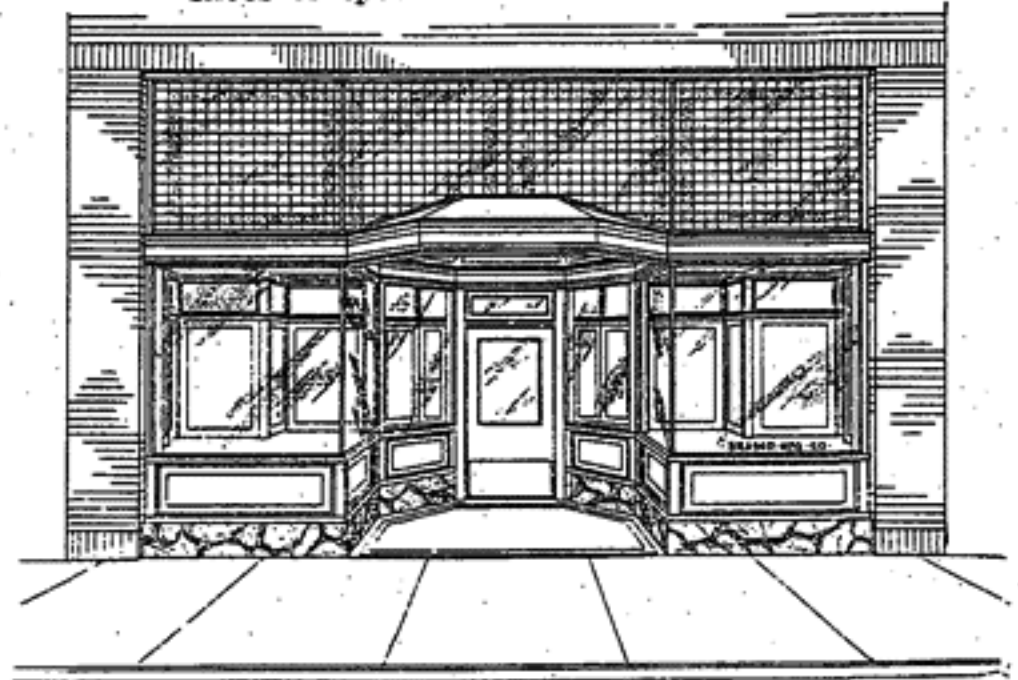
**Mesker Design No. 1**

The construction of Mesker "Island" type arcade front No. 1 is very moderate in cost and gives splendid window display on a comparatively narrow front. This design is especially adapted for women's wear and clothing, the center case often being reserved for millinery, shoes or special items.



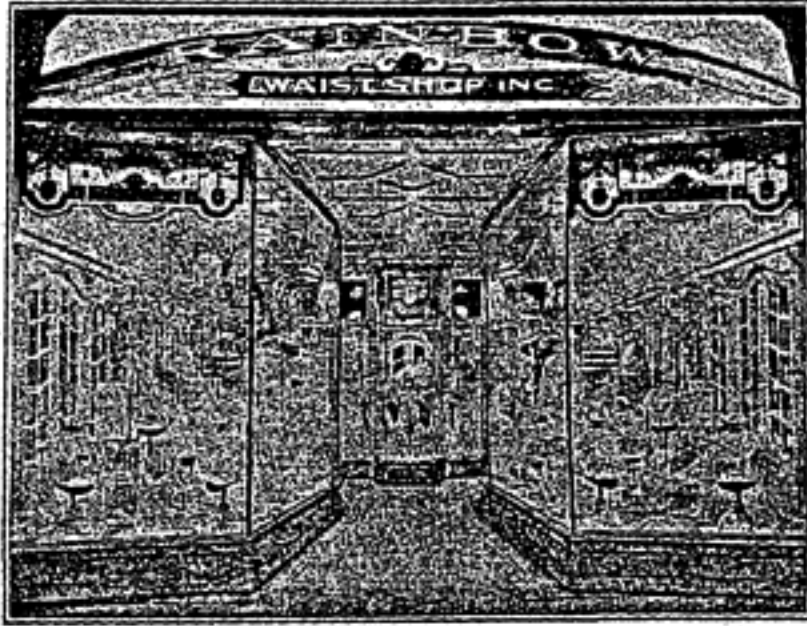
**Mesker Design No. 4**

The advantages of Mesker store front No. 4 are evident in this plan view. Liberal display space on a narrow frontage—often not over 15 feet—with the novel, attention-getting extending canopy, enables this Mesker front to help small stores do big business.





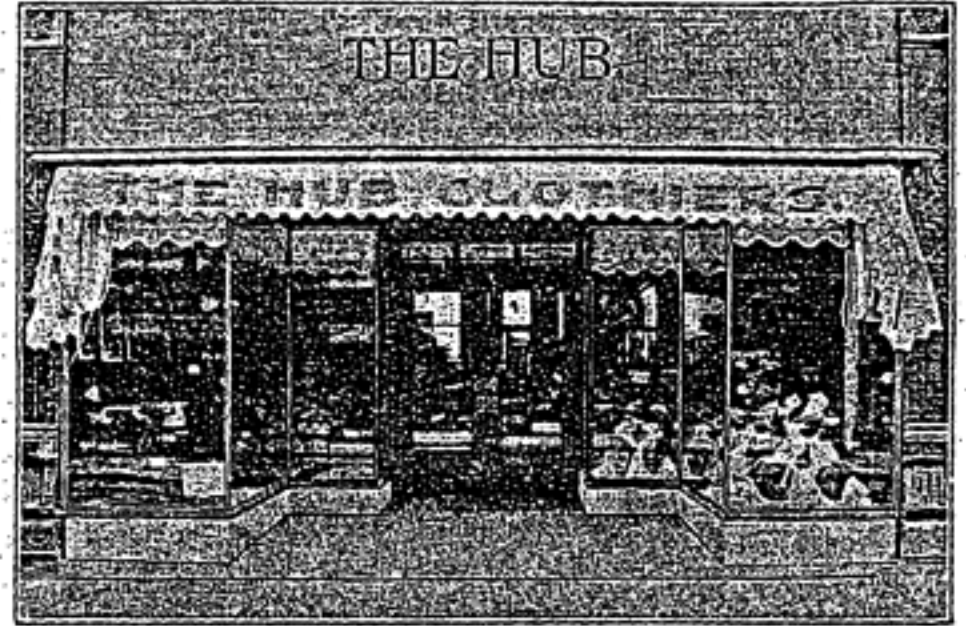
# Mesker Fronts--Large or Small--Always Excel



RAINBOW WAIST SHOP

No front is too large or too complicated for our organization.

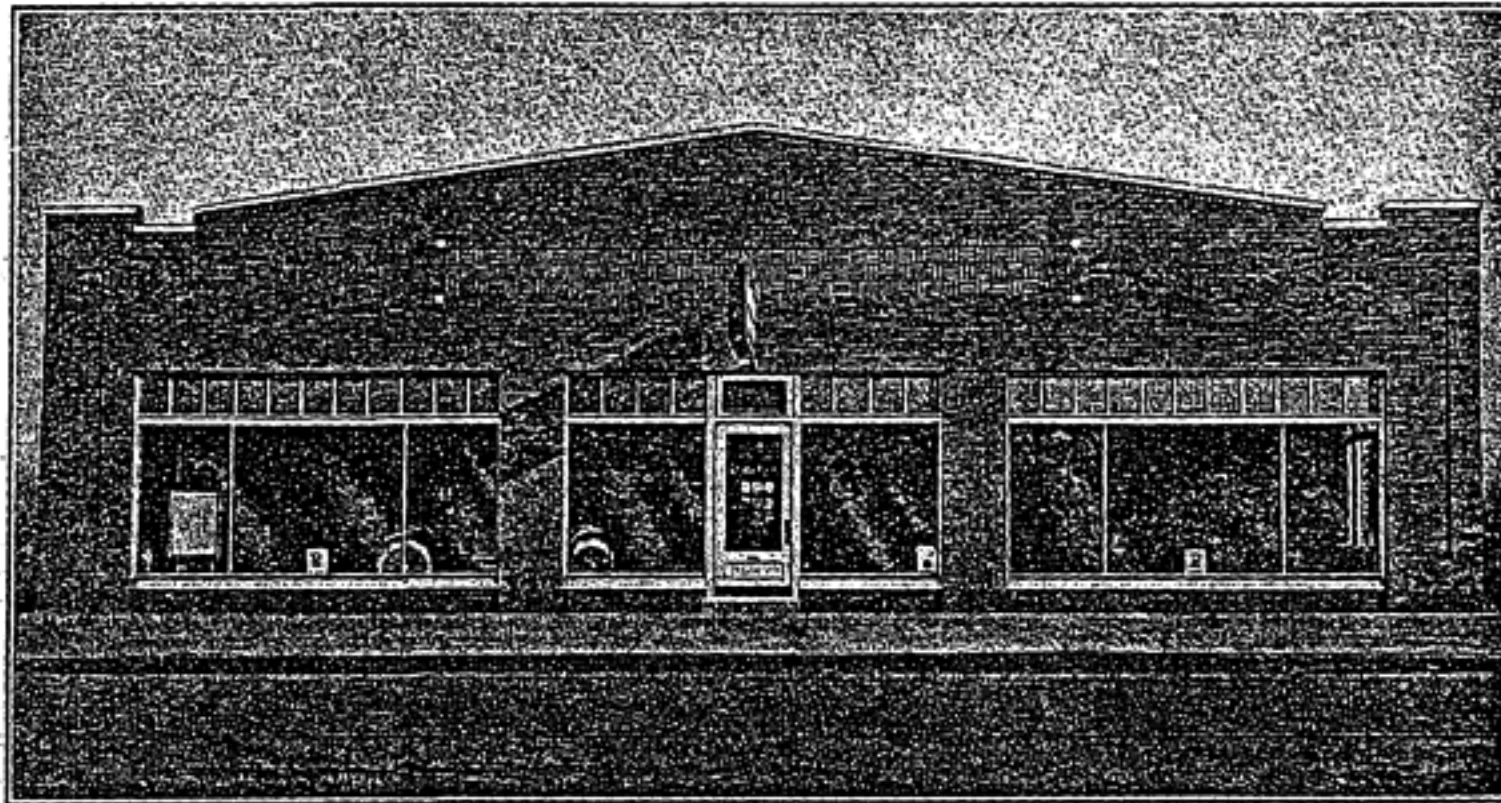
None too small to get adequate attention.



THE HUB--Men's Clothing

Every Mesker Front is designed to give 100 per cent. efficiency. Our designers analyze your particular need and plan your front to suit your business and your building. That is the reason Mesker Fronts stand out above all others.

A  
BUSINESS  
PULLING  
MESKER  
FRONT  
IS A  
PERMANENT  
IMPROVE-  
MENT  
AND  
A PAYING  
INVESTMENT



HUBER GARAGE

OLD-  
FASHIONED  
SHOW  
WINDOWS  
ARE  
EXPENSIVE

=====  
A MESKER  
FRONT  
MEANS MORE  
SALES

An appeal to the eye makes sales easy. Don't try to carry on business behind out-of-date show windows. Put in a Mesker front and pay for it out of your extra profits. Mesker fronts increase sales.

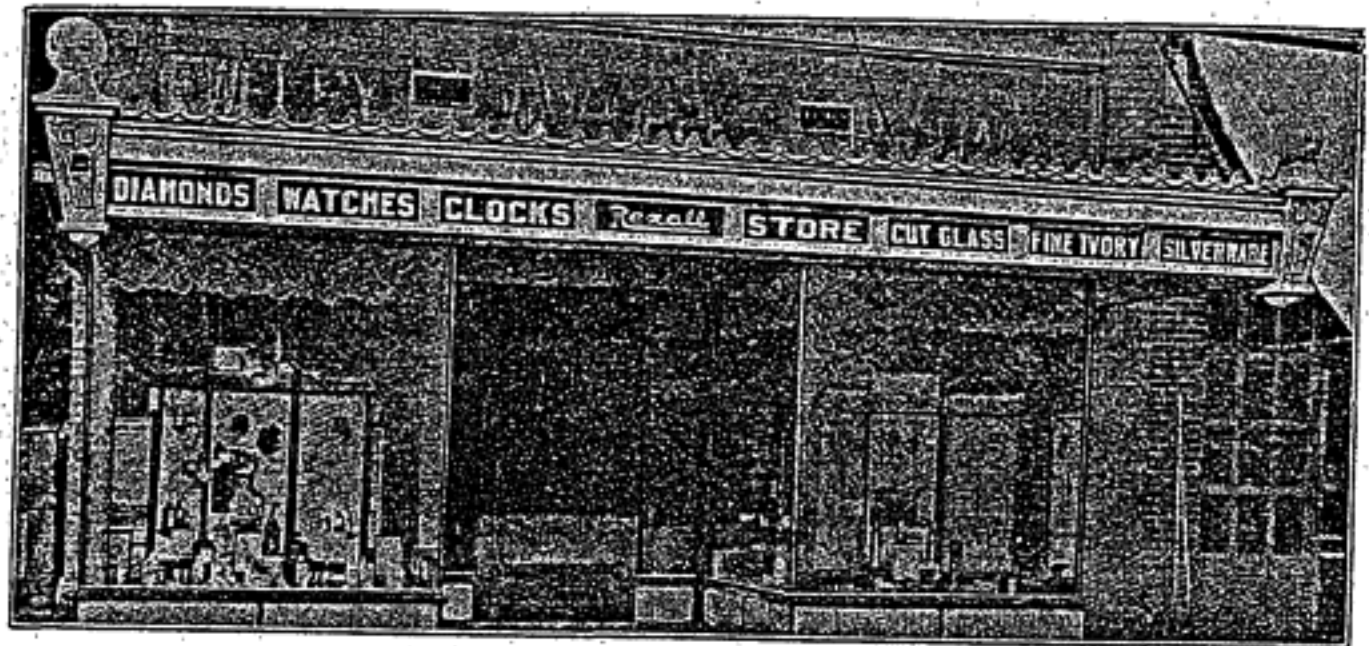


BROKHAGE--Department Store

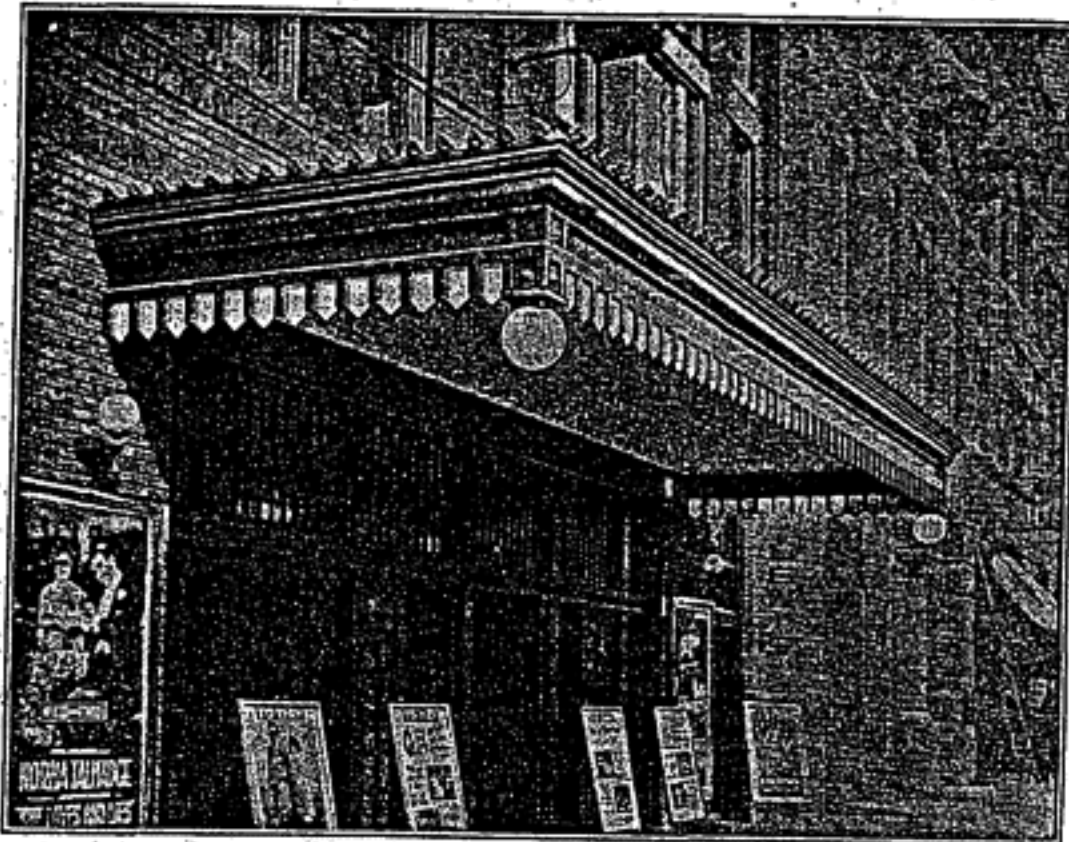


# Mesker Marquise

Merchants have been quick to see the advantages afforded by our beautiful as well as useful suspended ornamental canopies called Marquise. They provide shelter and protection the year 'round. We furnish them with glass roof so that they do not darken the show windows. A coat of paint now and then keeps a



No. 900



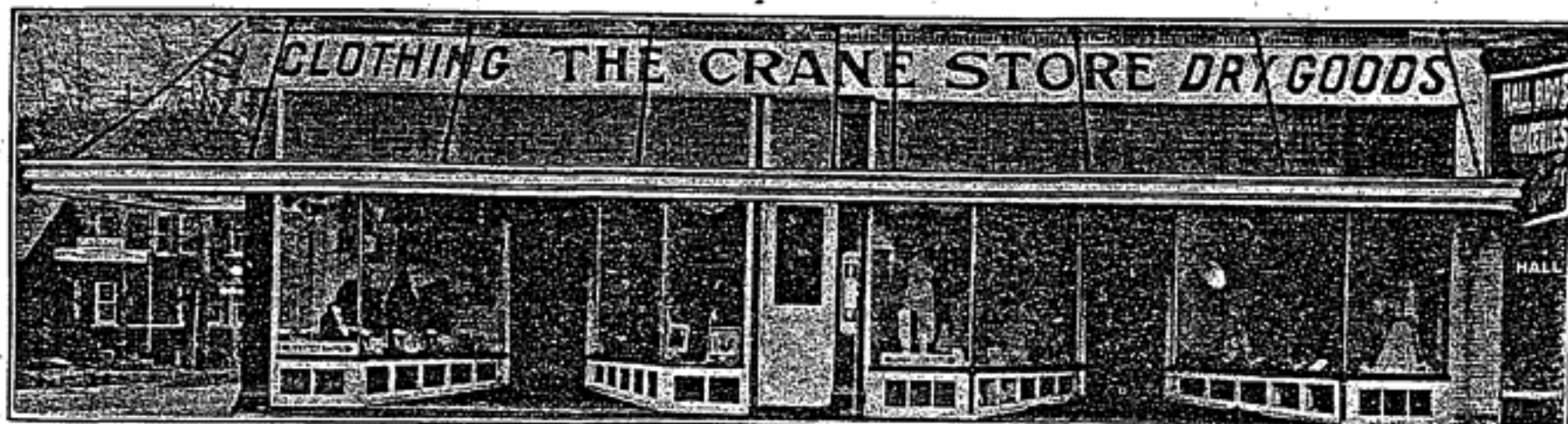
No. 905

Marquise in perfect condition. It does not become unsightly like a canvas awning, and once erected is there to stay.



ELKHART BANK

The cuts on these pages will give you an idea of the variety of design and the advertising value of MESKER MARQUISE. Send us the width of your building and the projection over the sidewalk, and we will be glad to quote you on the type required.

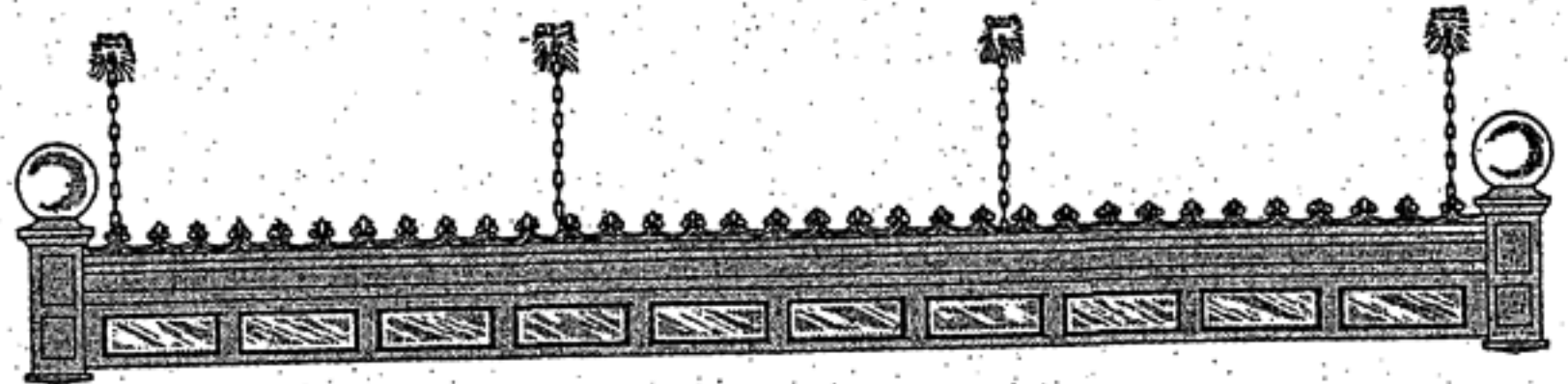
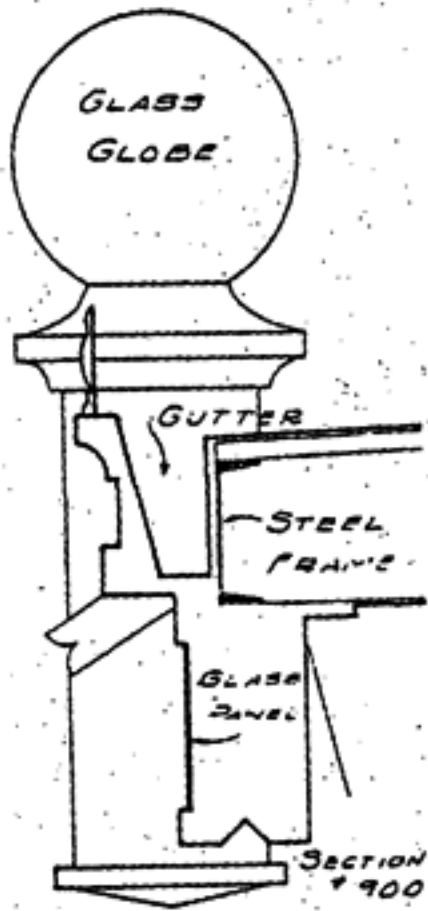


CRANE'S STORE



# Mesker Marquise

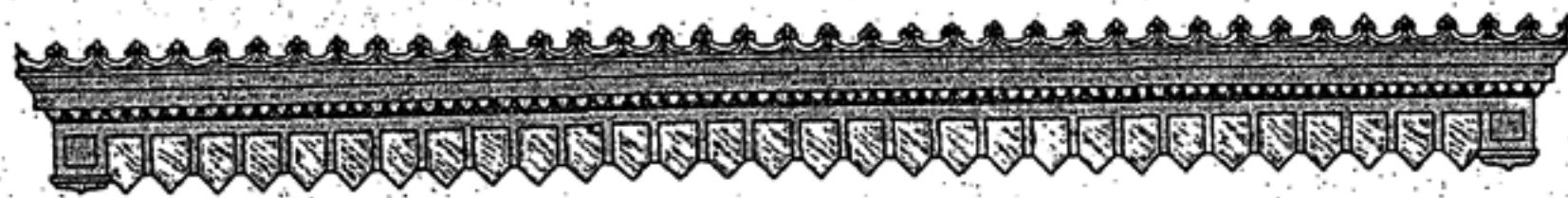
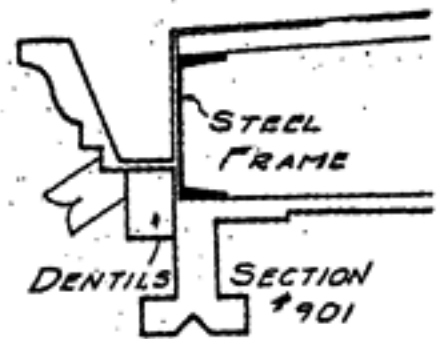
Pictures below show the appearance and details of four of our most popular designs of Mesker Marquise, from the fancy ornamental construction suitable for theatres and public buildings, to the plain and more conventional styles for garages and store building.



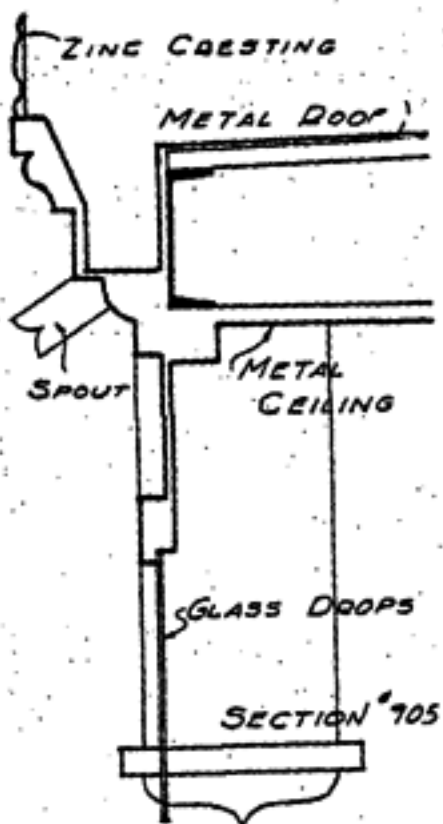
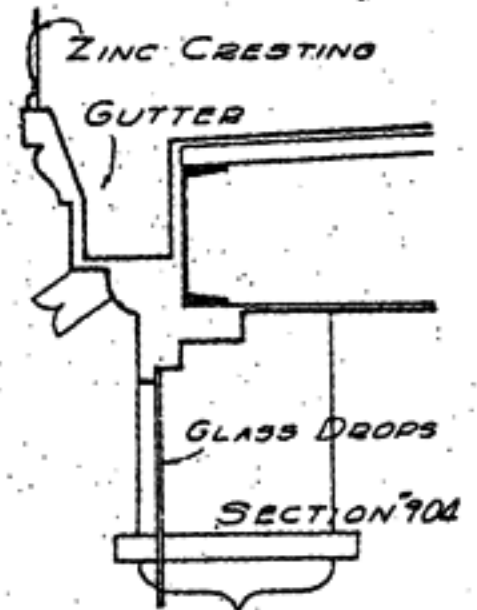
No. 900 Mesker Marquise. For the lower margin we furnish opalescent glass or ground glass panels on which signs may be painted.



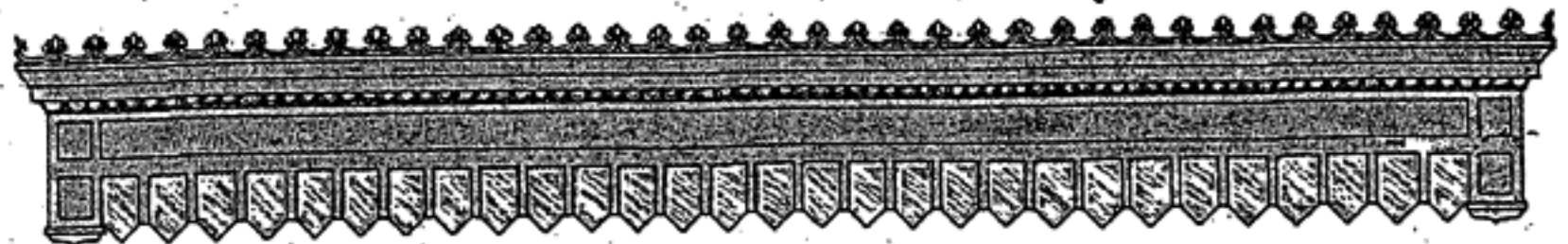
No. 901 Mesker Marquise. A very attractive moderate priced design. Recommended for store fronts especially where transom bars are low.



No. 904 Mesker Marquise. One of our popular stock patterns for over entrances, doorways and store fronts.



All styles can be furnished with heavy metal skylight frame and 1/4" ribbed wired glass roof or with metal roof and ceiling. Electric light globes can be arranged for either at top or bottom when desired.



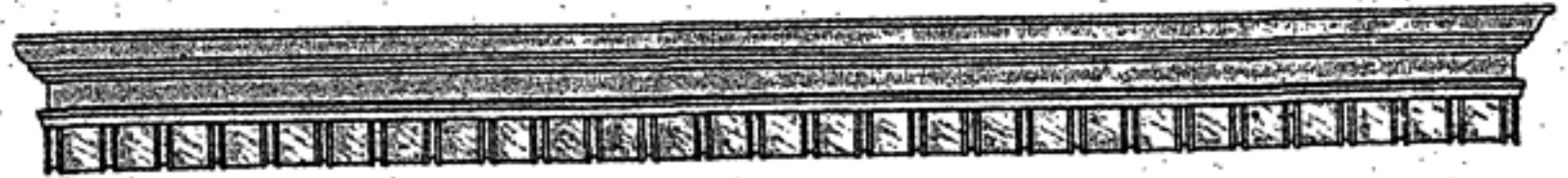
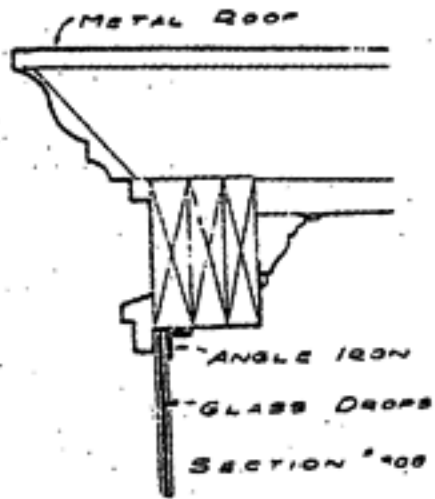
No. 905 Mesker Marquise. This style was developed for moving picture theatres, public buildings and other structures where the ornamental details will harmonize with the remainder of the building.

A Mesker Marquise is a permanent improvement to your building. It not only affords protection from the sun but also serves during bad weather. Write for details and give length and projection so we can quote.



# Mesker Marquise

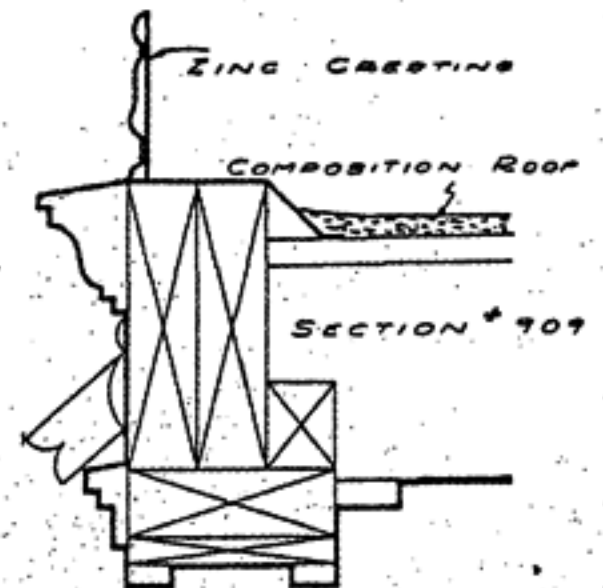
Nothing adds so much to the appearance of the front of a business or public building as an attractive and artistically designed and properly constructed suspended ornamental canopy or marquise. It affords protection from the sun and also from rain and snow. The advertising value of a Mesker Marquise is worth many times its cost.



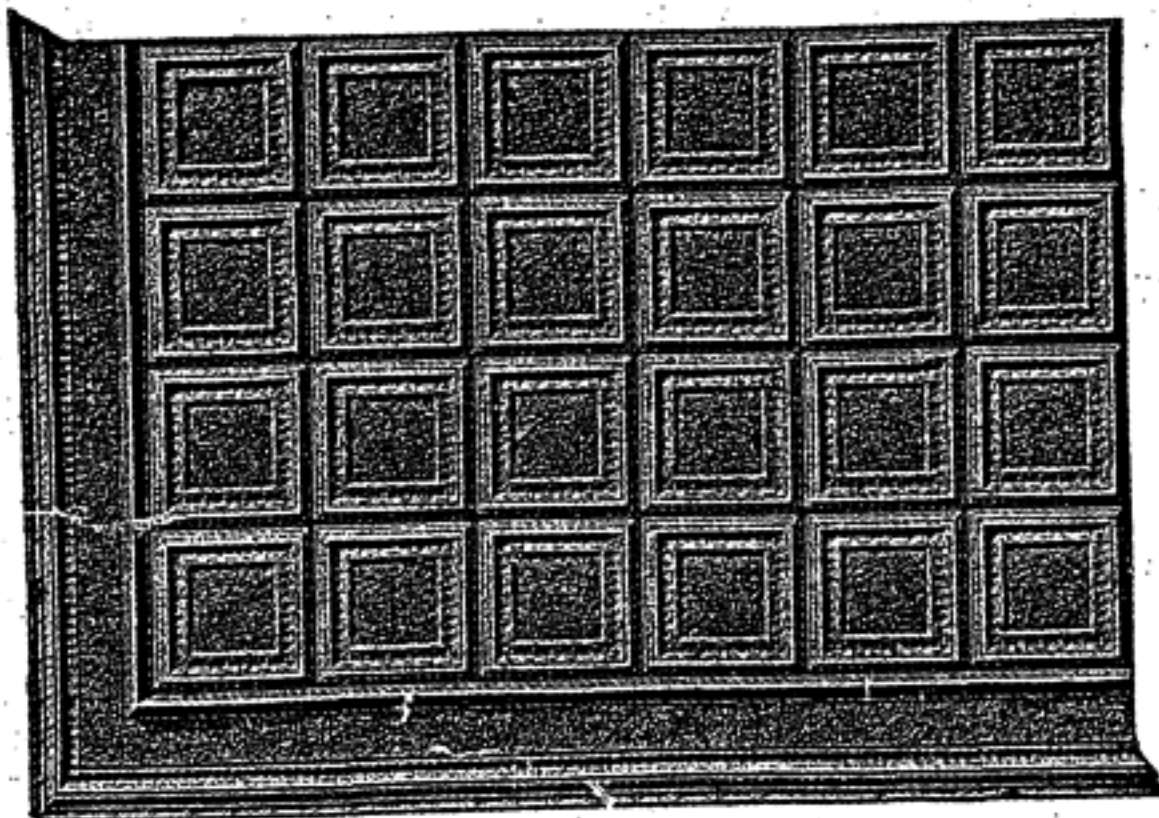
No. 908 Mesker Marquise Variegated colored opalescent glass, plate glass or ground glass panels will be furnished for lower margin as required.



These designs are arranged for wood frames and composition or metal roofs. Steel frames and  $\frac{1}{4}$ " ribbed wired glass roof can be supplied. Send dimensions for quotations.



No. 909—A beautiful yet inexpensive combination that is within the reach of every merchant, garage man or owner, combining as it does a massive appearance with low cost. Be sure to get our prices.



GREEK DESIGN No. 2435

Field Plates in This Design are  $\frac{9}{16}$  Inch Deep, 24 Inch Square.

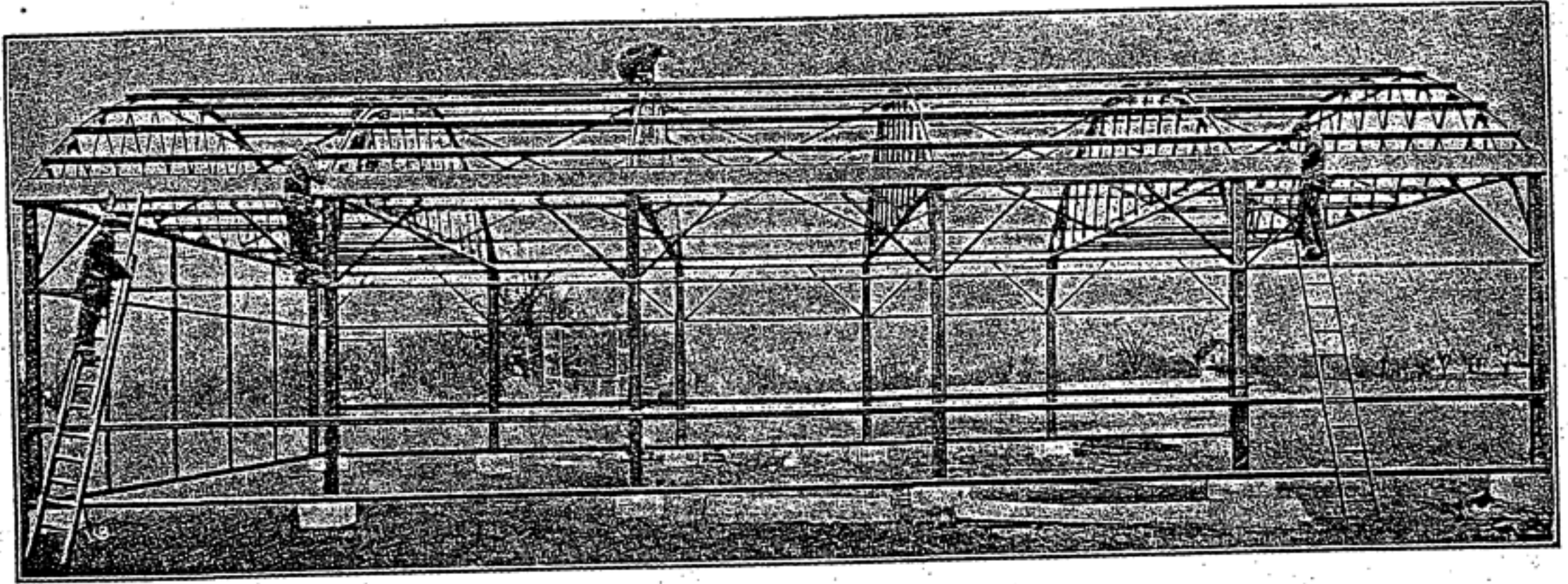
## STEEL CEILINGS

It is no longer necessary to tell why a fire-proof, handsomely embossed, everlasting metal ceiling should be used in a business building. Stamped steel ceilings are universally acknowledged as the most practical because they are the most artistic, more durable, and require less attention than any other ceiling material. Besides a steel ceiling is fireproof and will reduce your insurance rate. Our designs are adapted for every purpose.

Write for our Invisible Joint Metal Ceiling Catalog



## All Metal Airplane Hangars

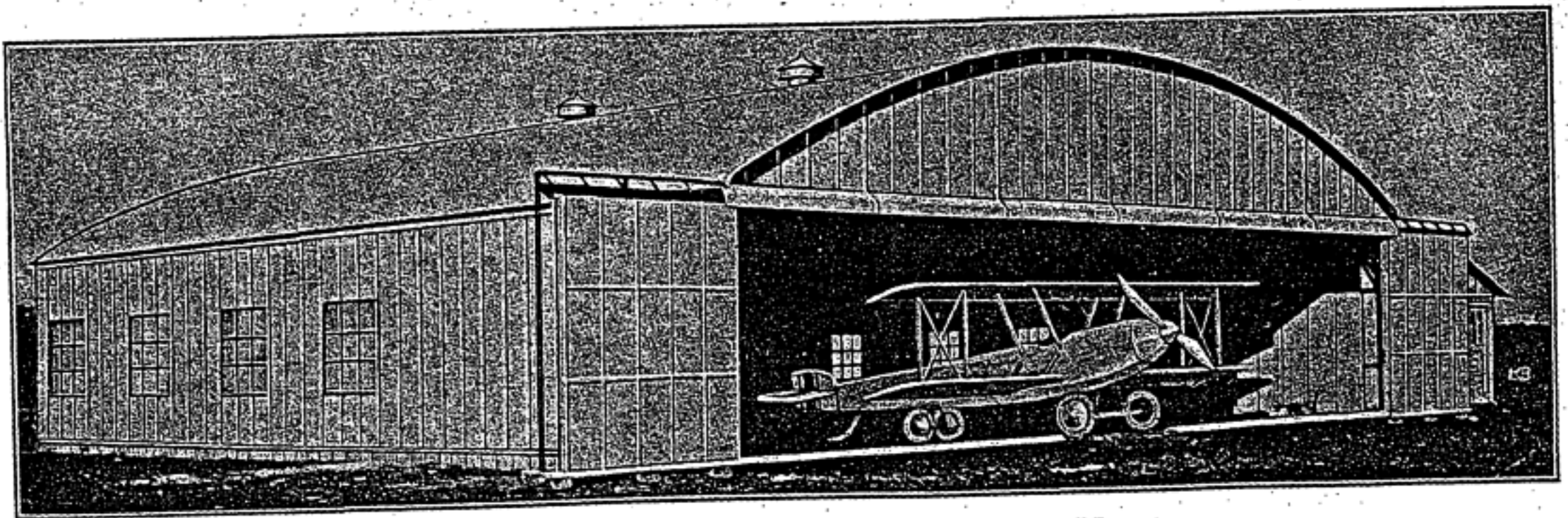


PENNCO AIRPORT, MADISON, WIS.

50 ft. by 60 ft.—Showing steel frame ready for applying galvanized sheet metal covering.

These pictures of all Metal Airplane Hangars will give you a good idea of the construction and appearance of our standard buildings. The strength of the steel structure is very evident. The sturdy columns and curved top latticed trusses, securely braced, will withstand high winds and support heavy snow loads. The designs which include our Hi-Standard Bowstring Trusses are approved by the Wisconsin Industrial Commission.

### Are Fireproof, Economical and Portable



PALWAUKEE AIRPORT, DES PLAINES, ILL.

Hangar 60 ft. by 72 feet. Steel frame with Mesker Standard Bowstring steel roof trusses, metal sliding doors, metal roofing and siding.

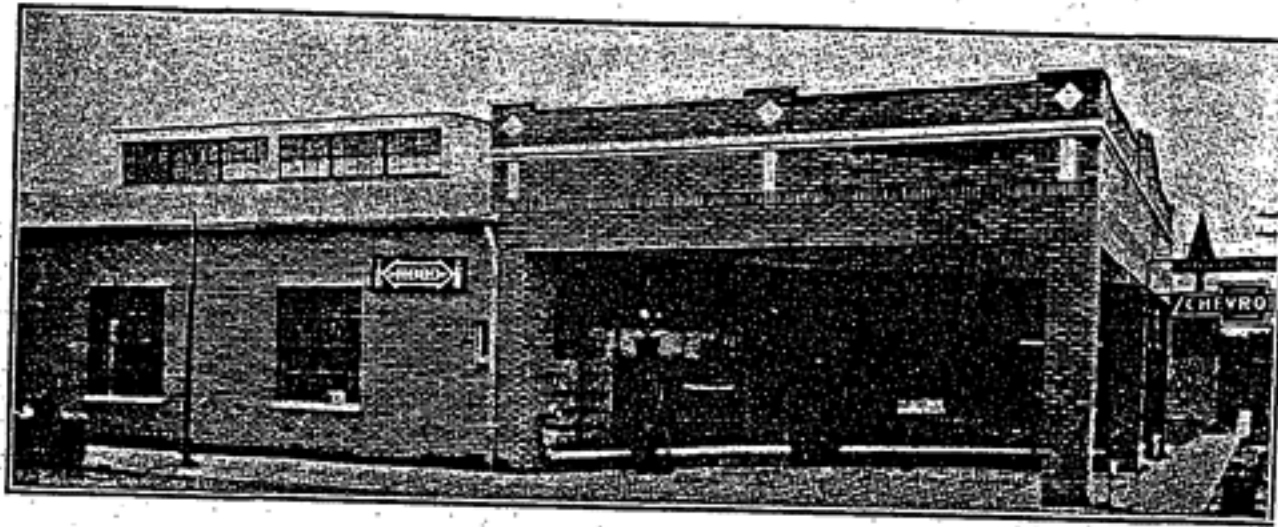
Standardization of design, materials and shop practice is the cornerstone on which the gigantic motor car business has been built.

Standardization is the keynote of Mesker designs for Airplane hangars. When you buy Mesker buildings you get the results of careful designing, quality material put together properly, at a low price. You receive maximum quality at minimum cost.

Send for circular of Standardized Hangars.



# Mesker Standard Bowstring Steel Roof Trusses

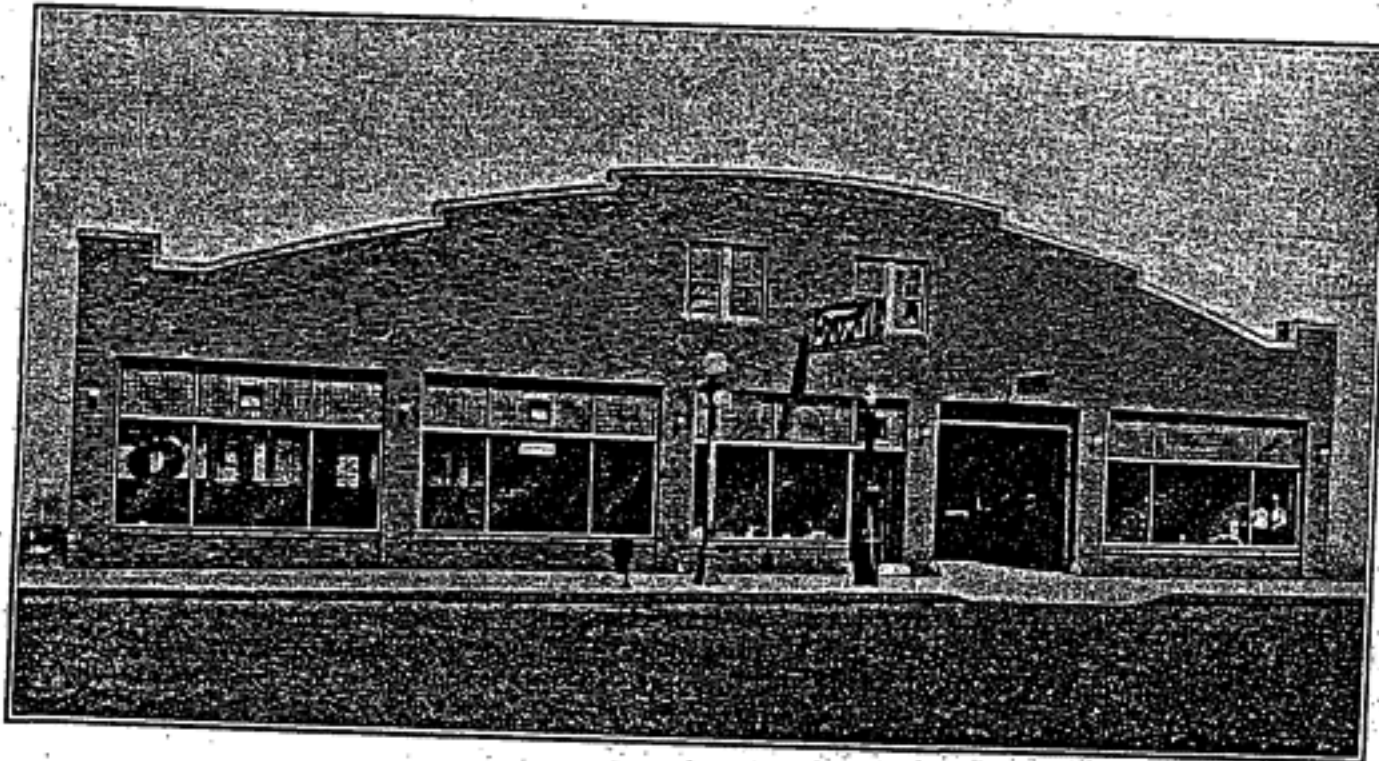


Architects specify Mesker Standard Bowstring Steel Roof Trusses because they will harmonize with any architectural design. Information and drawings showing dimensions and sizes of trusses are furnished free on receipt of data indicating the arrangement desired.

P-P. CHEVROLET CO., WINFIELD, ALA.

The curved roof looks good. Curving the roof decking, which is easily accomplished, makes the roof "solid as a rock."

Strength and Stability are the determining factors in Mesker Truss design.



Mesker Standard Bowstring Trusses are always shipped promptly.

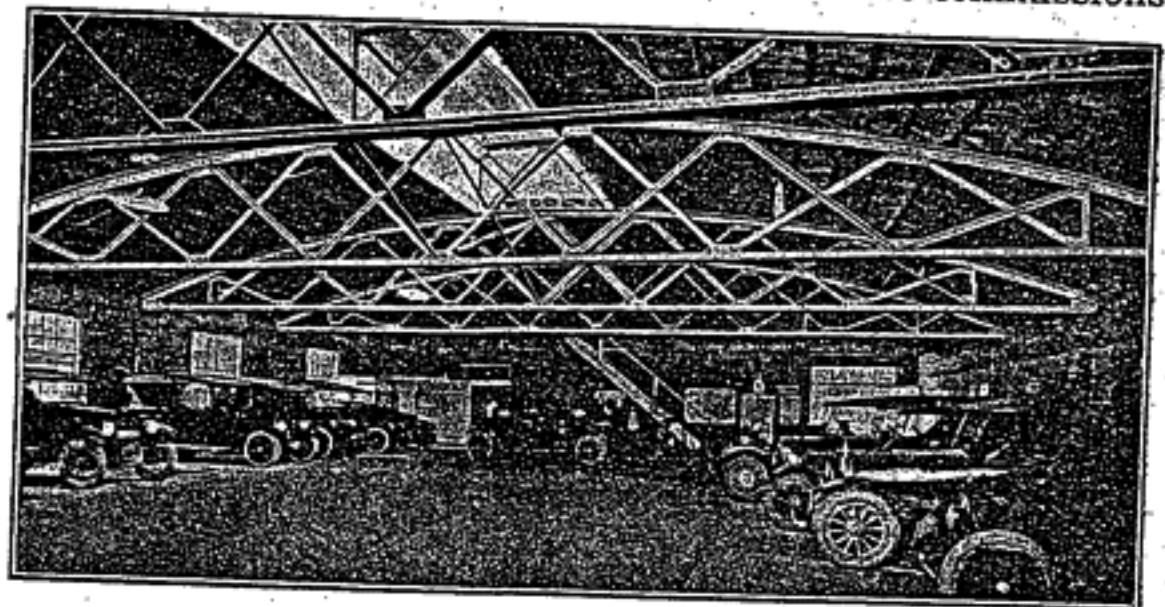
BEMIS MOTOR CO., OREGON, ILL.

Mesker Standard Bowstring Steel Roof Trusses are built in accordance with Standard Engineering practice. They are approved by the building departments of various large cities and state commissions.

The trusses made a very nice job and I am well satisfied with them.  
GEO. S. CHRYSLER,  
Belfield, N. D.

It took a couple of hours to put these trusses in place, using common labor, and everything fitted to the inch.  
TAMPA AUTO PAINTING & TRIMMING CO.,  
Tampa, Fla.

Trusses fitted fine—perfectly without a bit of trouble and am certainly well pleased with them.  
DAN J. MAHER,  
Great Falls, Mont.



INTERIOR KNOX GARAGE, BARBOURVILLE, KY.

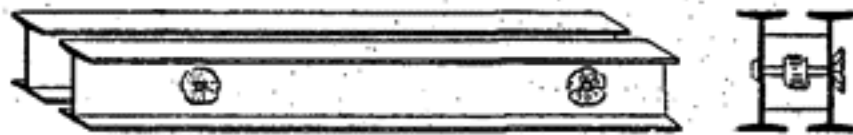
*Better Trusses for Less Money*



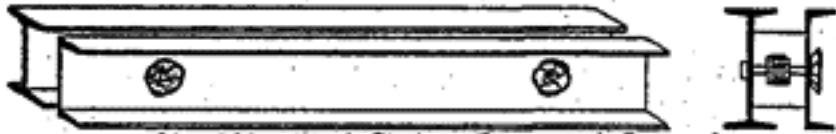
# Structural Steel Department

This department is equipped with every modern machine and convenience for handling and fabricating structural shapes. A well-assorted stock of steel beams, H columns, channels, angles and plates is carried in our Evansville yards. Prompt shipment and accurate work are assured.

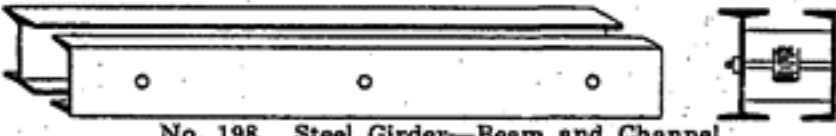
Estimates furnished promptly on receipt of plans and specifications. Our engineering department is at your service to suggest the most economical structural design and to advise you concerning special or complicated construction. Let us hear from you whenever we can be of service.



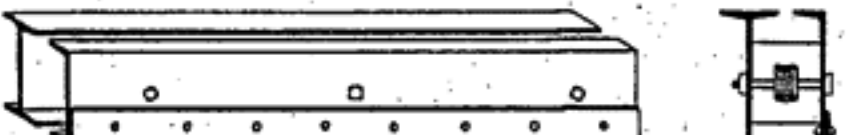
No. 197. Steel Girder—Two Steel Beams



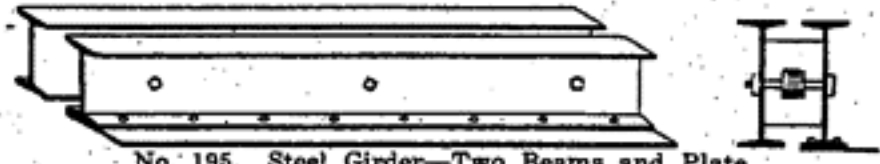
No. 199. Steel Girder—Beam and Channel



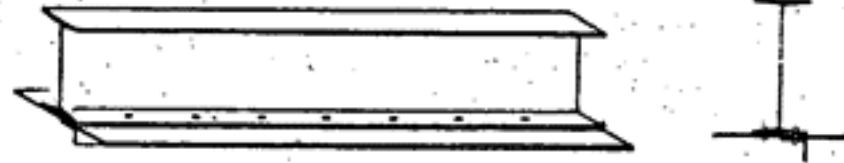
No. 198. Steel Girder—Beam and Channel



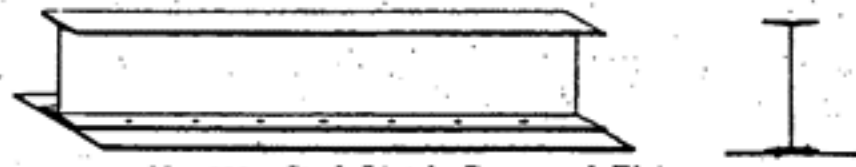
No. 194. Steel Girder—Beam, Channel and Angle



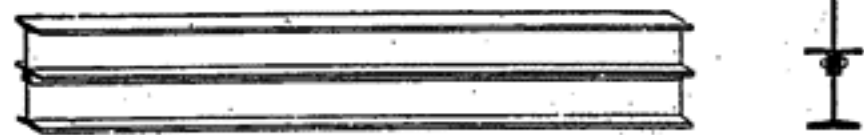
No. 195. Steel Girder—Two Beams and Plate



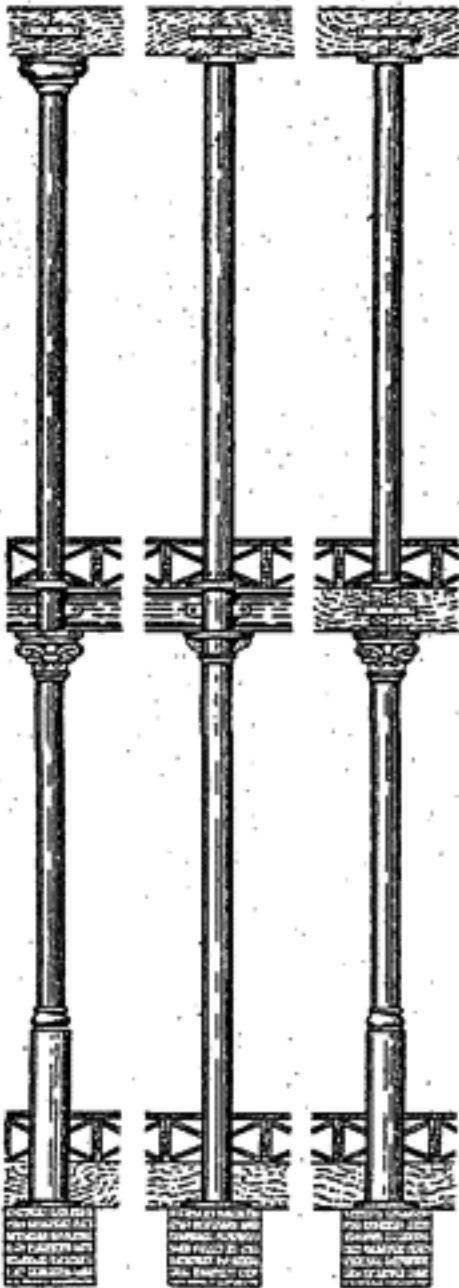
No. 193. Steel Lintel—Beam, Plate and Angle



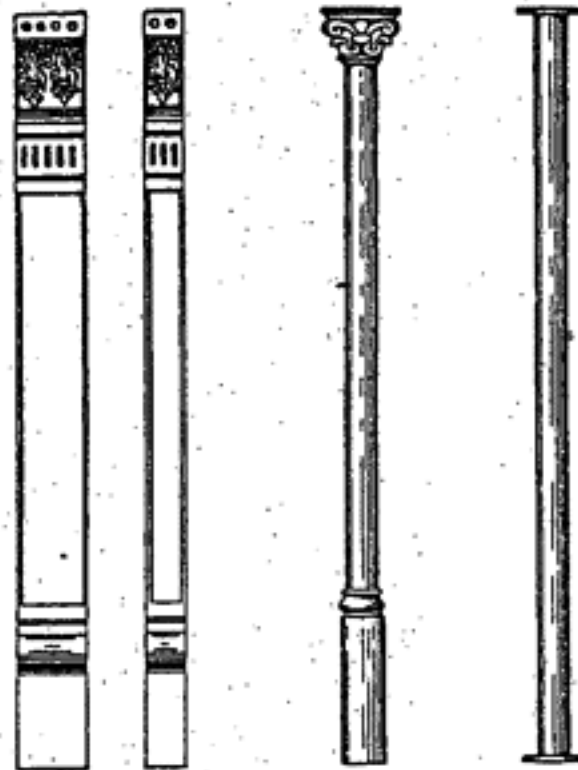
No. 196. Steel Lintel—Beam and Plate



No. 192. Steel Girder or Floor Beams



No. 320      No. 321      No. 307



No. 312      No. 304      No. 306

## Square Deformed Reinforcing Bars

Size, inches	3/8"	1/2"	5/8"	3/4"	7/8"	1"
Area, Square In.	.1406	.25	.3906	.5625	.7656	1.00
Weight, per ft., lb.	.478	.85	1.328	1.913	2.603	3.40

## CAST IRON DEPARTMENT

Mesker Cast Iron Columns excel all others in appearance, finish and strength. With a superior finish and graceful in design, they add to the attractiveness of the lower story front. Do not compare the product of our foundry with the crude designs, rough-looking, poorly finished castings that are usually furnished. Cast in one piece and of great strength, they are worth many times the price of built-up columns, which soon "rust out" and fall to pieces.

We make a complete line of architectural castings. Stock designs are most economical, but we are glad to quote on special work.

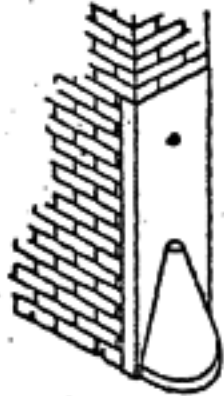
### Estimates and Engineering Service

Consult us as to the most economical arrangement of structural iron. We always recommend the use of standard stock sizes so that prompt delivery and low cost are assured. Send plans and specifications for estimate. Let us serve you.



# Cast Iron Department

We operate our own Architectural Foundry which has for many decades produced a superior grade of tough grey Iron Castings. Some of our cast iron products are shown on this page. Send for our booklet showing Mesker Cast Iron Lamp Standards. We furnish all kinds of miscellaneous building castings and will be glad to quote on receipt of particulars.



No. 335

## CAST IRON WHEEL GUARDS PROTECT YOUR BUILDING

No. 335 Jamb Wheel Guard  
2'6" high.

For 13" wall.....\$ 8.75  
For 17" wall..... 10.50

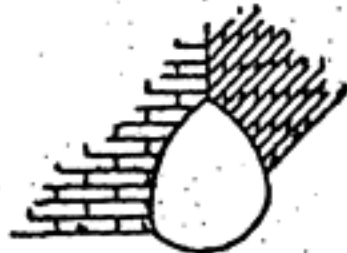
Prices include anchors.

No. 337 Corner Wheel Guard,  
14" high, 17" diameter.

Price .....\$5.25

30" high, extra heavy.

Price .....\$12.50



No. 337

## COAL HOLE RINGS AND COVERS

Made of heavy gray cast iron, suitable for use in sidewalks, over coal areas. Also used over septic tanks. Lift-ring lies flush.



No. 315 Ventilated Lid

No. 316 Solid Lid

Diam. of Lid	Diam. of Ring	Price
18"	25"	\$ 6.50
20"	27"	7.50
24"	28½"	9.50
30"	37½"	12.50

SEND FOR OUR  
CATALOG OF

**"Invisible Joint"**  
TRADE MARK

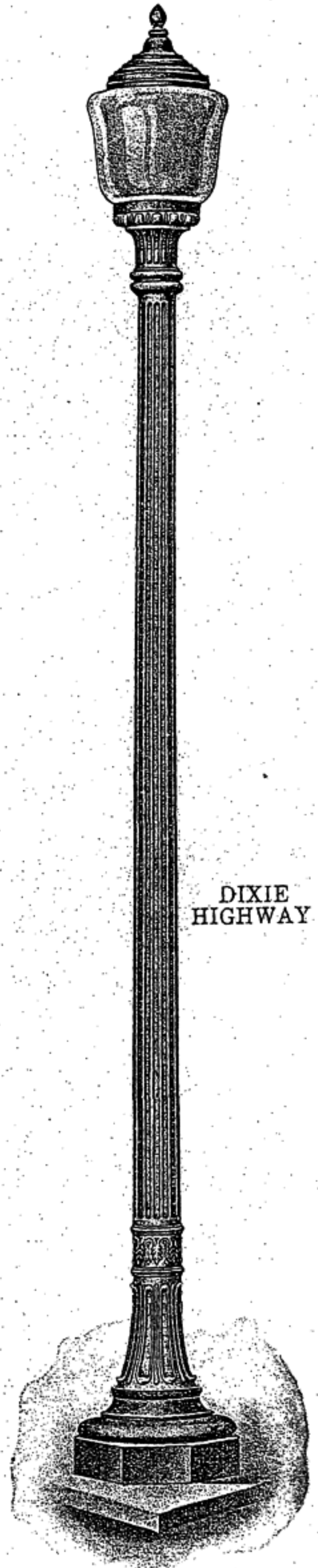
METAL CEILINGS  
MAILED FREE ON  
REQUEST

SEND  
FOR  
CATALOG  
MESKER  
CAST  
IRON  
LAMP  
STANDARDS

MESKER  
PRODUCTS  
ARE  
STANDARD  
EVERYWHERE

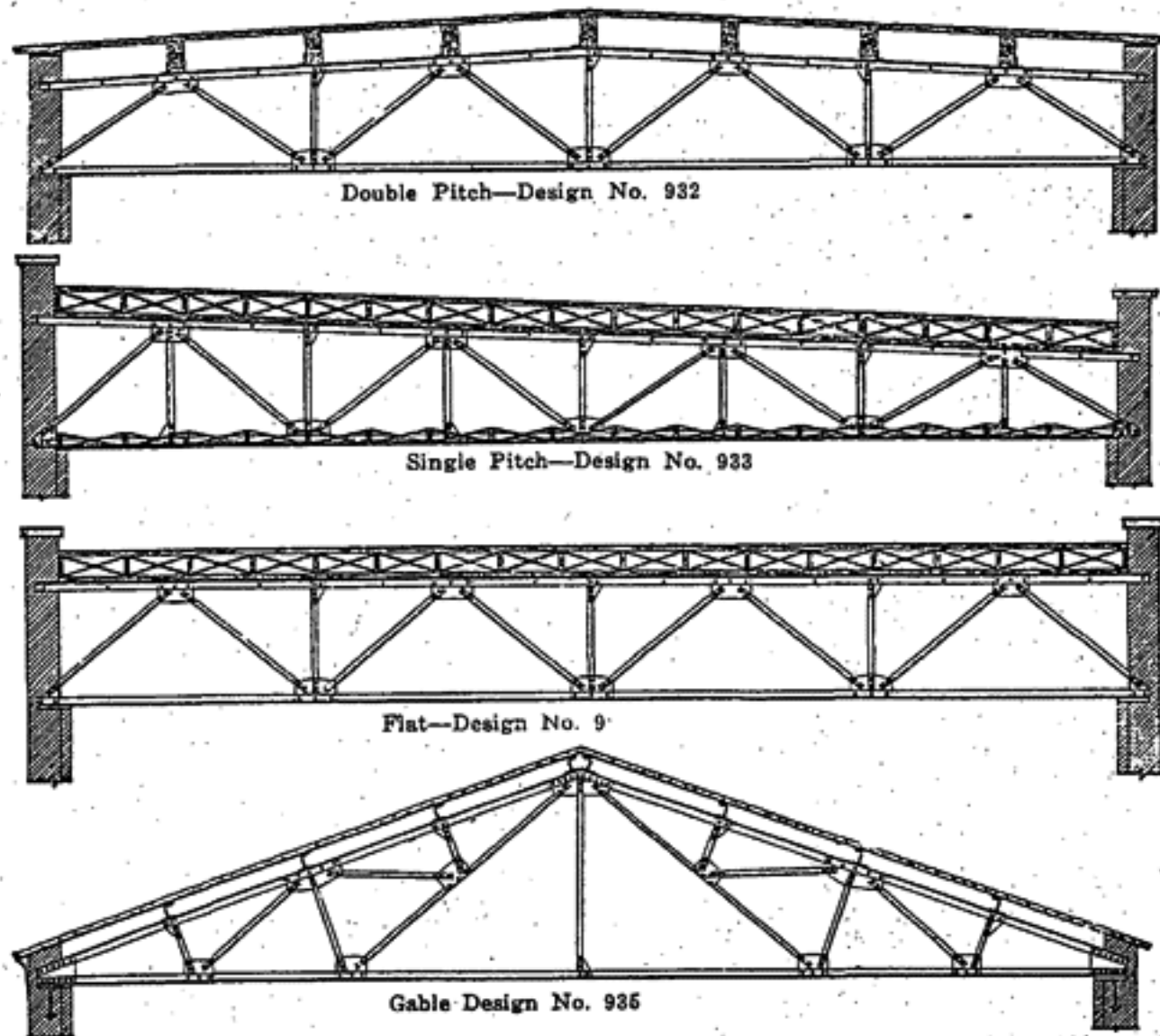
MESKER  
SERVICE  
MAKES  
NEW FRIENDS  
AND  
KEEPS  
OLD  
CUSTOMERS

DIXIE  
HIGHWAY





## Mesker Steel Roof Trusses



Steel roof trusses are preferred for garages, warehouses, factories, and auditoriums, where obstructing columns are objectionable. For all spans over 35' 0" trusses are usually cheaper than beams. They are fireproof and will not deteriorate in strength or effectiveness. For these reasons they are far superior to wood. Furthermore, steel trusses cost little, if any more than well built wood trusses. We have a large number of standard designs from which you can select the type suitable for your use. If a standard design is satisfactory this cheapens the cost. Our engineers will prepare special designs if you require an unusual arrangement.

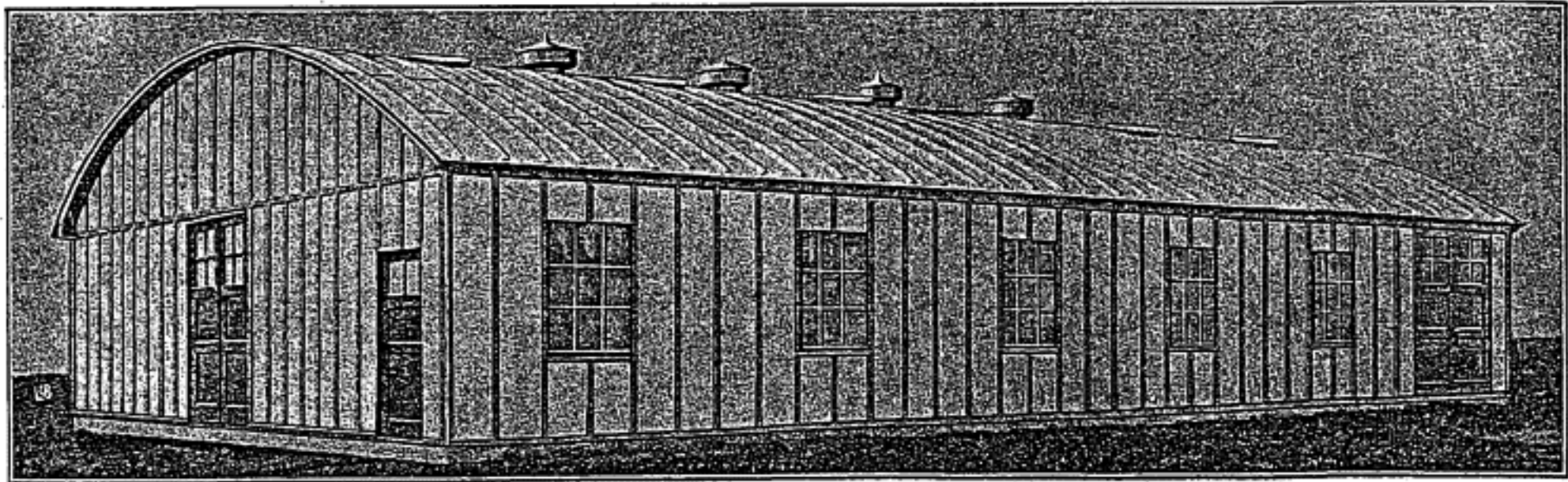
### Data Required

We will submit design and quote prices if you will give us (1) length and width of the building; (2) kind of roof, whether wood or concrete; (3) fall of roof per foot; (4) style of truss (refer to our design number); (5) state if truss must support ceiling.

### Shipment

Trusses are shipped in large sections twenty feet to forty feet long with splice plates and connections. All trusses are completely assembled before shipment so there is no chance for misfit on the job. Send us your inquiries.

## Standard All Steel Buildings



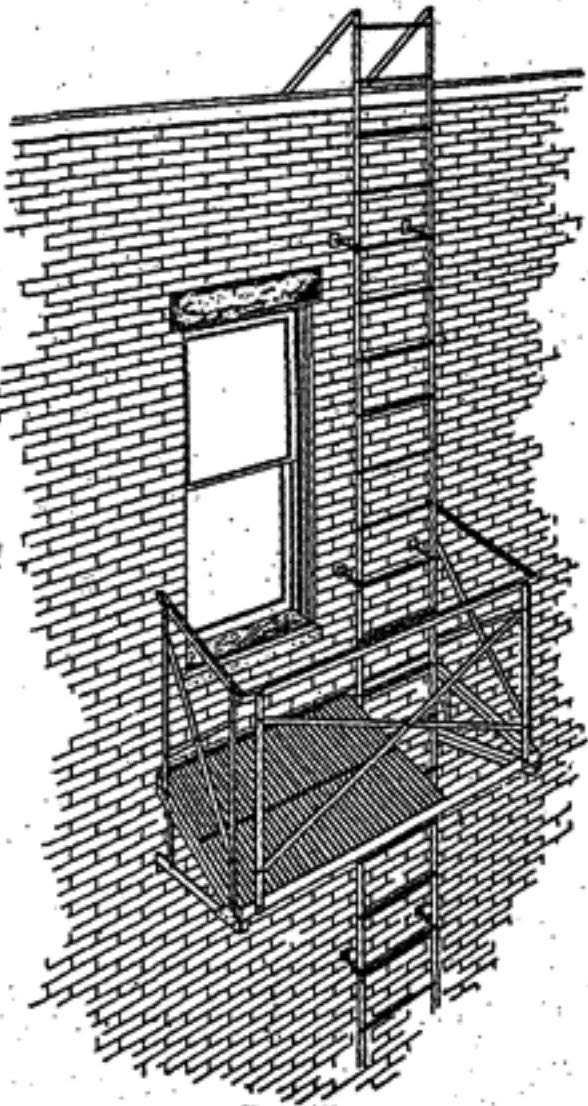
METALWARE CORPORATION, TWO RIVERS, WIS.

Warehouse 50 feet by 72 feet, with steel frame and metal roofing and siding. Hi-Standard Bow string Trusses with special type of roofing made from copper bearing galvanized steel sheets with columns and sash and girts combine to make a durable, fireproof structure at minimum cost. Such a building can be erected with common labor and can be moved at low cost. Our engineering department is at your service to suggest the most economical construction.

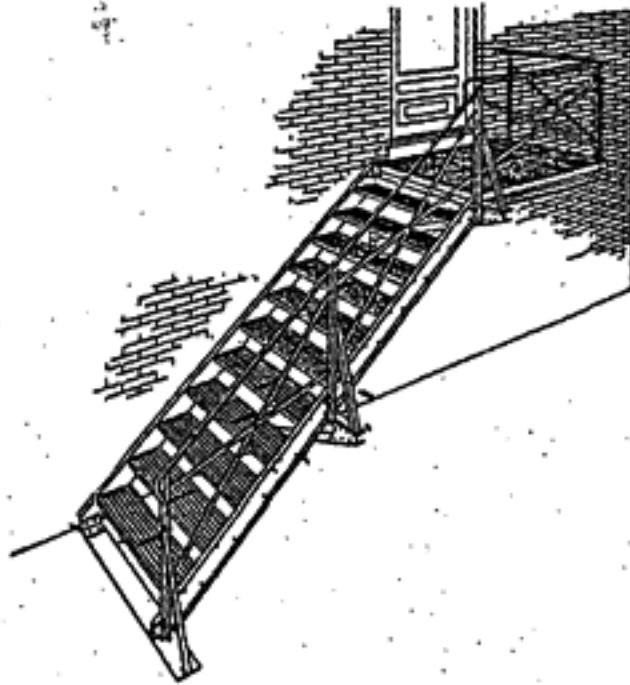


# Fire Escapes and Light Iron Work

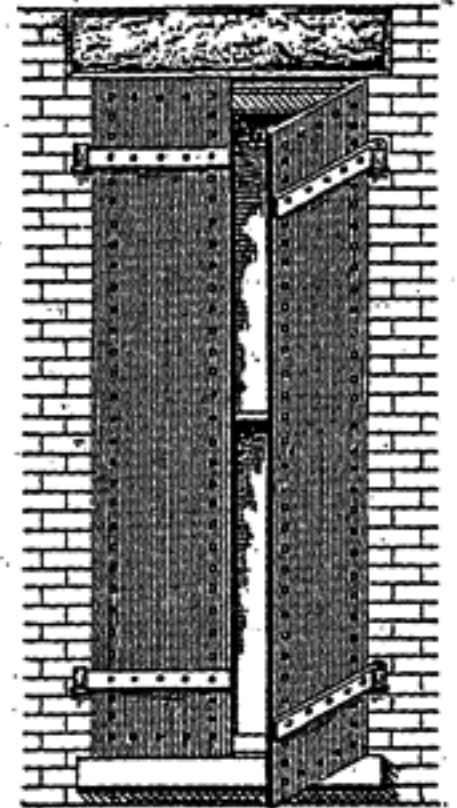
Our fire escape stairway is built to conform to state laws. It is constructed to answer every demand that may be reasonably expected. We have furnished hundreds of them for school houses, and will be glad to advise you as to the arrangements best suited to your conditions. Send measurements giving distance from ground to top of platform and width of stairway. In many cases a fire escape ladder will answer the purpose. The cost is low.



No. 957—Fire Escape



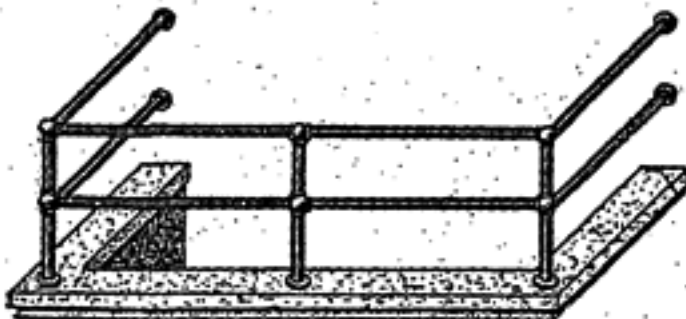
No. 967—Wrought Iron Fire Escape Stairway



No. 902

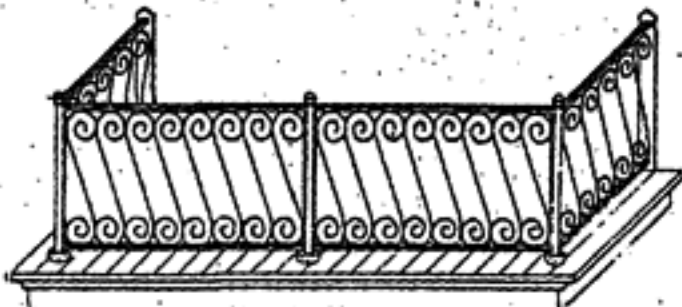
All-Steel Shutters

A protection against fire and prowlers. Furnished complete with all fixtures for new or old buildings.



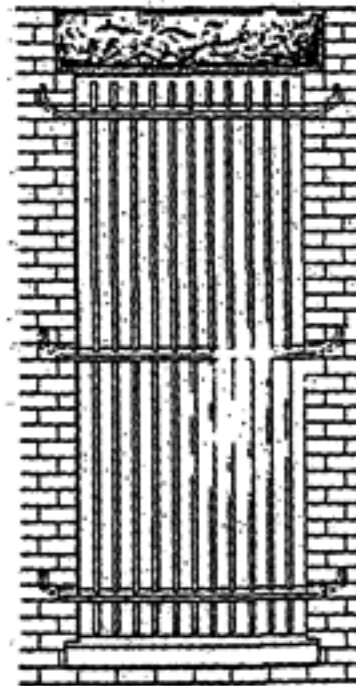
No. 917—Pipe Area Railing

We solicit your inquiries for railings, cellar doors, fire escapes and kindred light iron products.



No. 919—Ornamental Balcony Railing

Always send measurements and if possible complete plans and specifications.



No. 901

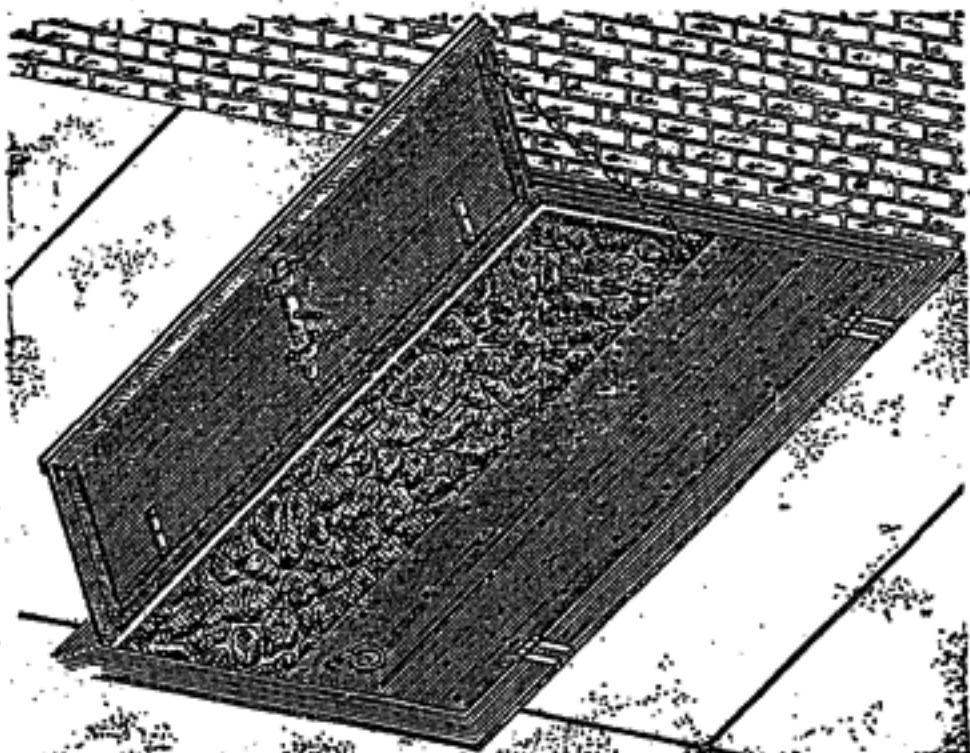
To be walled in

## WROUGHT IRON WINDOW GUARDS

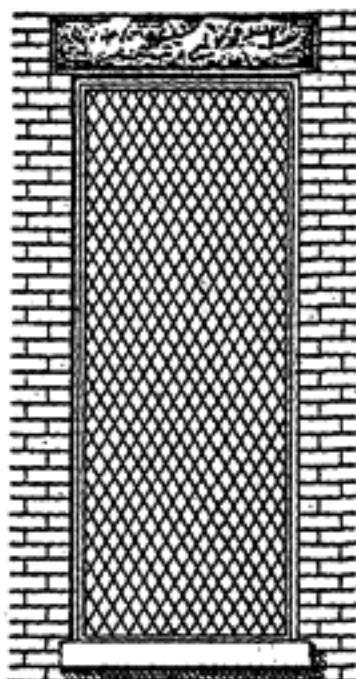
No. 903 is arranged for bolting to wood frame or jamb.

Made of 1/2" round rods 4" on centers.

Minimum size 10 sq. ft. Per sq. ft. ....\$ .50



No. 922—Iron Cellar Door and Frame



## WIRE WINDOW GUARDS

No. 10 wire, 1 1/2" mesh, 3/4" channel frame, per sq. ft.... .40

No. 10 wire, 1 1/2" mesh, 1/2" round frame, per sq. ft..... .25

No guard figured less than 10 sq. ft.

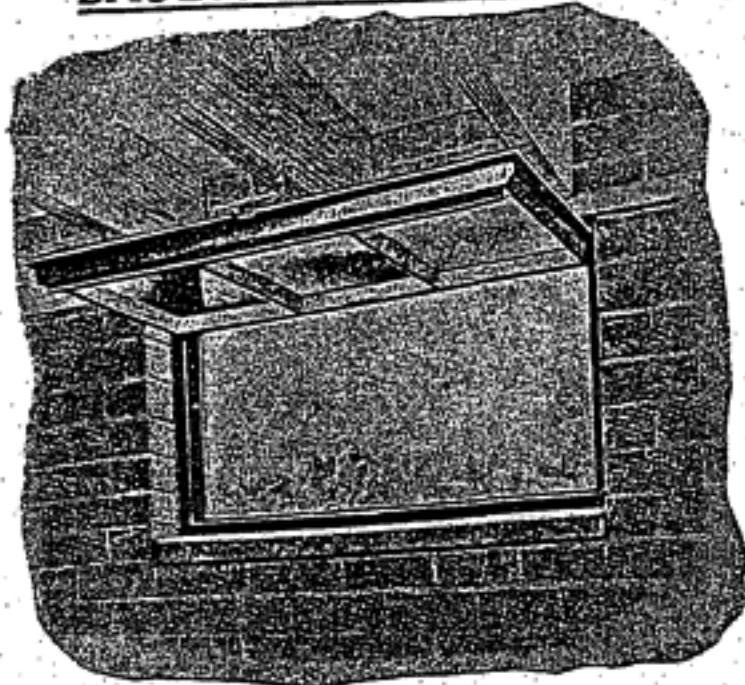


# Miscellaneous Iron and Steel Building Specialties

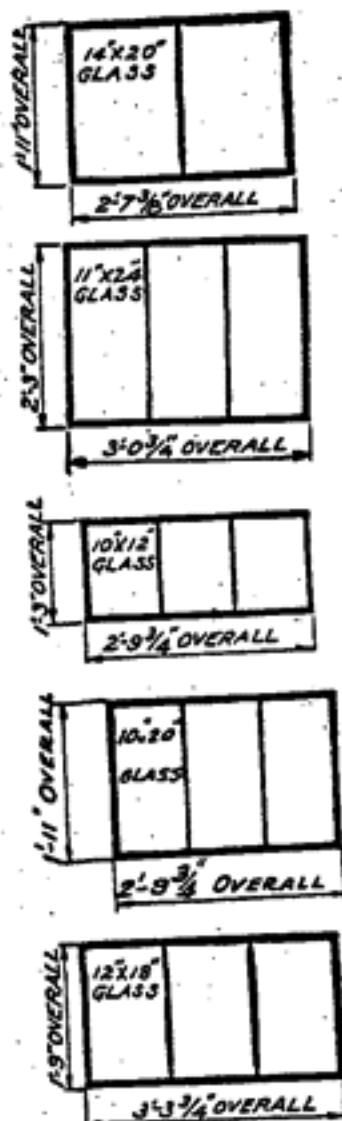
JUNE, 1928

All prices quoted are net F. O. B. cars, Evansville, Indiana.  
 Write for special prices on quantities. Special prices quoted to dealers on stock orders.  
 Prices subject to change without notice.  
 Terms—30 days, net cash to customers financially responsible. If you are sending in your first order enclose a letter from your banker or send us references as to your financial responsibility and promptness.

## Fenestra BASEMENT WINDOWS



Prices include frames and sash completely assembled with hardware attached and priming coat of paint—Glass and putty are quoted extra.



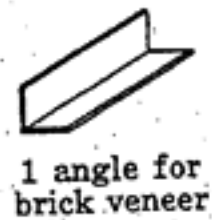
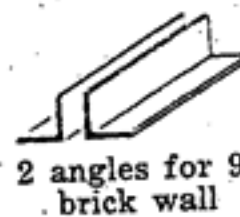
Quantity	Dimensions	Price Per Window
2 lbs.	14" x 20" 1/8" hammered glass	\$3.05
This size is adapted for use in concrete blocks.		
3 lbs.	11" x 24" 1/8" hammered glass	\$3.40
3 lbs.	10" x 12" 1/8" hammered glass	\$2.95
3 lbs.	10" x 20" 1/8" hammered glass	\$3.25
3 lbs.	12" x 18" 1/8" hammered glass	\$3.25

## STEEL ANGLE LINTELS

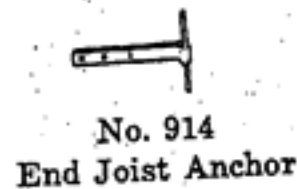
Angle irons are now in general use for lintels over window and door openings in brick or brick veneer walls. Cheaper than stone, they make a better job.

Dimensions	Price per ft.
4" x 3" Angles for openings up to 4' 0"	\$.22
4" x 4" Angles for openings up to 5' 0"	.25
5" x 4" Angles for openings up to 7' 0"	.42
6" x 4" Angles for openings up to 9' 0"	.46

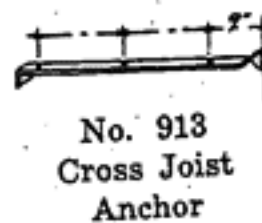
PRICES INCLUDE CUTTING TO LENGTH



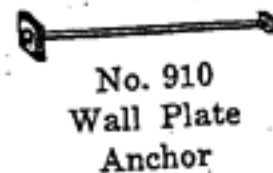
## ANCHORS



1 1/4" x 1/4" x 18", each.....\$ .22  
 With nail holes for spiking to joists. Should be used on every third joist.



1 1/4" x 1/4" x 42", each.....\$ .33  
 Made 42" long to take 3 joists 16" o. c. Space about 6' 0" apart where joists parallel walls.



5/8" x 24", each.....\$ .30  
 For anchoring wall plate. Space about 5' 0" apart.

We make a complete line of miscellaneous anchors, straps, etc. Send us your inquiries.

## SPECIAL STEEL SASH PUTTY

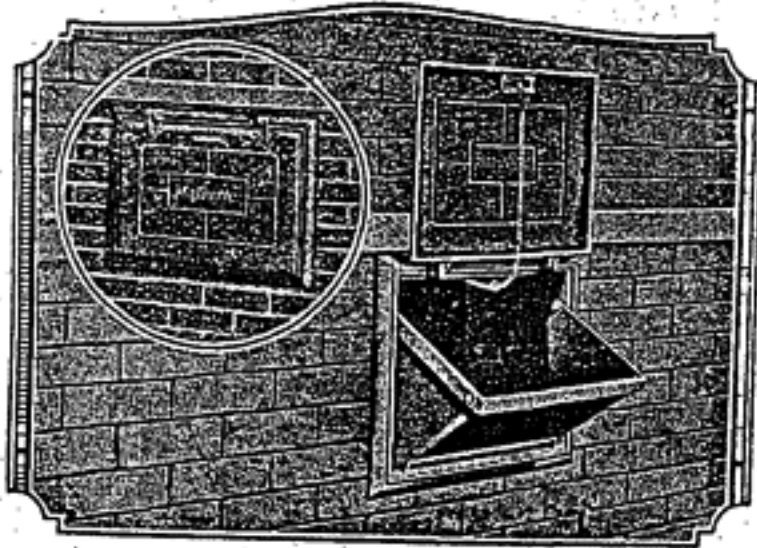
In 25 or 50 lb. cans, per lb..... 6c  
 One-half lb. required for one square foot of glass.



## Miscellaneous Metal Building Specialties

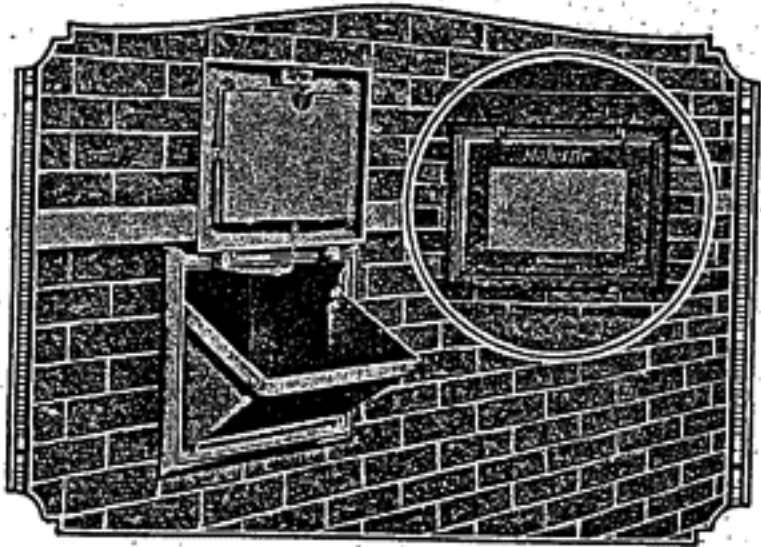
Steel is rapidly displacing wood in all classes of building construction. Metal products last longer than wood and in most cases do not cost any more.

### MAJESTIC BREAK PROOF COAL CHUTES



Nos. M101 and M203 Showing Hopper  
Size of Wall Opening

	Price	Width	Height	
M101B	\$10.00	24"	17"	Hopper
M203B	17.50	33"	22"	Hopper
M101D	8.00	24"	17"	No Hopper
M203D	16.00	33"	22"	No Hopper
M500	7.00	24"	17"	No Hopper



Nos. M10 and M20 Showing Hopper  
Size of Wall Opening

	Price	Width	Height	
M10A	\$11.00	24"	17"	Hopper
M20A	20.00	33"	22"	Hopper
M10C	10.00	24"	17"	No Hopper
M20C	18.00	33"	22"	No Hopper

All others are compared to The Majestic. Buy the best. Immediate Shipment.

### CAST IRON BASEMENT COLUMNS

Cast Columns are better. They do not rust out.

4" Diameter, 7' 0" high, each	\$12.00
5" Diameter, 7' 0" high, each	13.50
6" Diameter, 7' 0" high, each	15.00

Prices including loose top and bottom plates.

### FLITCH PLATES

(For stiffening wood girders over porches)

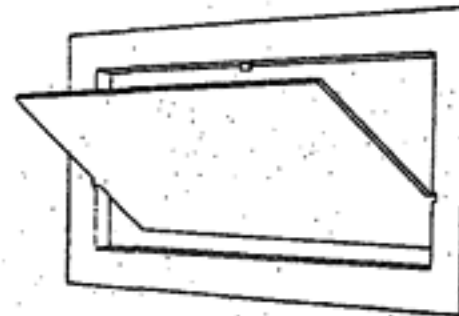
10" x 3/8", per foot	\$.55
12" x 3/8", per foot	.65
14" x 1/2", per foot	.87
As punched for 1/2" bolts, 2' 0" on center.	
4 1/2" x 1/2" machine bolts, each	\$.05

### MAJESTIC DOME DAMPERS

Built to stand the test of time and scientifically designed. No extra angle required. Easily adjusted. For fireplace satisfaction use the Majestic Dome Damper.

No.	Width Fireplace	Finished Opening	Price
26	26 inches		\$ 6.50
30	30 inches		7.00
34	34 inches		8.00
38	38 inches		8.75
42	42 inches		9.25
46	46 inches		10.00
50	50 inches		10.50
54	54 inches		11.20
60	60 inches		12.50

### ASH DUMPS

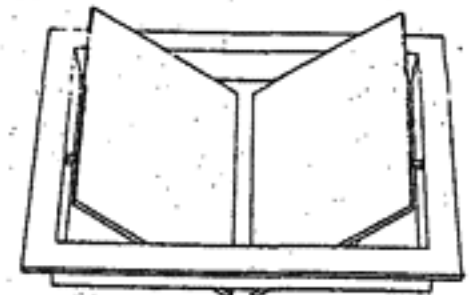


No. 10 Standard type  
over all size 8 3/4 x 7  
inches.

Price each .....\$ .80  
Price per dozen..... 8.40

No. 11 Double acting  
type, over all size  
9 3/4 x 7 inches.

Price each.....\$ .90  
Price per dozen 9.60



### CAST IRON FLUE CLEAN OUTS

	Each		Each
8" x 8"	\$1.00	12" x 15"	\$2.50
8" x 12"	1.35	16" x 20"	5.00

### CAST IRON THRESHOLDS

4 1/2" wide, 1/2" thick with screw holes per lineal  
foot .....\$1.00

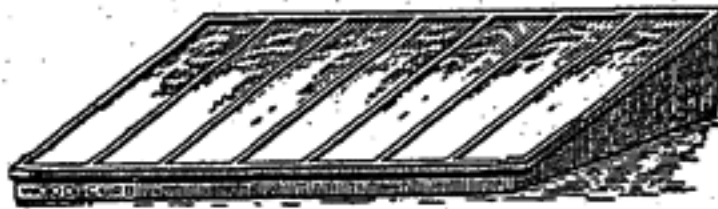
### CAST IRON AIR GRATES

8" x 16", each	\$.40
8" x 18", each	.45
10 1/2" x 20", each	.65
12" x 24", each	.80



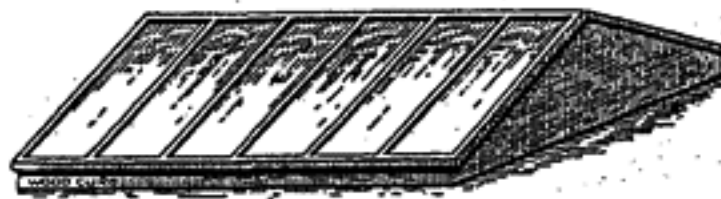
**METAL SKYLIGHTS**

Made of heavy gauge galvanized steel according to Hayes patent. Shipped set up ready to lay over opening. Glass shipped separately. No putty or wood curbs included. Sizes are over all measurements of wood curbs. Prices include 1/4" ribbed wired glass.



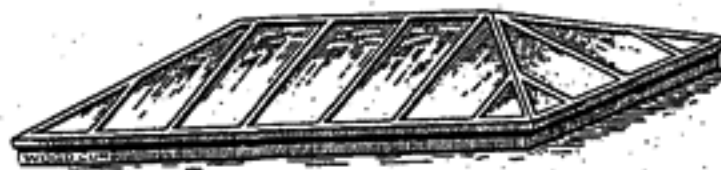
No. 148. Flat Skylight

4'0" x 4'0".....	\$12.50	6' x 6'.....	\$22.00
4'0" x 6'0".....	15.25	6' x 8'.....	28.50



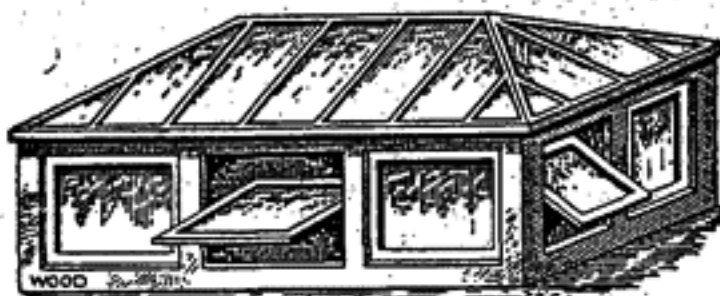
No. 149. Gable Skylight

4'0" x 4'0".....	\$19.00	6' x 6'.....	\$34.00
4'0" x 6'0".....	24.00	6' x 8'.....	43.00



No. 150. Hipped Skylight

4'0" x 6'0".....	\$32.50	6' x 8'.....	\$52.50
------------------	---------	--------------	---------



No. 151. Turret Skylight

Same as No. 150 with wood base and D. S. glass for base. No hardware or putty furnished.

4'0" x 6'0".....	\$65.00	6' x 8'.....	\$97.00
------------------	---------	--------------	---------

We make skylights of all sizes. Special low prices on quantities.

**GALVANIZED ROOF VENTILATORS**

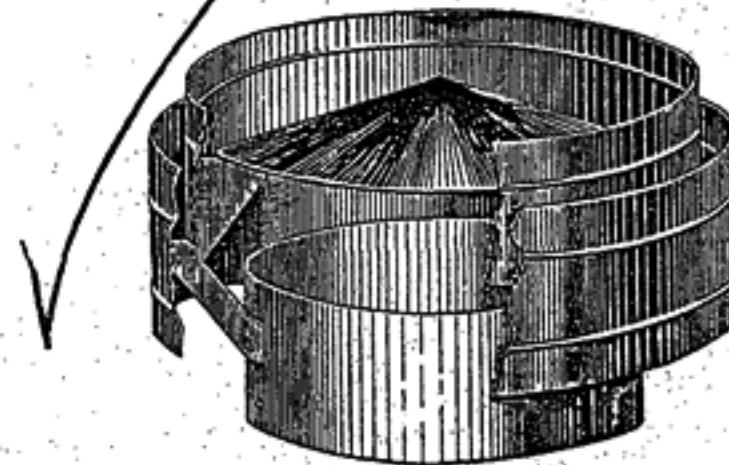
Proper ventilation is of supreme importance in garages, theatres, factories, community halls and similar buildings. Mesker Roof Ventilators are designed for maximum air exhaust and can be provided with dampers when desired. They are worth many times their cost.

Our vents are made of heavy gauge galvanized steel, securely soldered and riveted. They are shipped completely set up ready to place on roof. When ordering give pitch of roof and state if set on ridge or not.

	Each		Each
12" Diam.....	\$10.50	20" Diam.....	\$16.75
18" Diam.....	15.00	24" Diam.....	17.50

Dampers \$1.00 per vent extra.

All prices are net F. O. B. Evansville, Ind.



No. 256. Roof Ventilator

Write us for prices on all kinds of architectural sheet metal work such as cornices, skylights, roof ventilators, marquise, metal ceiling, etc.

Special prices will be quoted on quantities. Your inquiries will receive prompt attention. Your orders will be shipped without delay.

**SEND FOR CATALOGS**

We issue catalogs to cover our complete line. Copies will be mailed free on request.

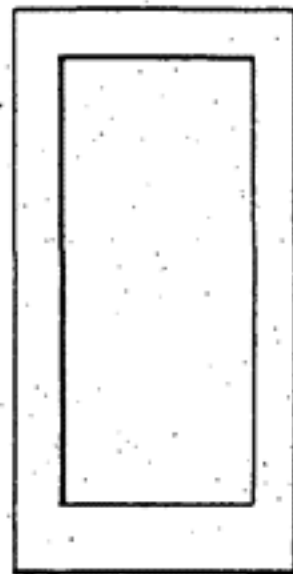
- Mesker Bowstring Steel Roof Trusses.
- Mesker All Steel Airplane Hangars.
- Steel Ceiling.
- Fenestra Steel Sash—Architectural, Industrial, Residential.
- Mesker Cast Iron Lamp Standards.
- Brasco Copper Setting.
- Fire Doors—Tin-clad and Kalamein.



# Metal Doors and Windows

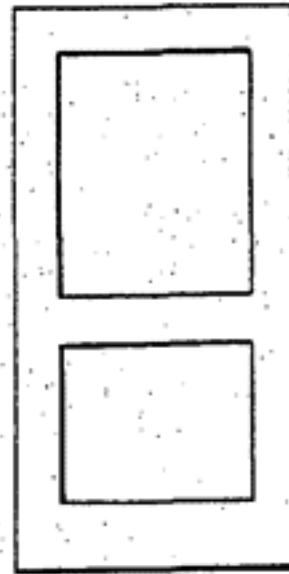
## For Fire Protection and Durability

Kalamein doors 1 1/4" thick have wood cores covered with heavy gauge galvanized iron with all seams soldered and ground off close. All moldings, muntins, and stops are mitered to fit neatly. They have one coat of gray priming paint. Made in large quantities in certain standard types which are shown below, all for openings 3'0" x 7'0". (Doors measure 2' 11 1/8" x 6' 11 1/8" enable us to quote such low prices.)



**R-1**  
One Solid Panel.  
Price .....\$15.00  
Jamb 5 1/2" wide.  
Price .....\$6.75  
Plain Trim, one side.  
Price .....\$4.50

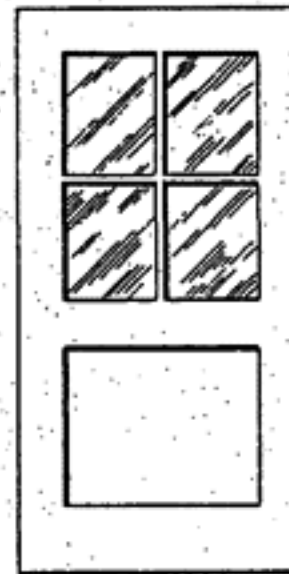
R-1



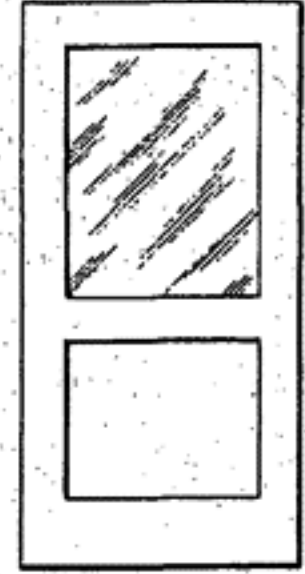
R-2

**R-2**  
Two Solid Panels.  
Price .....\$16.50  
Jamb 5 1/2" wide.  
Price .....\$6.75  
Plain Casings, one side.  
Price .....\$4.50

**G-32**  
One Solid Panel, 4 Glass Panels.  
Price .....\$19.00  
Jamb 5 1/2" wide.  
Price .....\$6.75  
Plain Casings, one side.  
Price .....\$4.50  
No glass included.



G-32



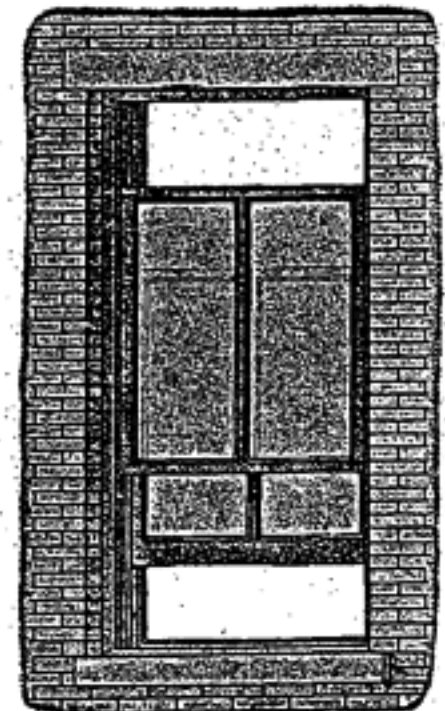
**G-2**  
One Solid Panel, One Glass Panel.  
Price .....\$15.50  
Jamb 5 1/2" wide.  
Price .....\$6.75  
Plain Casings, one side.  
Price .....\$4.50  
No glass included.

G-2

These kalamein doors are carried in stock. They do not bear the Underwriters label. Send list for price on special sizes and for prices on labeled doors.

## FIREPROOF HOLLOW METAL WINDOWS

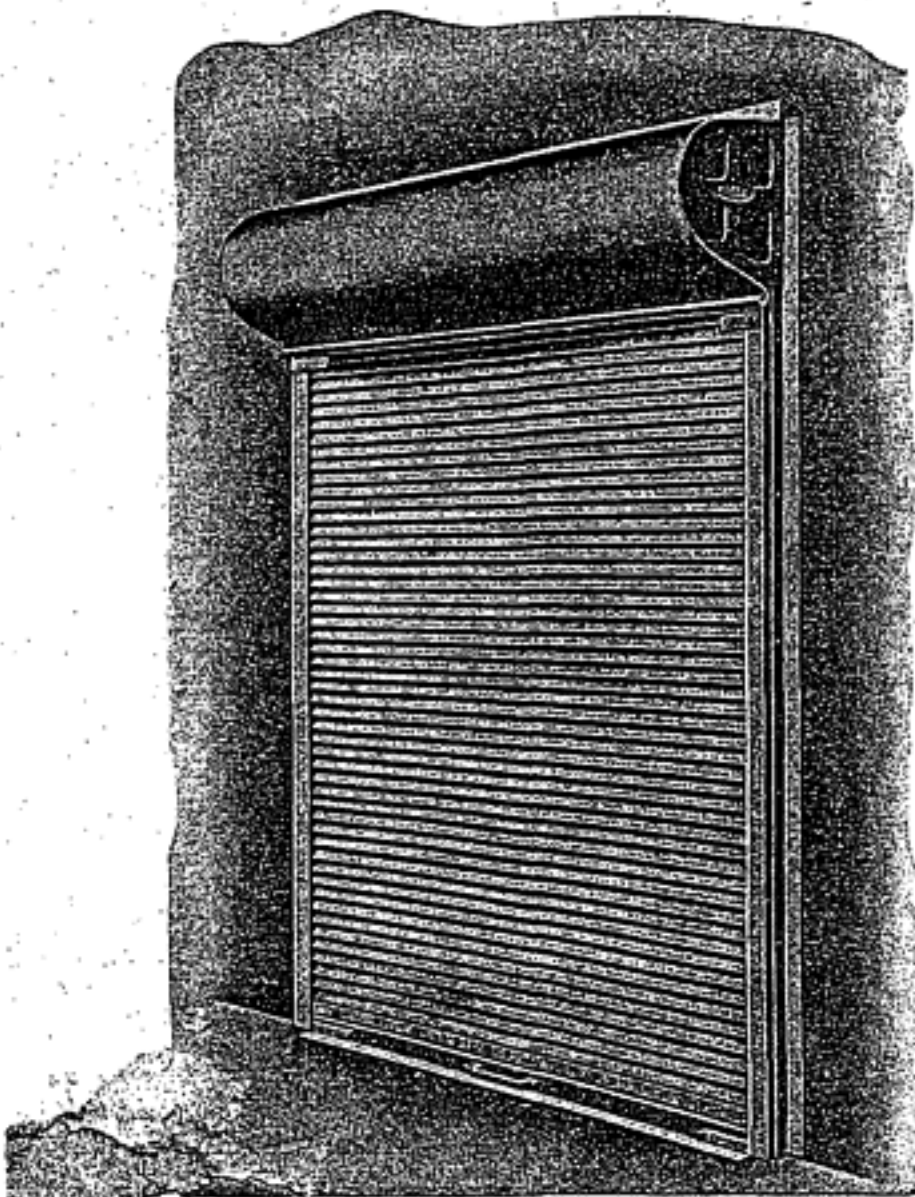
Furnished according to Underwriters specifications and bearing their label of approval they save their cost by reducing the insurance rate. These windows are designed and proportioned like wood windows of the same style. They look very much like wood windows. Cut shows type A double hung windows. Prices include frames, sash, 1/4" rough wired glass, sash weights, and chains, hardware and Underwriters label. These windows can be made to suit any size opening.



Type A—Double Hung

Openings Width and Height	Price
3'0" x 5'0".....	\$25.60
3'0" x 6'0".....	27.00
3'0" x 7'0".....	28.50
3'6" x 5'0".....	26.65
3'6" x 6'0".....	28.50
3'6" x 7'0".....	30.30

Send plans or list of windows so we can quote. We supply all styles—single pivoted, double pivoted, and standard pivoted as well as double hung.



## STEEL ROLLING DOORS

For entrance doors to garages, warehouses and for elevator shaft openings these doors are most practical. They do not take up any floor space whatever. They are manually operated by lift handles, or chains, or can be electrically controlled. Doors are easy to erect and easy to operate, always being correctly counterbalanced.

## NON-LABELED ROLLING STEEL DOORS

Opening Width and Height	Price	Opening Width and Height	Price
8'0" x 8'0".....	\$136.00	10'0" x 12'0".....	\$207.00
8'0" x 10'0".....	159.00	12'0" x 8'0".....	175.00
8'0" x 12'0".....	186.00	12'0" x 10'0".....	202.00

Prices are f. o. b. factory.

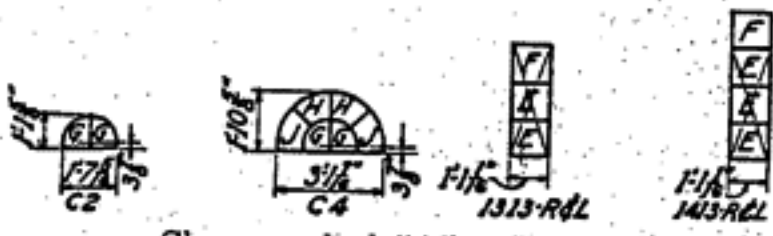
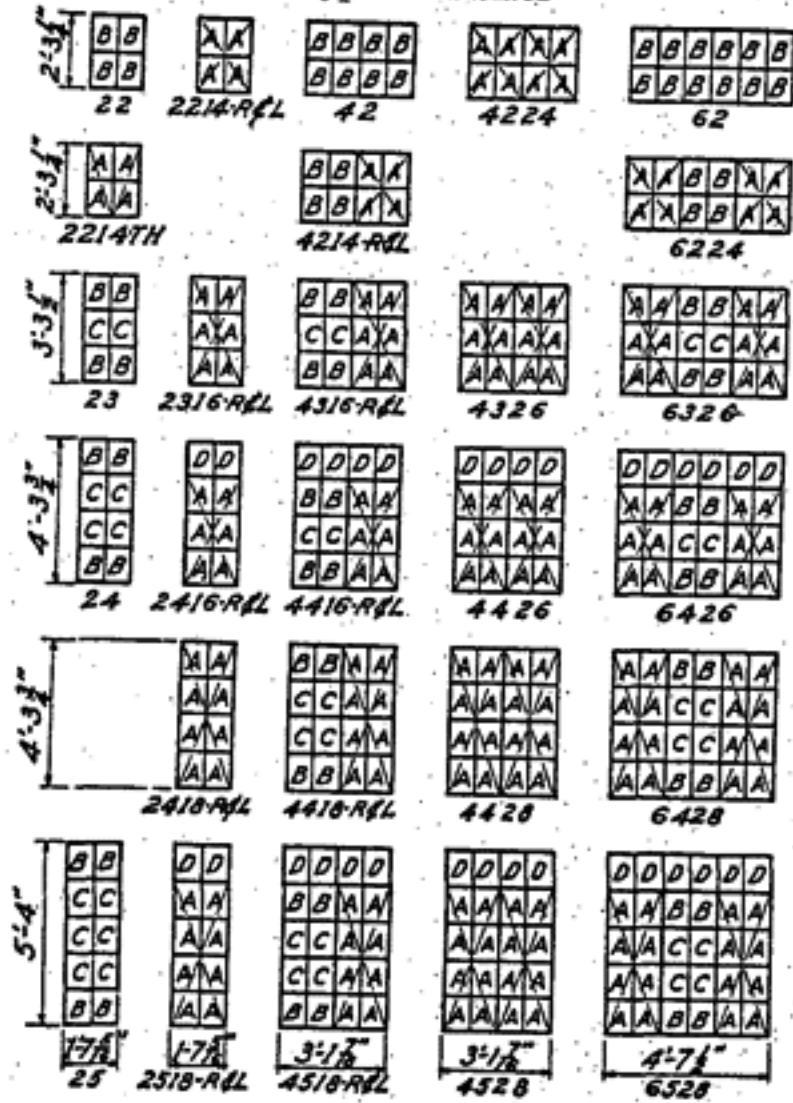
Send us plans or specifications or bill giving list of all doors that you need for special quantity prices.

The above doors can be shipped very promptly as they are standard sizes.



FENESTRA CASEMENTS FOR RESIDENCES

Types and Sizes



Glass marked "A"—8" x 12"

Glass is held with glazing clips, 2 per light. Mastic should be used around frame to seal the opening. We furnish mastic without extra charge.

Weather strips are not needed for Fenestra sash.

Send for large catalog and details for installation. Let us quote Fenestra casements compared to wood windows. Special prices on quantities.

# Rollscreens



Can be raised and lowered like a window shade. Made of heavy Aluminum Wire with steel mandrel and heavy spring encased in metal box two and one-half inches square. Guaranteed against mechanical defects for 10 years. Especially adapted for use with casement windows. Can be used on wood windows. Think of the convenience—always ready for use.

Prices

Width determines the cost. Prices are for any length up to 96 inches.

Up to 3'0" wide;	4'0" to 4'6" wide;
3'0" to 3'6" wide;	4'6" to 5'0" wide;
3'6" to 4'0" wide;	5'0" to 5'6" wide.

Send for catalog and details.

## FENESTRA FEATURES

Made of special rolled casement sections.

Can be installed in brick, stone, stucco or wood walls.

Ventilators on projecting hinges can be opened flat against the wall.

Easy to wash from the inside.

Frame and sash come completely assembled.

Prices include hardware.

"Cheaper than wood windows."



Fenestra casements have all the charm of the fine old windows so intimately associated with the romance and beauty of European architecture. They have the domestic atmosphere created by small panes and narrow muntins; the cheerful freedom of wide out-swinging leaves, and above all, the practical lighting and ventilating and weathering qualities of the best English casement designs.

## PRICE LIST

Including "clear vision" plate glass and putty. Iron hardware, Parkerized finish, included.

Type	Price	Type	Price	Type	Price
1313	\$ 8.40	2418	\$10.60	4528	\$21.80
1413	9.20	25	5.95	62	6.85
22	3.15	2518	11.50	6224	18.60
2214	8.30	42	5.20	6326	21.70
23	4.20	4224	15.65	6426	24.30
2316	9.50	4326	17.80	6428	24.65
24	5.10	4426	19.65	6528	27.65
2416	10.40	4428	20.00		

Prices F. O. B. Detroit, Mich. Discounts on Quantities.



# Fenestra

## PIVOTED STEEL WINDOWS

Fenestra Steel Windows, made from solid rolled steel bars, meet all demands of modern fireproof construction in garages, stores, factories, and all commercial buildings. They give 20 per cent more light than wood windows of the same overall size, reducing artificial lighting costs, increasing production, and eliminating accidents caused by insufficient lighting. They cost no more than ordinary windows, are easy to install in any type of construction—masonry or frame.

Solidly built, with patented interlocking muntin joints, rigidly attached adjustable butts, double contact weathering between ventilator and fixed portion, and

efficient ventilator control, these windows will last as long as any building in which they are installed. Complete hardware, consisting of a cam-acting latch to lock the ventilator shut and a notched stay-bar to hold it open, is included.

Each Fenestra Steel Sash is a complete unit, with ventilator pivoted in place and with an outside section all the way around to provide anchorage in the walls. They are painted one priming coat before shipment, and arrive on the job ready to install, without cutting or fitting.

### Stock Types, Sizes and Prices

Each number given with the stock sizes in the table shown on this page has a definite relation to the window beneath which it appears. The first digit indicates the number of lights in the width; the second figure the number of lights in the height; the third figure (1) shows that the window has one ventilator; the fourth figure gives the number of lights in the ventilator; the fifth and last digit shows the position of the ventilator (either flush with the sill, or one light above it).

HEIGHTS  
2 PANES  
Y-3'-10"  
Z-3'-5 1/2"



32160



42160



52160

3 PANES  
Y-4'-0"  
Z-3'-5 1/2"



33161

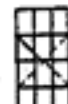


43161

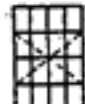


53161

4 PANES  
Y-6'-2 1/2"  
Z-6'-0 1/2"



34161

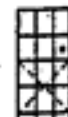


44161

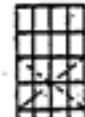


54161

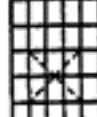
5 PANES  
Y-7'-0 1/2"  
Z-6'-6 1/2"



35161



45161



55161

WIDTHS

3 PANES  
Y-3'-2"  
Z-3'-0"

4 PANES  
Y-4'-2 1/2"  
Z-4'-0 1/2"

5 PANES  
Y-5'-2 1/2"  
Z-6'-0 1/2"

To indicate the size of the lights, the letter "Z" is prefixed to the number when the glass size is 14" x 20", and the letter "Y" to denote 12" x 18" glass size.

In using this table, be sure to combine "Z" widths with "Z" heights and "Y" widths with "Y" heights.

Send for Catalogues.

- Fenestra Sidewall Steel Sash.
- Fenestra Continuous Steel Sash.
- Fenestra Steel Casements.
- Fenestra Steel Basement Windows.

### Fenestra Sash, Glass and Putty

Prices include frames and sash completely assembled with hardware attached and priming coat of paint, 1/8" factory or D. S. glass and special steel sash putty. Glass shipped separately. Glazing must be done at building.

#### Windows for 14 x 20" Glass Lights

Type	Masonry Width	Opening Height	Price including glass and putty
Z32160	3' 8"	x 3' 5 1/2"	\$ 9.75
Z33161	3' 8"	x 5' 2"	11.85
Z34161	3' 8"	x 6' 10 1/2"	14.10
Z35161	3' 8"	x 8' 6 1/2"	16.40
Z42180	4' 10 1/2"	x 3' 5 1/2"	\$11.65
Z43181	4' 10 1/2"	x 5' 2"	14.60
Z44181	4' 10 1/2"	x 6' 10 1/2"	17.45
Z45181	4' 10 1/2"	x 8' 6 1/2"	20.40
Z52160	6' 0 3/4"	x 3' 5 1/2"	\$12.60
Z53161	6' 0 3/4"	x 5' 2"	16.20
Z54161	6' 0 3/4"	x 6' 10 1/2"	19.80
Z55161	6' 0 3/4"	x 8' 6 1/2"	23.40

We can furnish from stock mullions to join two or more sash in one opening.

#### Windows for 12 x 18" glass.

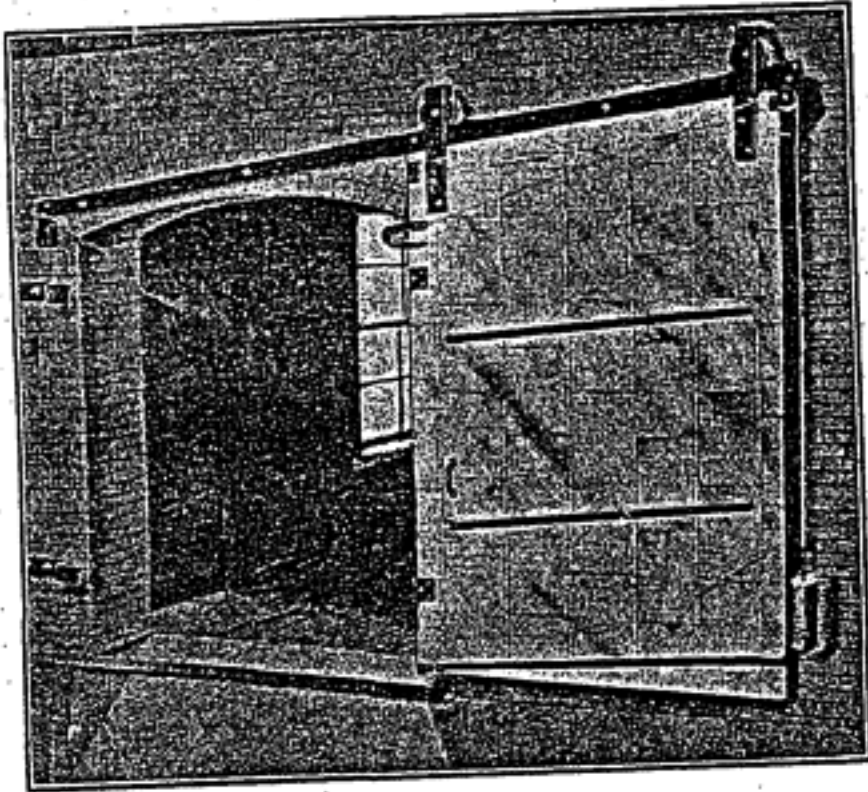
Y32160	3' 2"	x 3' 1 1/2"	\$ 8.80
Y33161	3' 2"	x 4' 8"	10.30
Y34161	3' 2"	x 6' 2 3/4"	12.20
Y35161	3' 2"	x 7' 8 3/4"	14.25
Y42180	4' 2 3/4"	x 3' 1 1/2"	\$10.20
Y43181	4' 2 3/4"	x 4' 8"	12.65
Y44181	4' 2 3/4"	x 6' 2 3/4"	15.00
Y45181	4' 2 3/4"	x 7' 8 3/4"	17.40
Y52160	5' 2 3/4"	x 3' 1 1/2"	\$10.95
Y53161	5' 2 3/4"	x 4' 8"	13.90
Y54161	5' 2 3/4"	x 6' 2 3/4"	16.80
Y55161	5' 2 3/4"	x 7' 8 3/4"	20.00

Write for special prices on large quantities.

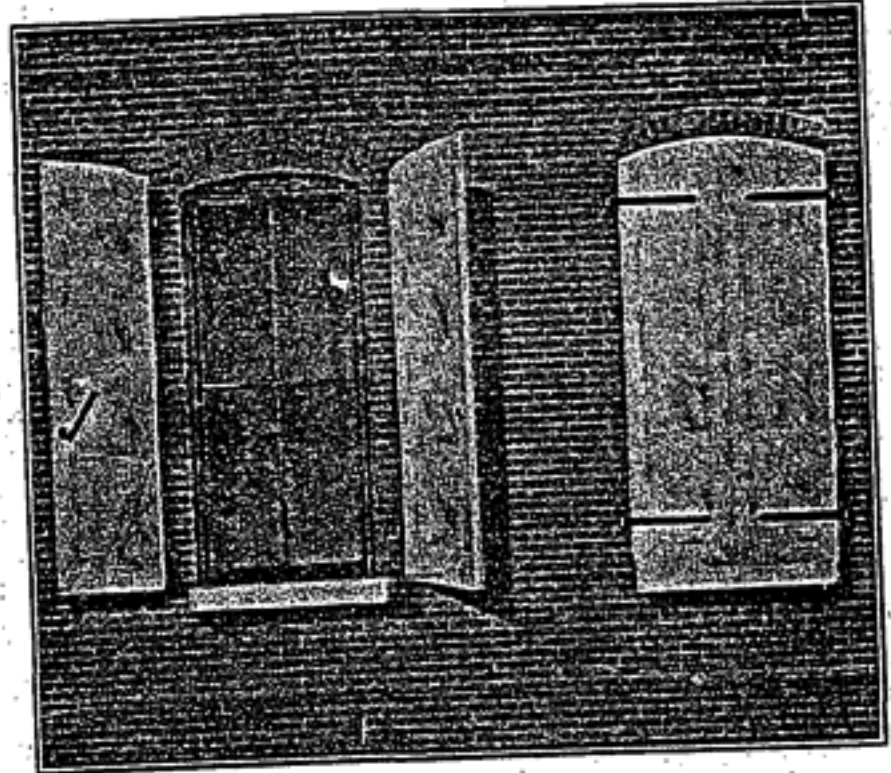


## Fire Doors and Shutters

Standard tin clad fire doors and shutters are approved by the National Board of Fire Underwriters and soon pay for themselves by reducing the insurance rate. We are glad to quote prices on receipt of measurements including thickness of wall and number of openings.



No. 200 Gravity Sliding Fire Door

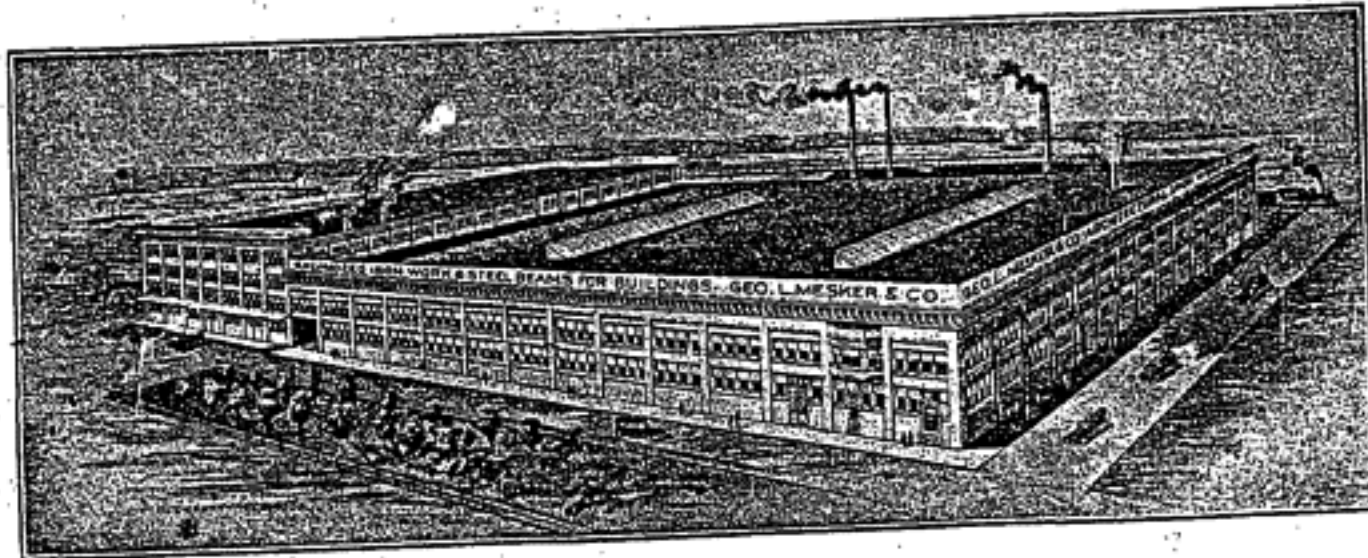


No. 201 Swinging Fire Shutters

## The Plant Behind Mesker Products

ORGANIZED FOR SERVICE

Built up to its present efficiency by faithfully serving its customers for over half a century.



GEO. L. MESKER & CO.  
EVANSVILLE, INDIANA

*Better Trusses for Less Money*