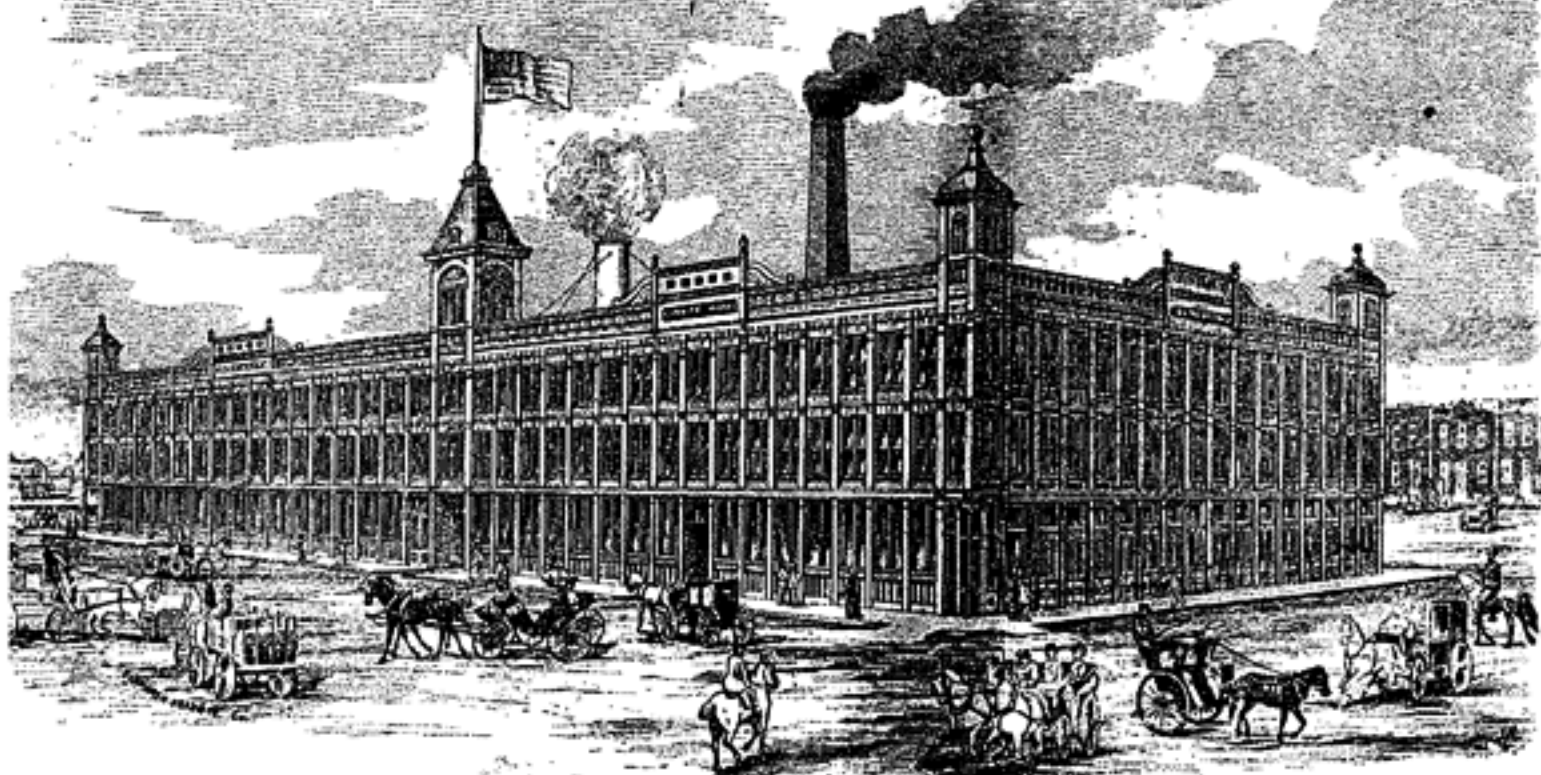


GEO. L. MESKER & CO.,



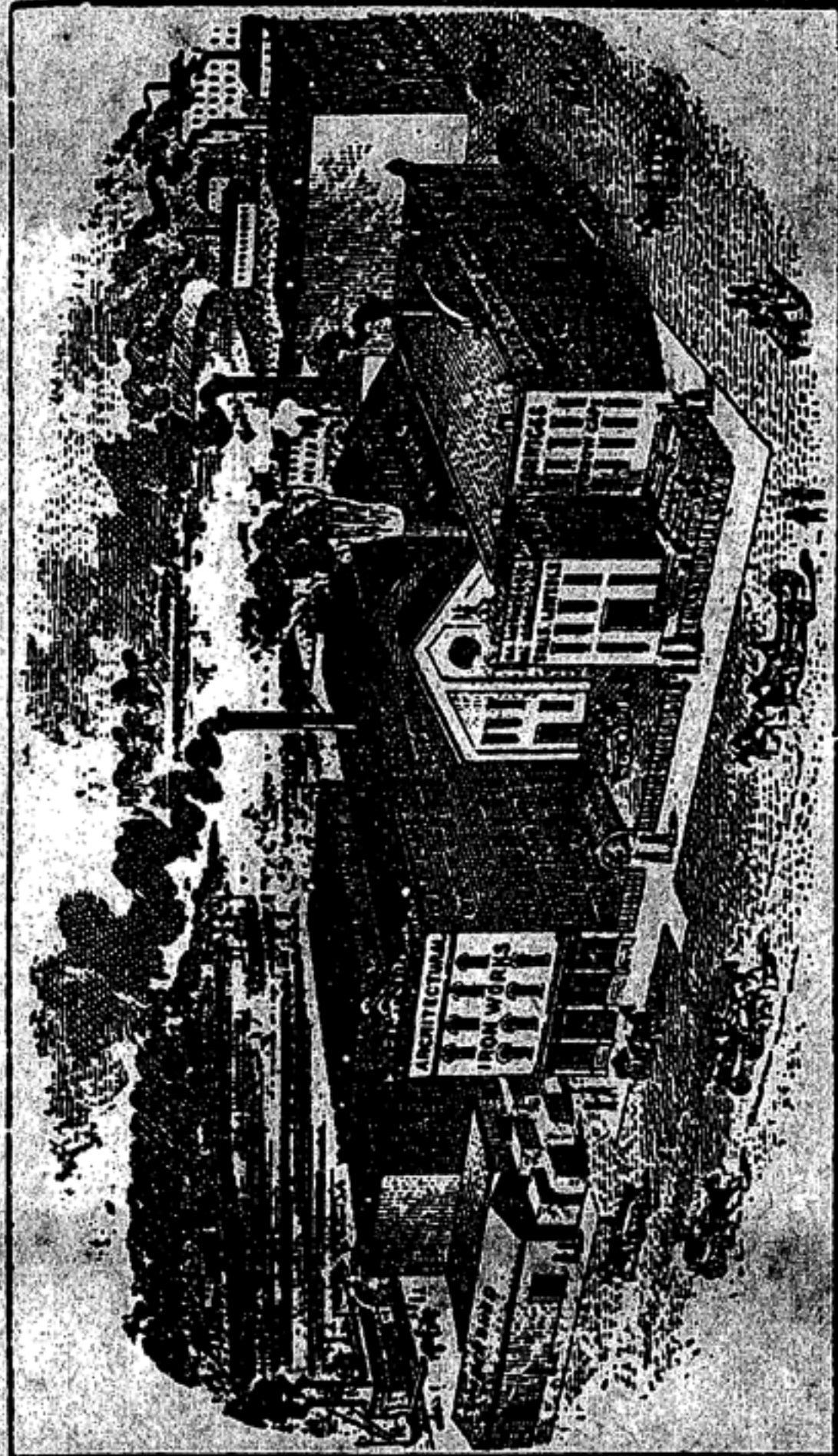
BUILDING 150 x 310 FT. ERECTED 1892.



DESTROYED BY FIRE OCTOBER 16, 1891.

ARCHITECTURAL IRON WORKS,

EVANSVILLE, INDIANA.



DESTROYED BY FIRE OCTOBER 16, 1891.

ARCHITECTURAL FOUNDRY AND GALVANIZED IRON WORKS.



GEO. L. MESKER & CO.,

EVANSVILLE, IND.

MANUFACTURERS OF

CAST IRON, WROUGHT IRON AND GALVANIZED IRON
WORK FOR BUILDINGS.



We take pleasure in presenting to the public this year our catalogue of new and improved designs for store fronts. We invite comparison of our designs with those of other manufacturers. Our prices are low, and the quality of our work is not surpassed by any firm in the country, while some manufacturers are putting on the market a class of work which is far inferior to that which we produce.

During the past year we were compelled to subject some of our customers to a little delay, on account of the burning of our works, which occurred on October 16. We were not to be daunted, however, by this circumstance. We had a temporary building up and were running a week after the fire. From the ashes of this conflagration has arisen the magnificent plant of which we show a picture on the first page.

THIS CATALOGUE

Was designed in our establishment, and will be found very convenient by those of our customers who wish to vary the styles of upper and lower fronts shown. From the 5th to the 20th pages the leaves are perforated between the upper and lower stories, and may be separated so as to form various combinations by bringing different upper and lower halves of leaves together. It will be seen that the upper and lower parts of the buildings are numbered differently.

PATENT APPLIED FOR.

If you intend building or putting in a new front, write to us for designs and prices of cast iron and galvanized iron work for same. Give us the outside width of the building and height of stories, and state about what style of work is wanted, and we will quote you lowest net prices.

Iron fronts can be put into old buildings without taking down the second story front walls. We will send full instructions for putting new fronts into old buildings on application.

In writing for prices state your wishes plainly, and give all necessary measurements, such as the outside width of the building, height of stories and width of door, stair or other openings. Tear the designs wanted out of the catalogue and send with your letter, and we will return them.

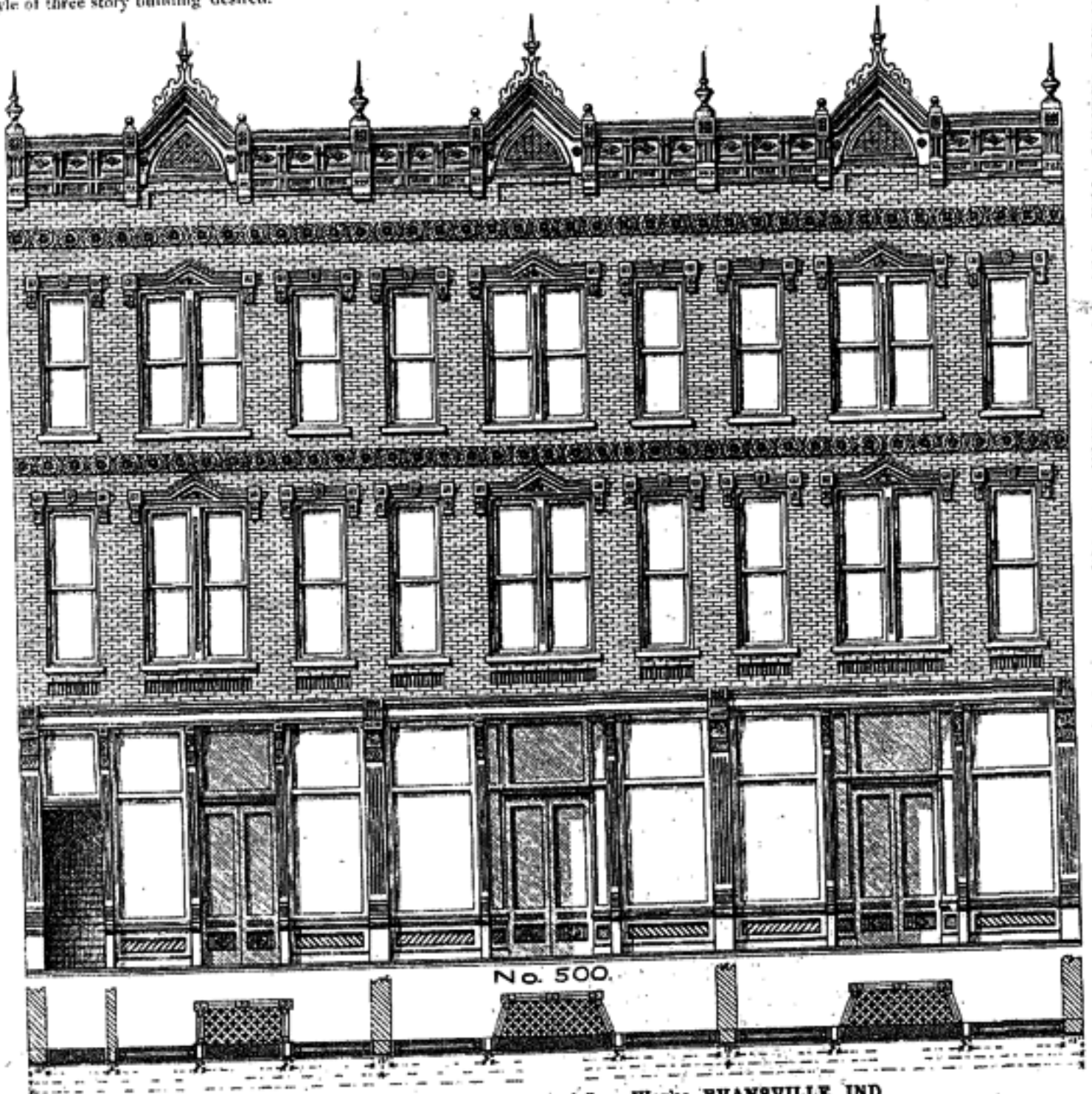
Parties who have no commercial rating should send us a letter of credit from their banker or a merchant of high standing, to save delay.

Address all communications plainly to

1892.

GEO. L. MESKER & CO.,
ARCHITECTURAL IRON WORKS,
EVANSVILLE, INDIANA.

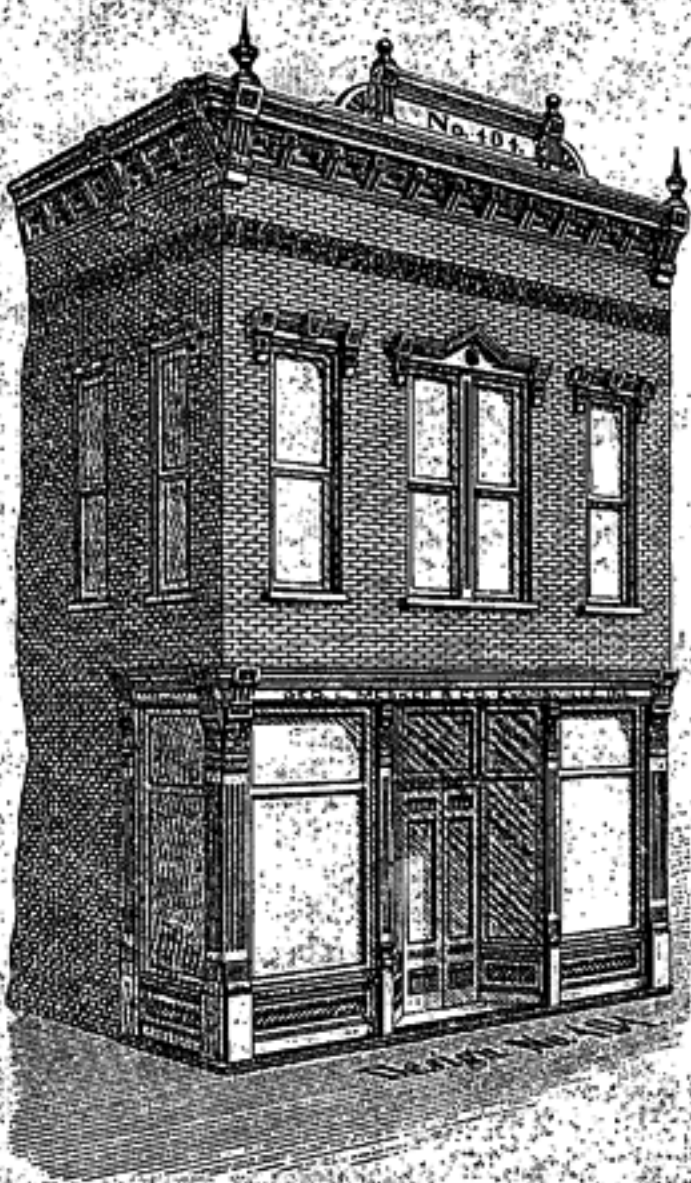
We have a large number of designs of three story buildings, for one, two, three and four stories. All the two-story designs herein shown can be used also for three story fronts. Send us the dimensions of proposed building and we will quote special prices on any style of three story building desired.



GEO. L. MESKER & CO., Architectural Iron Works, EVANSVILLE, IND.

No. 414.—Galvanized iron lintel-cornice, main cornice, pediment, scrolls, urns, and four window caps, for 20 ft. front and 8 ft. return; \$102.24

No. 404.—Galvanized iron lintel-cornice, main cornice, pediment, scrolls, urns, and four window caps, for 20 ft. front and 8 ft. return, \$98.85.
Bell-course, extra.



No. 404.—Cast iron sills, lintels and columns, for 20 ft. front and 8 ft. return, \$157.60.

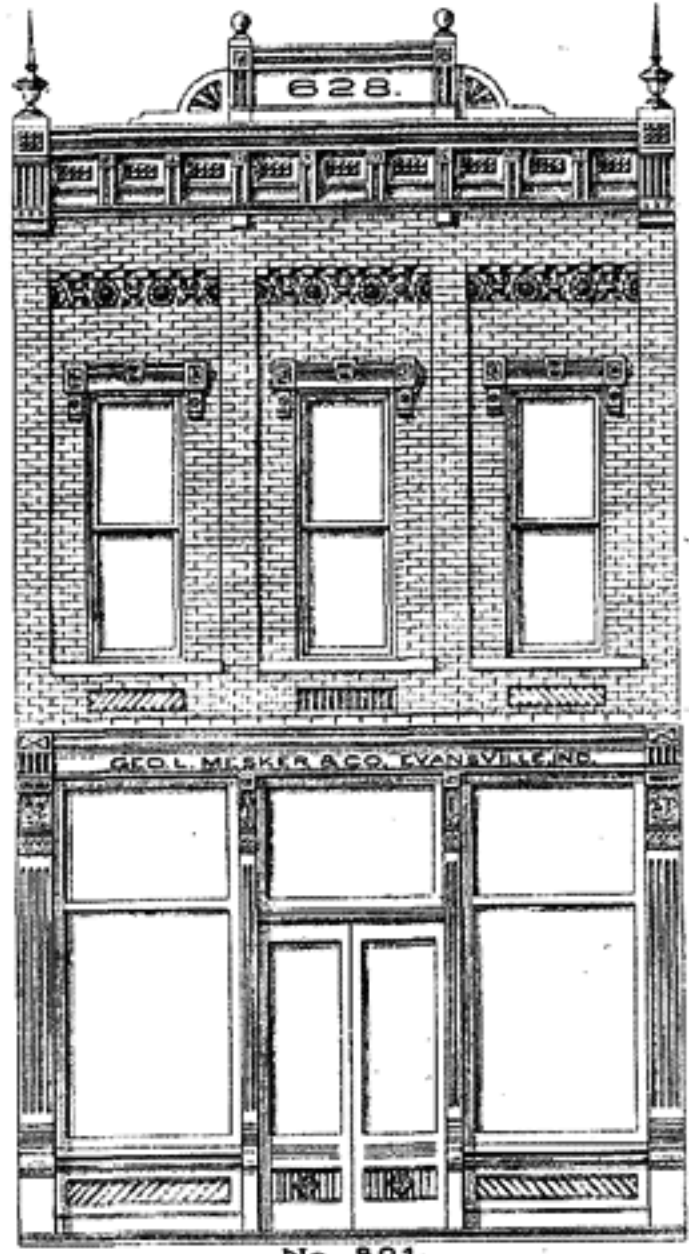


No. 414.—Cast iron sills, lintels and columns, for 20 ft. front and 8 ft. return, \$160.00.

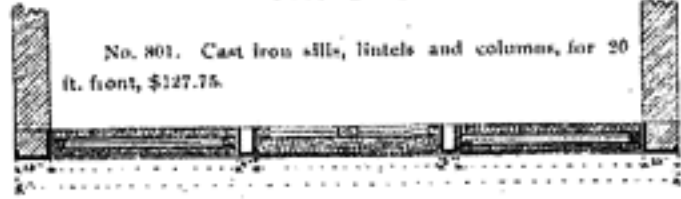
No. 625. Galvanized iron main cornice, lintel cornice, window caps, pediment, scrolls and urns, for 20 ft. front, \$78.35. Belt course, extra.

No. 805. Cast iron sills, lintels and columns, for 20 ft. front, \$127.75.

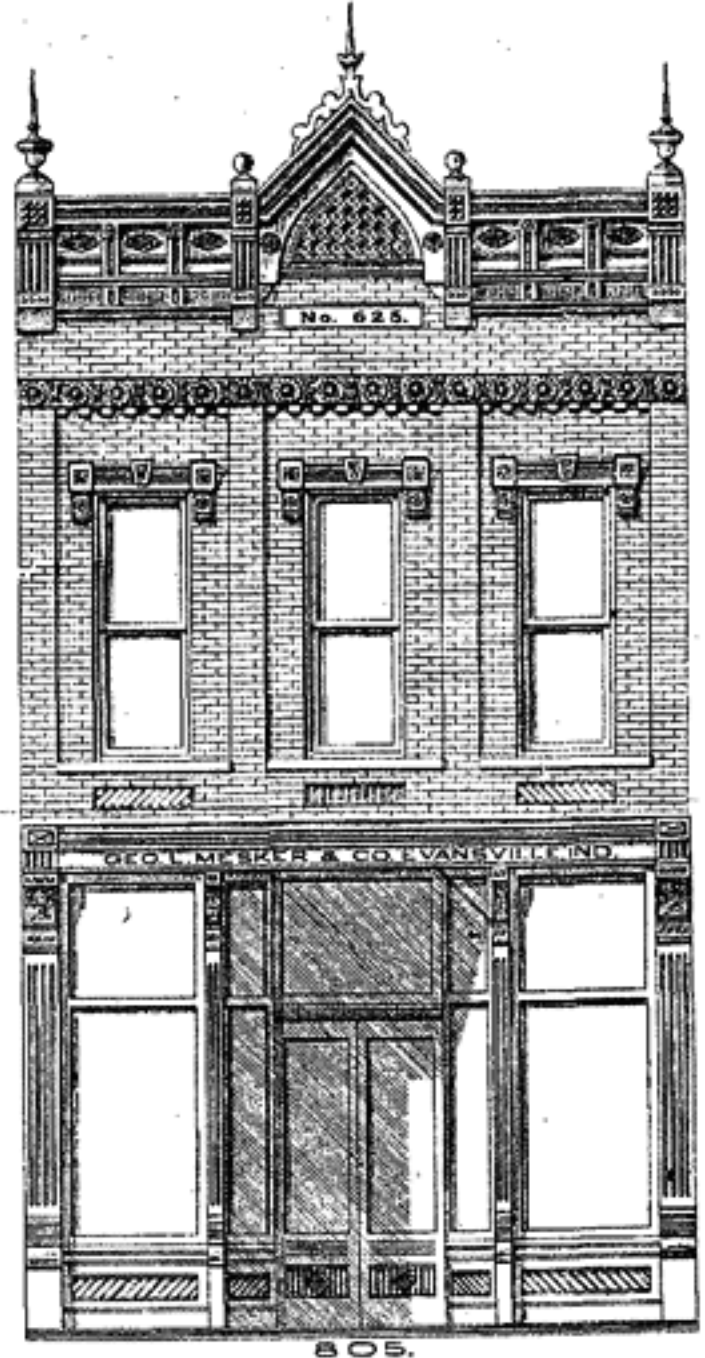
No. 628. Galvanized iron main cornice, lintel cornice, window caps, pediment, scrolls and urns, for 20 ft. front, \$67.25. Belt course, extra.



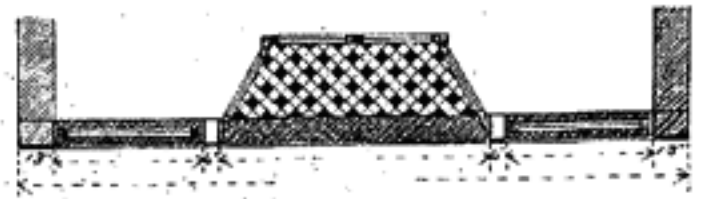
No. 801.



No. 801. Cast iron sills, lintels and columns, for 20 ft. front, \$127.75.

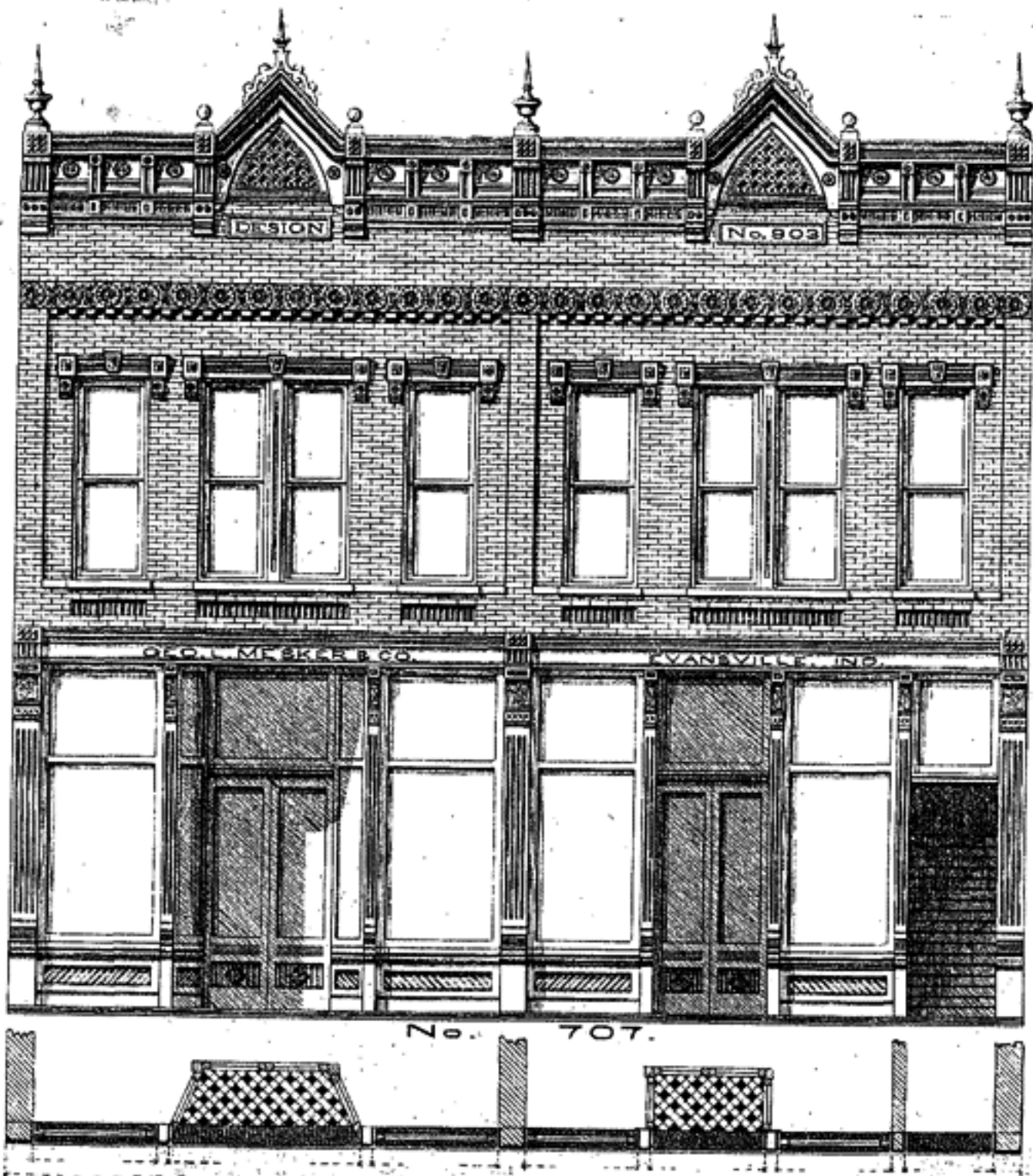


805.



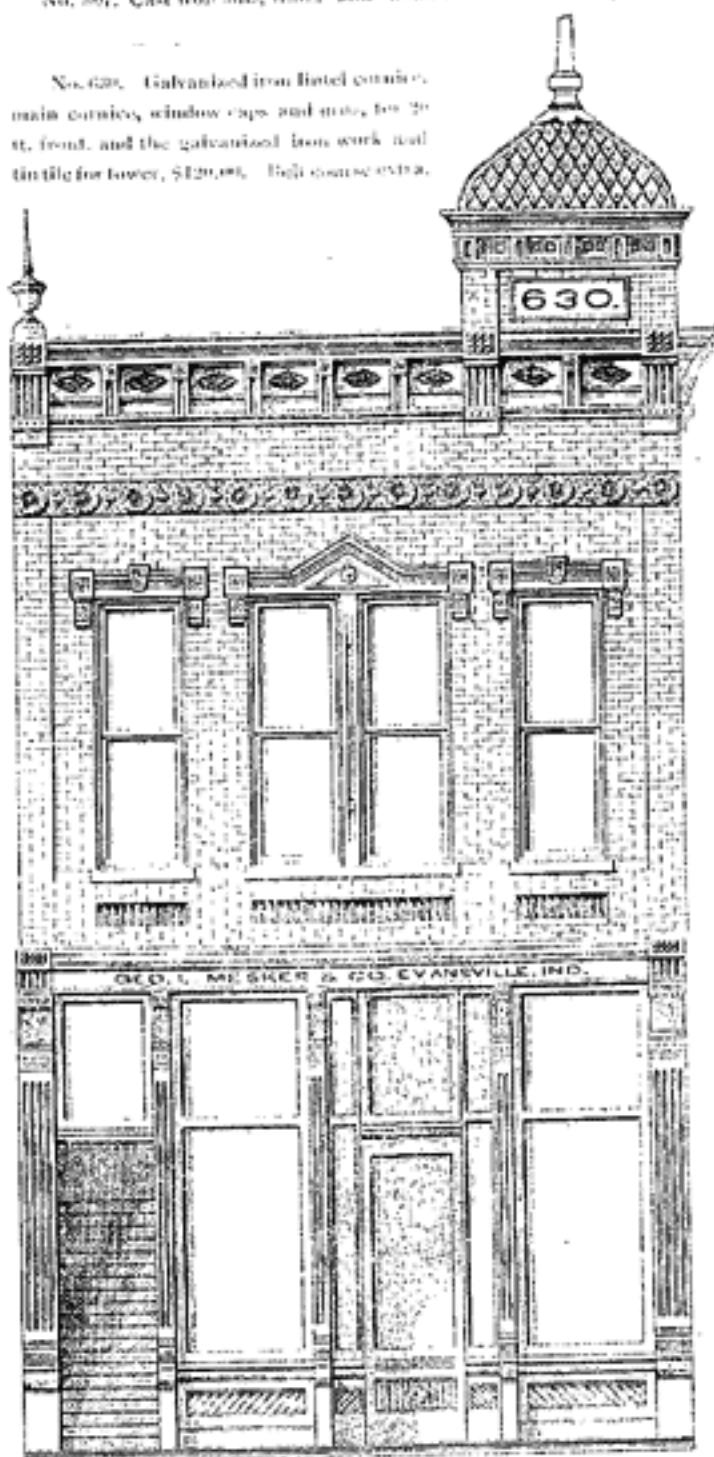
No. 903. Galvanized iron main cornice, lintel cornice, window caps, pediments, scrolls and urns, for 49 ft. front, \$133.35. Belt course extra.

No. 707. Cast iron sills, Hotels and columns, for 49 ft. front, \$235.00.



No. 307, Cast iron sills, lintels and columns for 70 ft. front, \$129.00.

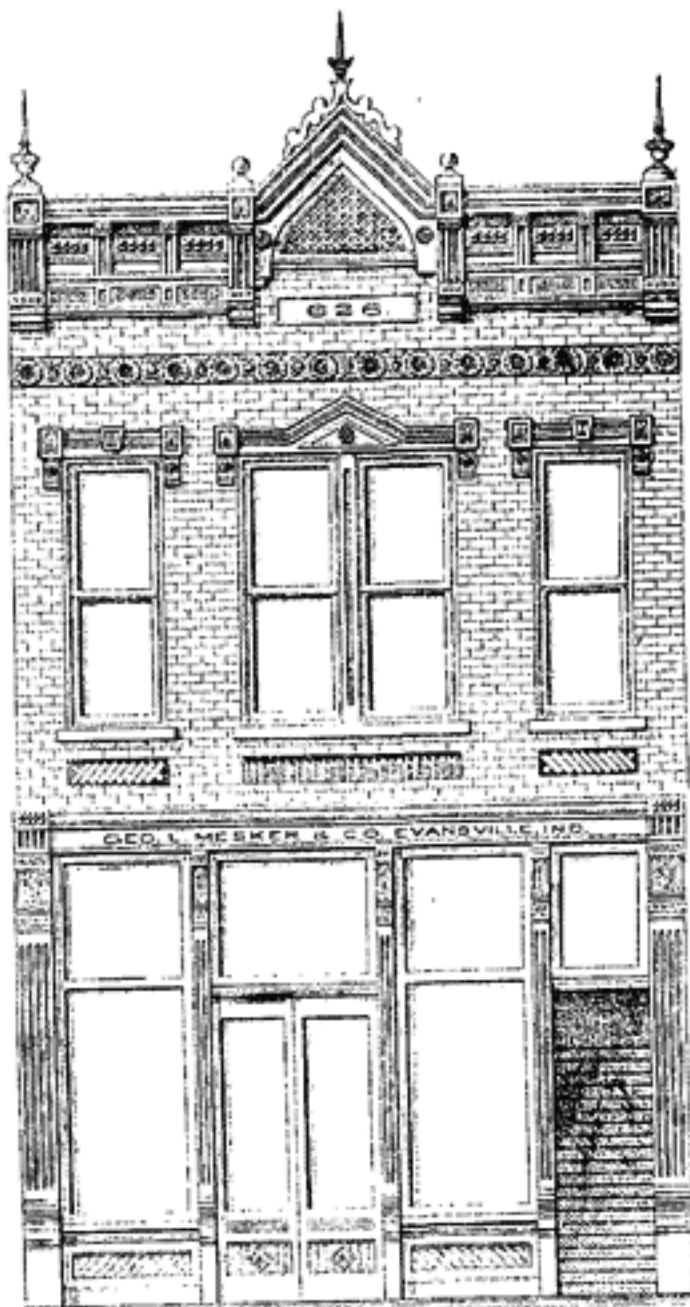
No. 629, Galvanized iron lintel cornice, main cornice, window caps and trim, for 70 ft. front, and the galvanized iron work and tile for tower, \$129.00. (Full course extra.)



807.



No. 626, Galvanized iron lintel cornice, main cornice, window caps, pediment, scrolls and trim, for 70 ft. front, \$87.25. (Full course extra.)



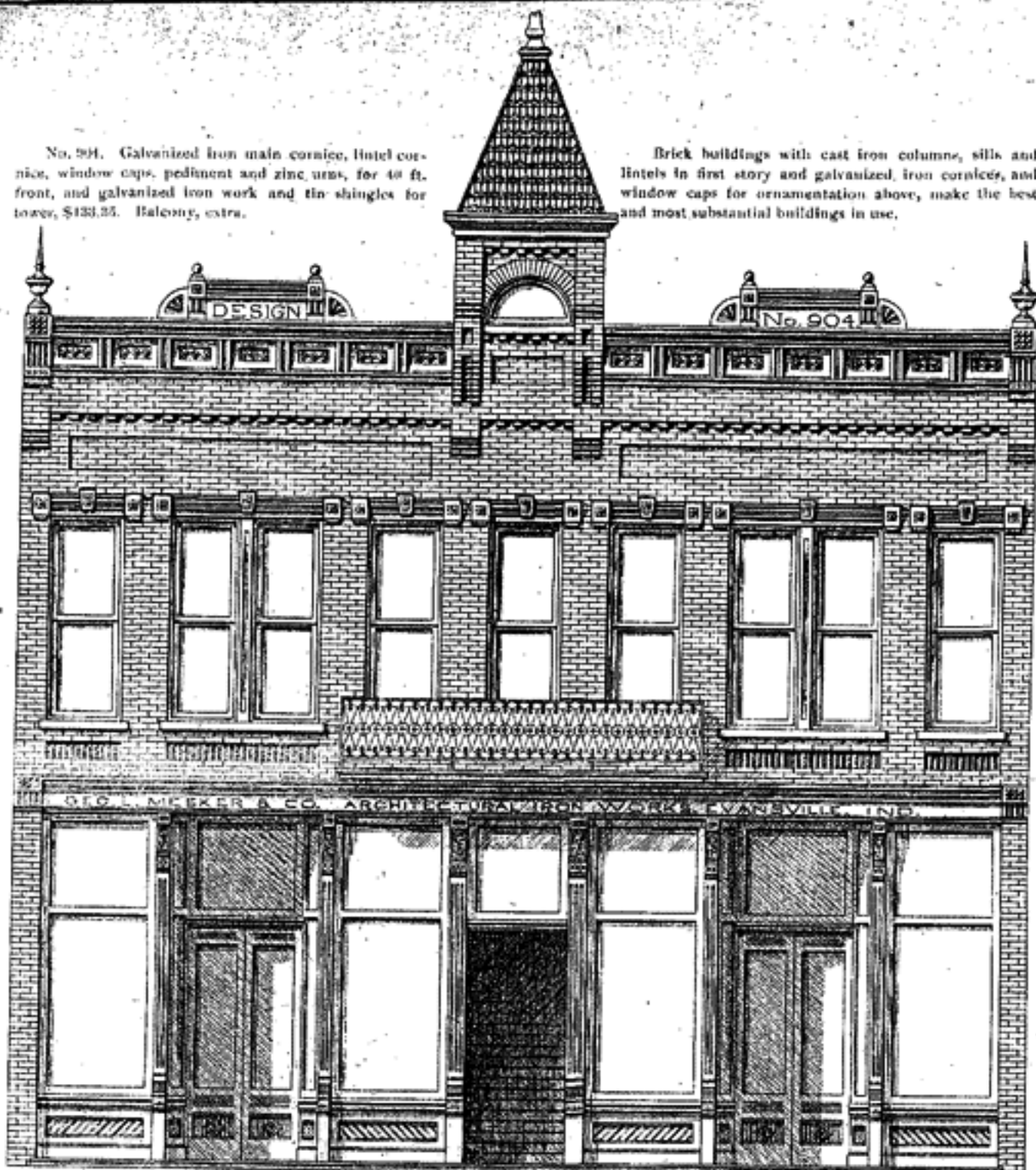
808.

No. 806, Cast iron sills, lintels and columns, for 70 ft. front, \$129.00.



No. 904. Galvanized iron main cornice, hotel cornice, window caps, pediment and zinc urns, for 40 ft. front, and galvanized iron work and tin shingles for tower, \$133.35. Balcony, extra.

Brick buildings with cast iron columns, sills and lintels in first story and galvanized iron cornices, and window caps for ornamentation above, make the best and most substantial buildings in use.



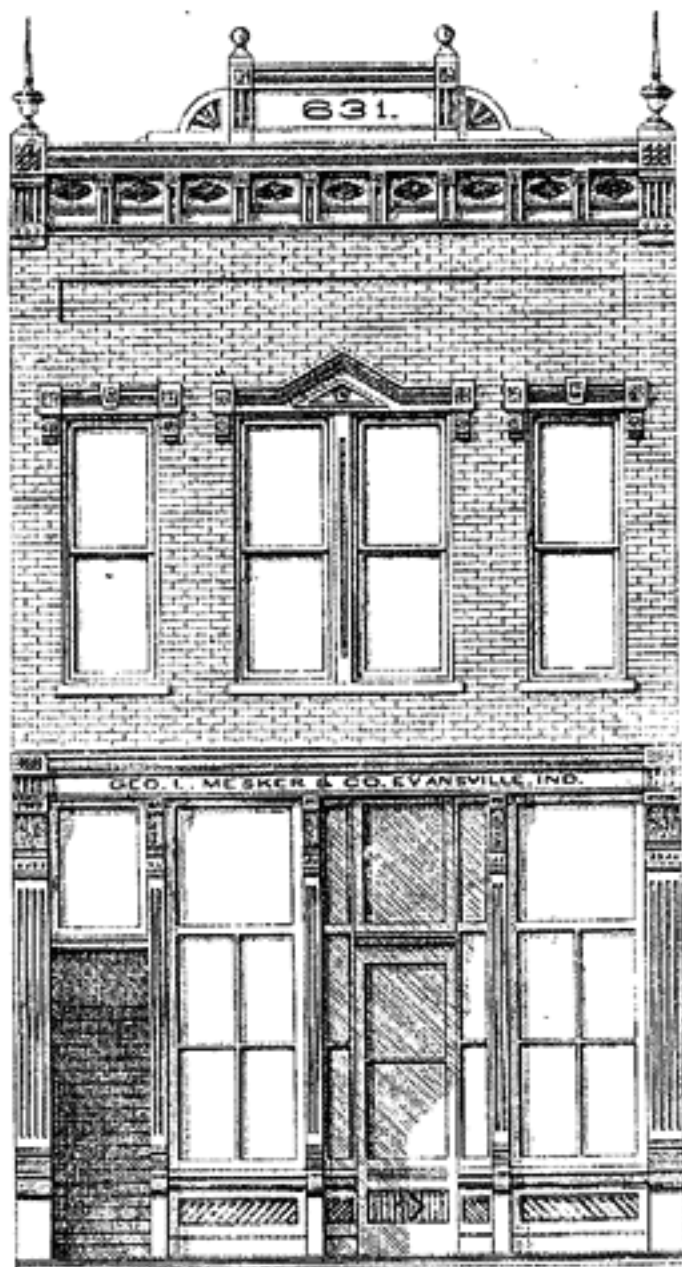
No. 708.



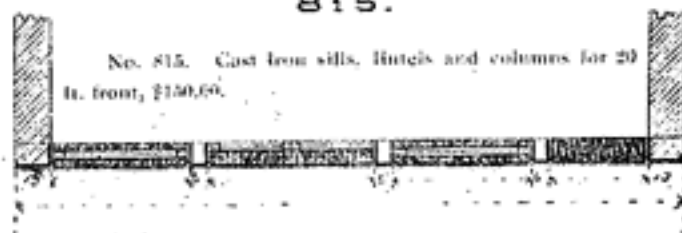
No. 708. Cast-iron sills, lintels and columns, for 40 ft. front, \$216.75.

No. 631. Galvanized iron lintel cornice, main cornice, window caps, pediment, scrolls and urns for 20 ft. front, \$76.70.

No. 810. Cast iron sills, lintels and columns for 20 ft. front, \$150.00.



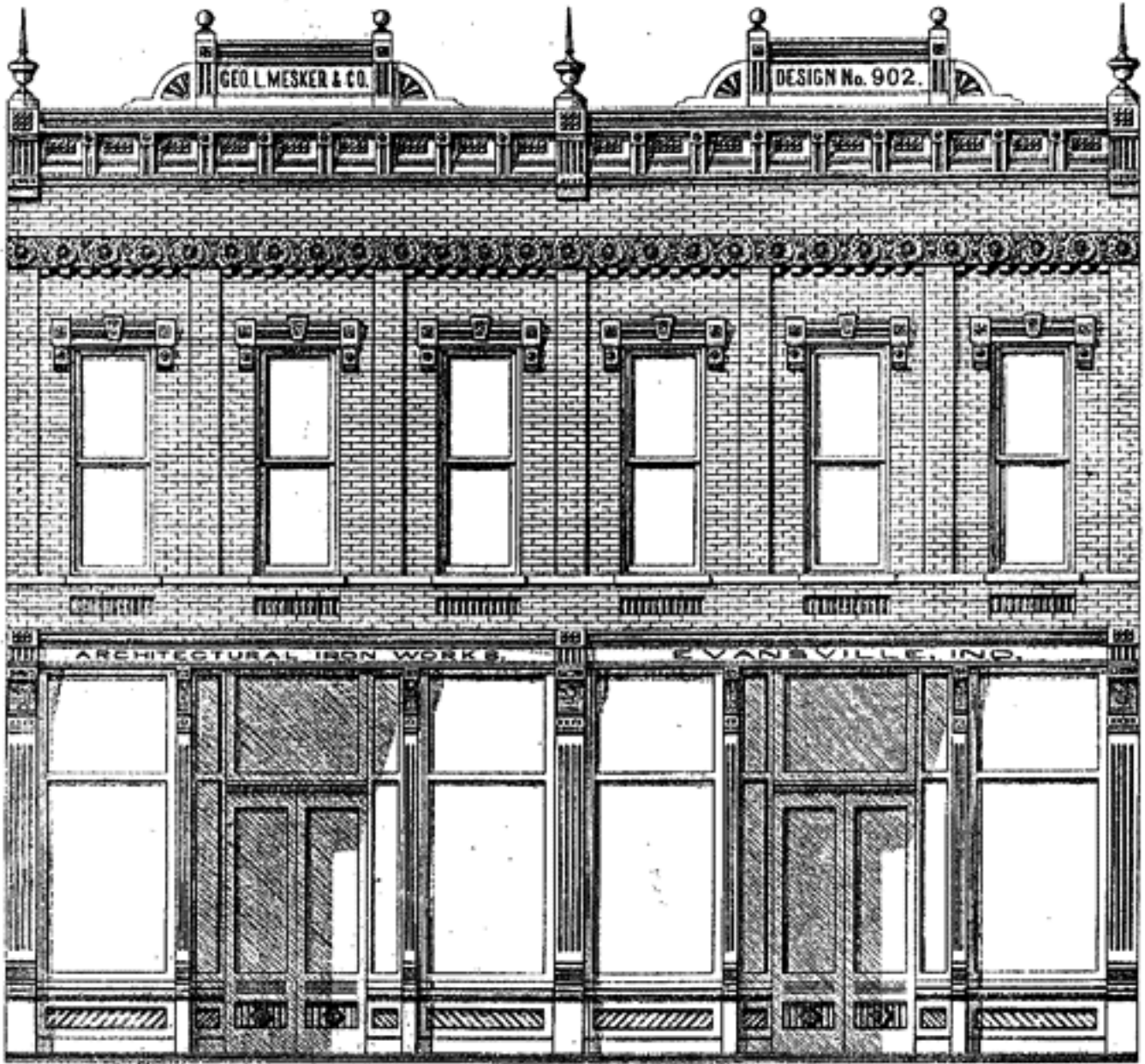
No. 627. Galvanized iron lintel cornice, main cornice, window caps and urns for 20 ft. front, and galvanized iron work and tin shingles for tower, \$83.00. Belt course extra.



No. 815. Cast iron sills, lintels and columns for 20 ft. front, \$150.00.

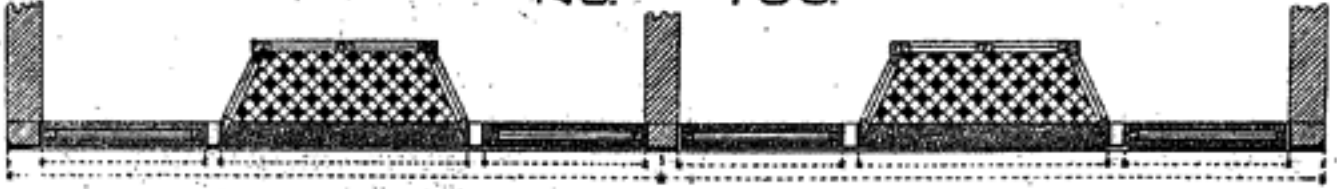
No. 902. Galvanized iron lintel cornice, main cornice, window caps, pediments, scrolls and urns, for 40 ft. front, \$131.45. Reli course extra.

No. 706. Cast iron sills, lintels and columns, for 40 ft. front, \$238.96.



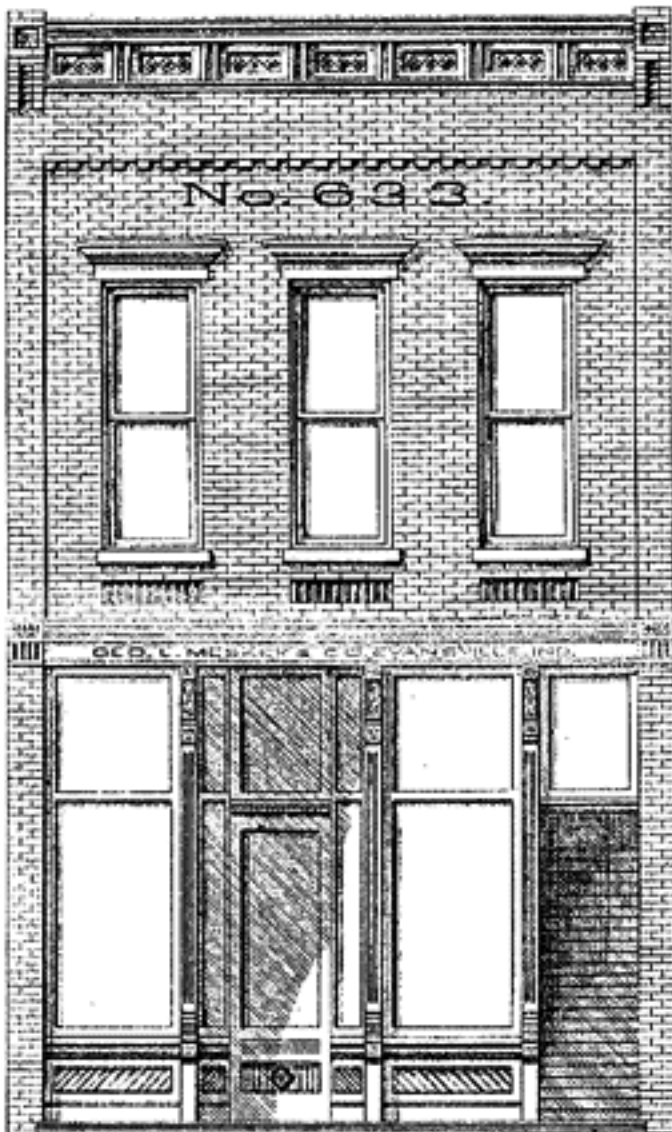
10

No. 706.



No. 633. Galvanized iron lintel cornice, main cornice and window caps, for 20 ft. front, \$30.45.

No. 803. Cast iron sills, lintels and columns, for 20 ft. front, \$105.45.

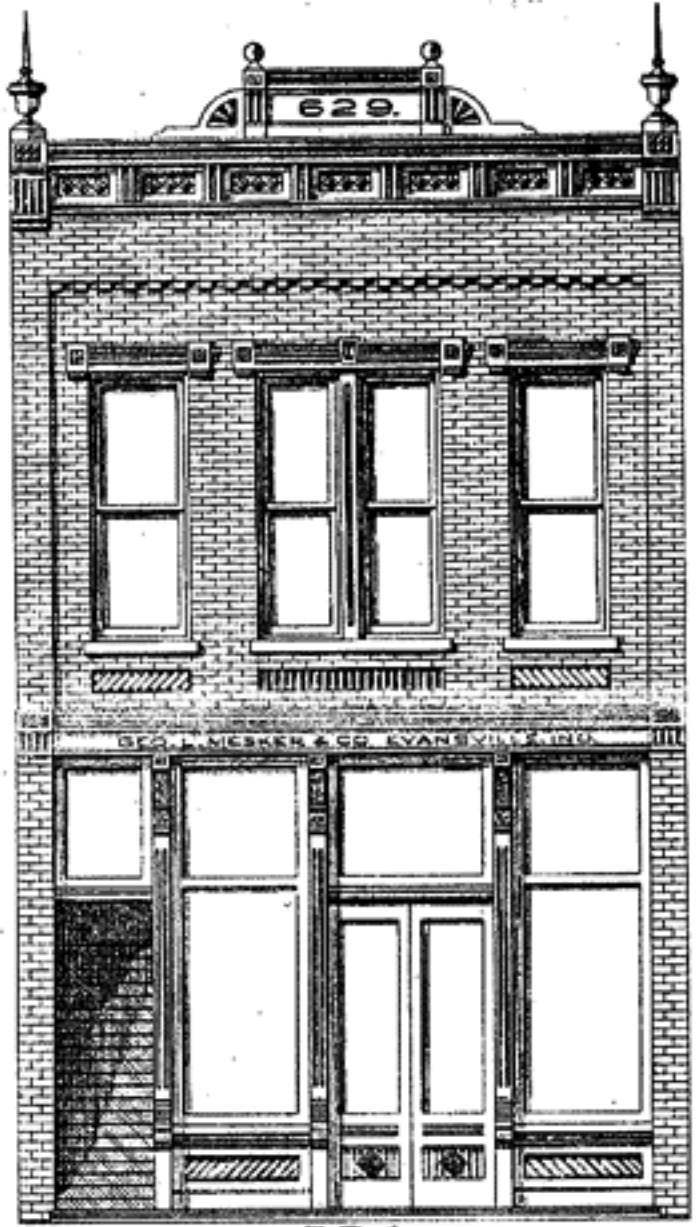


803.



No. 629. Galvanized iron lintel cornice, main cornice, window caps, pediment, scrolls and urns, for 20 ft. front, \$67.80.

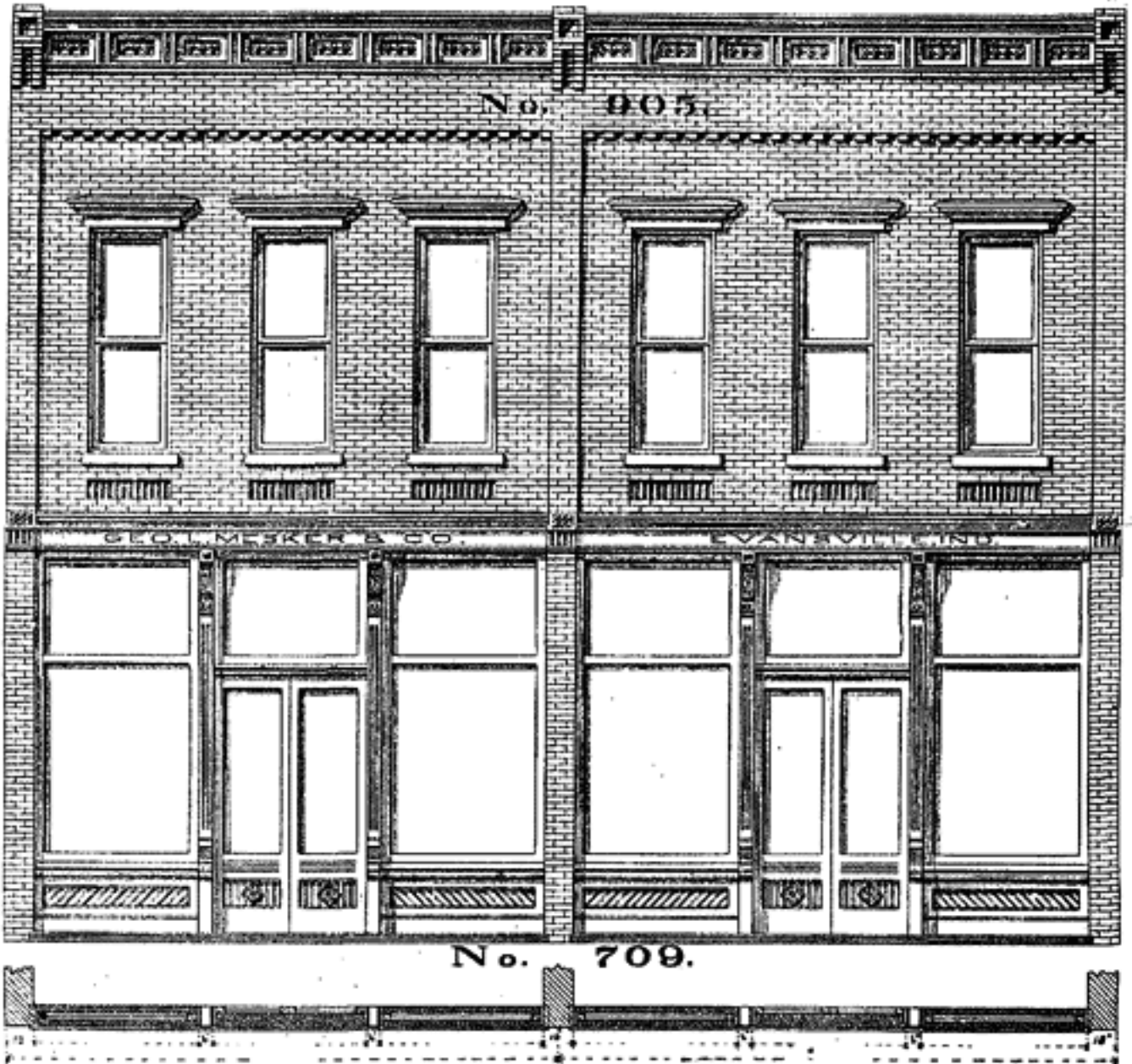
No. 804. Cast iron sills, lintels and columns, for 20 ft. front, \$105.45.



804.



No. 708. Galvanized iron lintel cornice, mals cornice and window caps, for 40 ft. front, \$80.00.

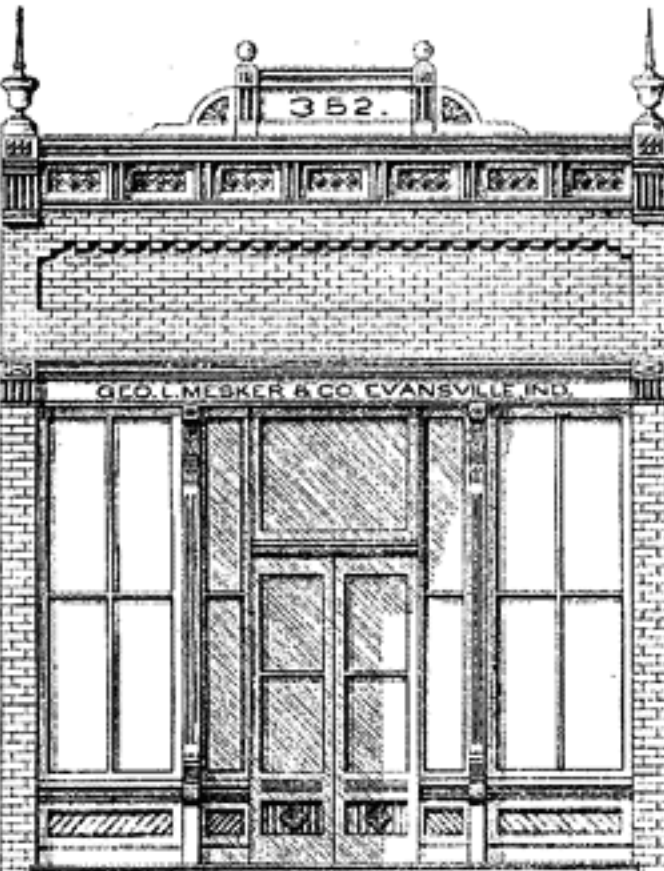


No. 709. Cast iron sills, lintels and columns, for 40 ft. front. \$168.75.

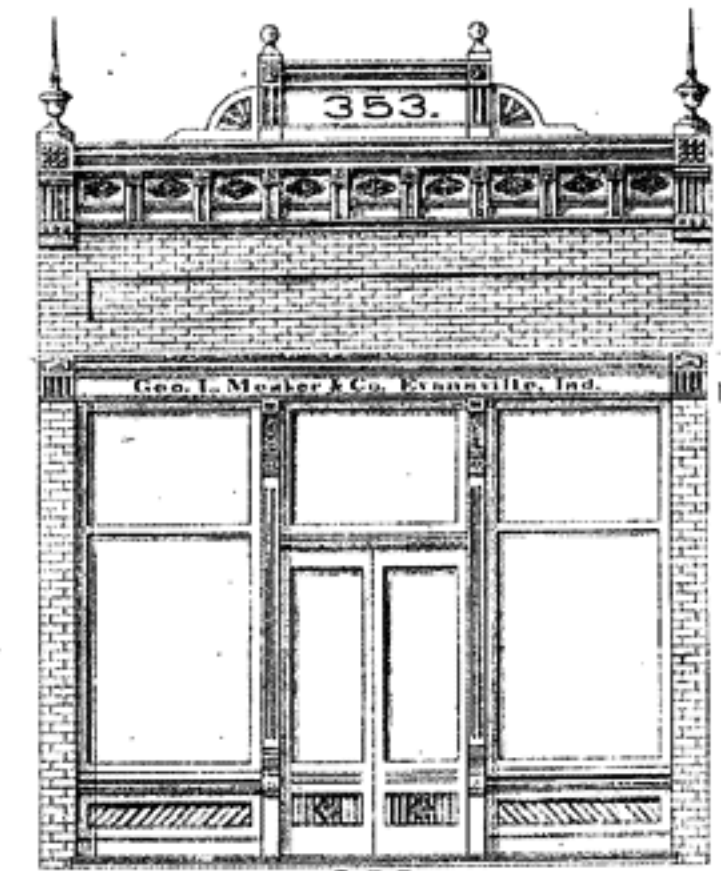
There is nothing superior to cast iron columns for the fronts of store buildings. They are handsome, substantial and durable. Our columns are not made of plates bolted together, such as are furnished by many firms, but are cast in one piece, including the base, capital, and all the carving and other ornamental work.

No. 352. Galvanized iron lintel cornice, main cornice, pediment, scrolls and urns, for 20 ft. front, \$44.50.

No. 813. Cast iron sills, lintels and columns, for 20 ft. front, \$83.55.

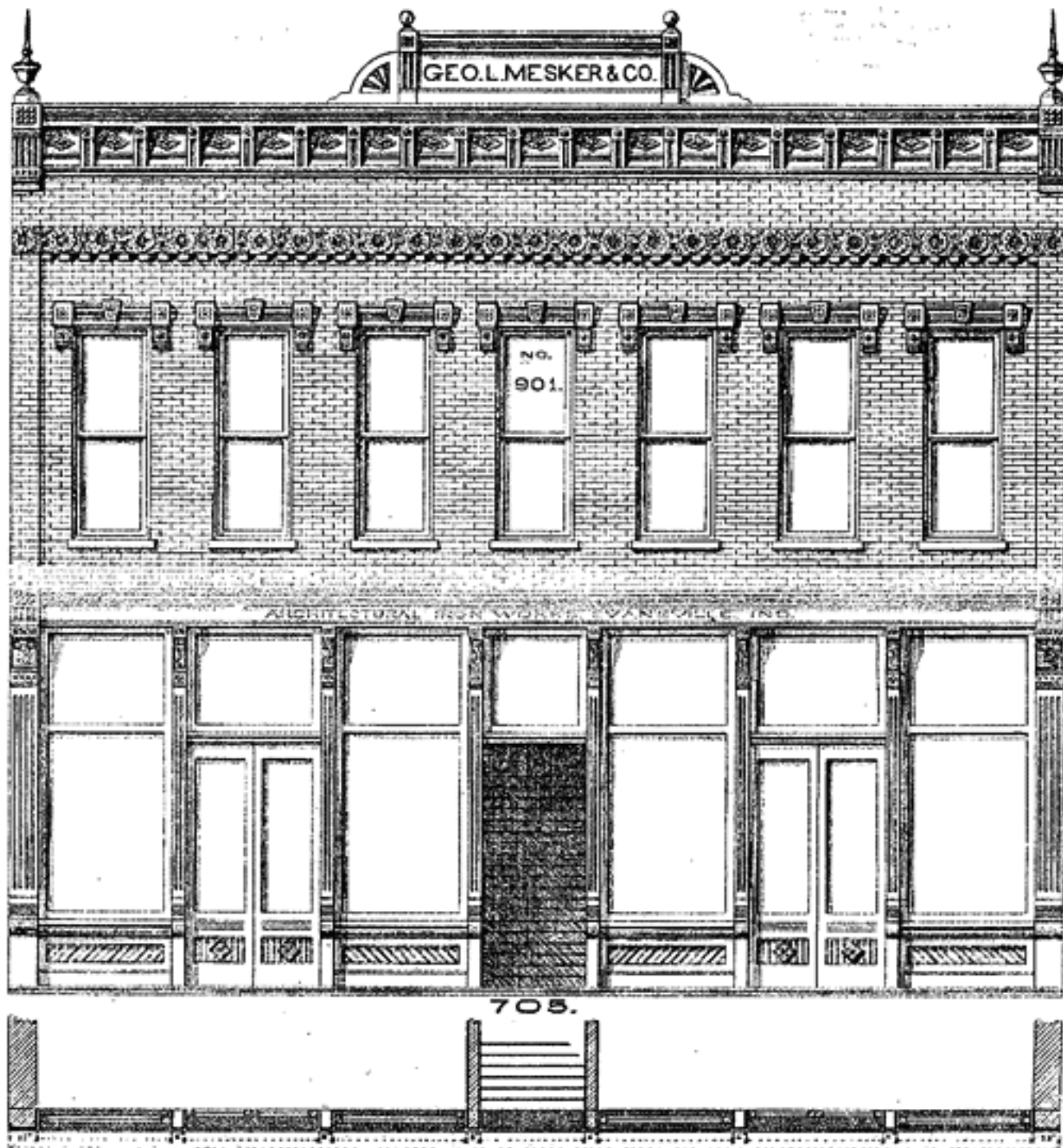


No. 353. Galvanized iron lintel cornice, main cornice, pediment, scrolls and urns, for 20 ft. front, \$55.55.



No. 802. Cast iron sills, lintels and columns, for 20 ft. front, \$81.35.

No. 901. Galvanized iron lintel cornice, main cornice, pediment, scrolls, urns and window caps, for 40 ft. front. \$116.15. (Left course extra.)

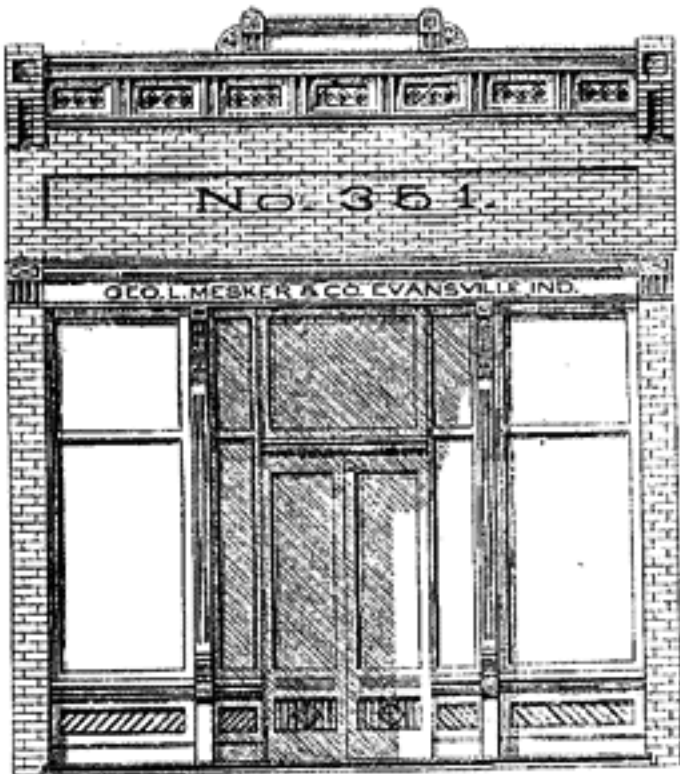


No. 705. Cast iron sills, lintels and columns, for 40 ft. front. \$255.60.

We furnish all work set up, and in as large parts as can be crated for shipment, and therefore no trouble is experienced in putting it up. Any mechanic of ordinary ability can set our work. We have received many testimonials from carpenters and others, stating that our work was put up with less trouble than they anticipated.

No. 351. Galvanized iron lintel cornice, main cornice and pediment, for 20 ft. front, \$36.50.

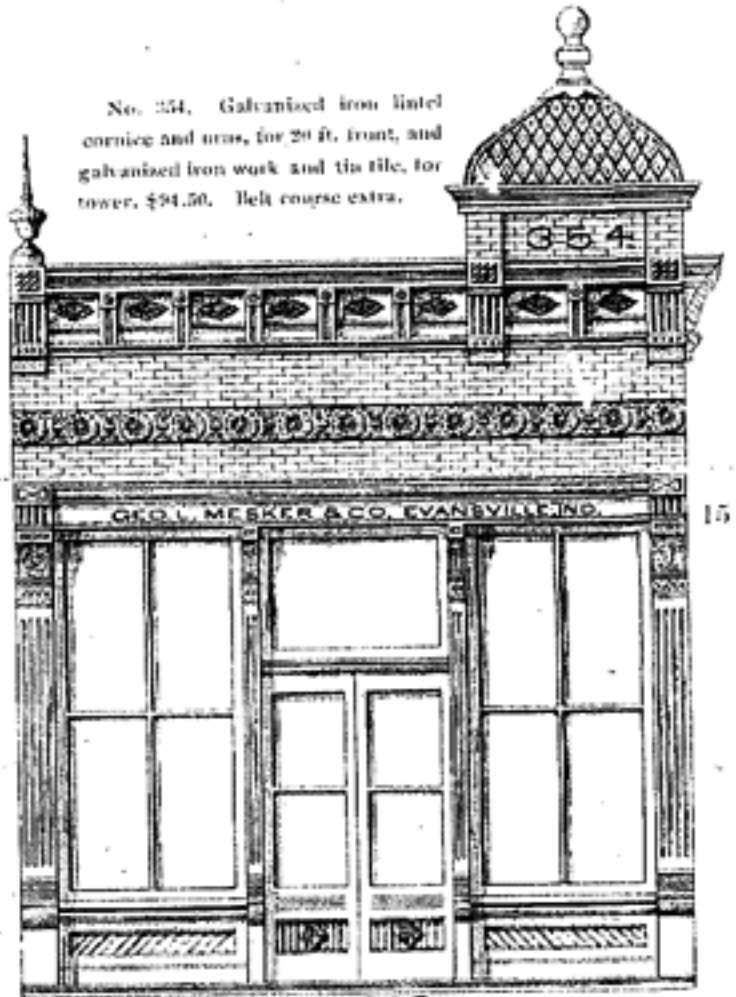
No. 808. Cast iron sills, lintels and columns, for 20 ft. front, \$81.75.



808.

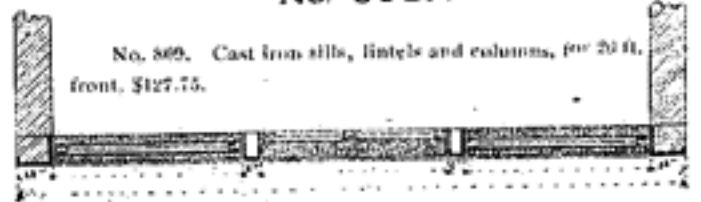


No. 354. Galvanized iron lintel cornice and arched, for 20 ft. front, and galvanized iron work and tile tile, for tower, \$94.50. Belt course extra.



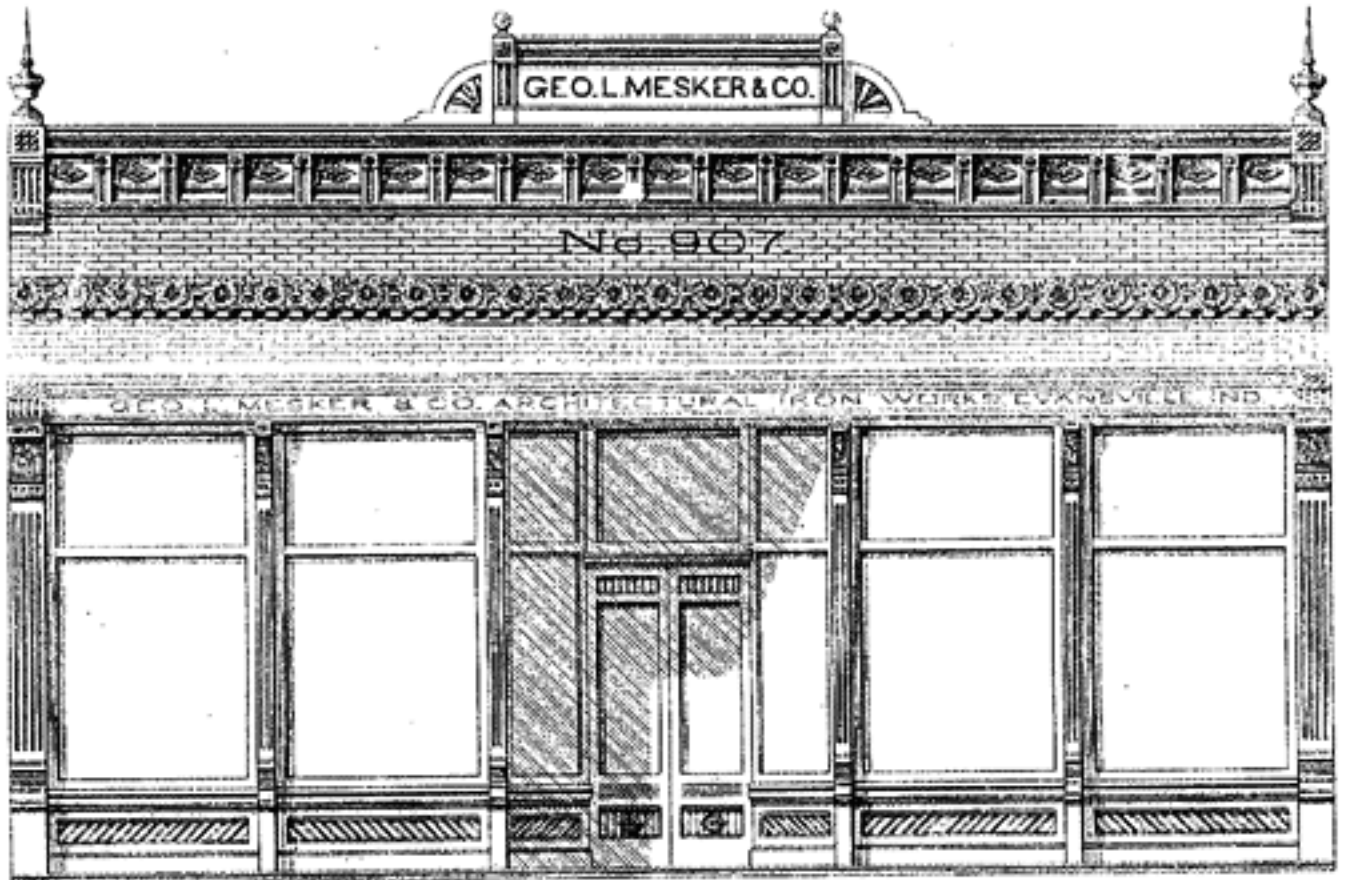
No. 809.

No. 809. Cast iron sills, lintels and columns, for 20 ft. front, \$127.75.



We make work in large quantities, and keep a full stock always on hand, and we can fill all orders promptly and at bottom prices. Our goods are superior to any in the market, and never fail to give complete satisfaction. We invite comparison of our work with any other, and point with pride to the superior quality and beauty of the hundreds of fronts which we furnished during the past year.

No. 907. Galvanized iron hotel cornice, main cornice, pediment, scrolls and nuts, for 40 ft. brick front. \$111.15. Belt course, extra.



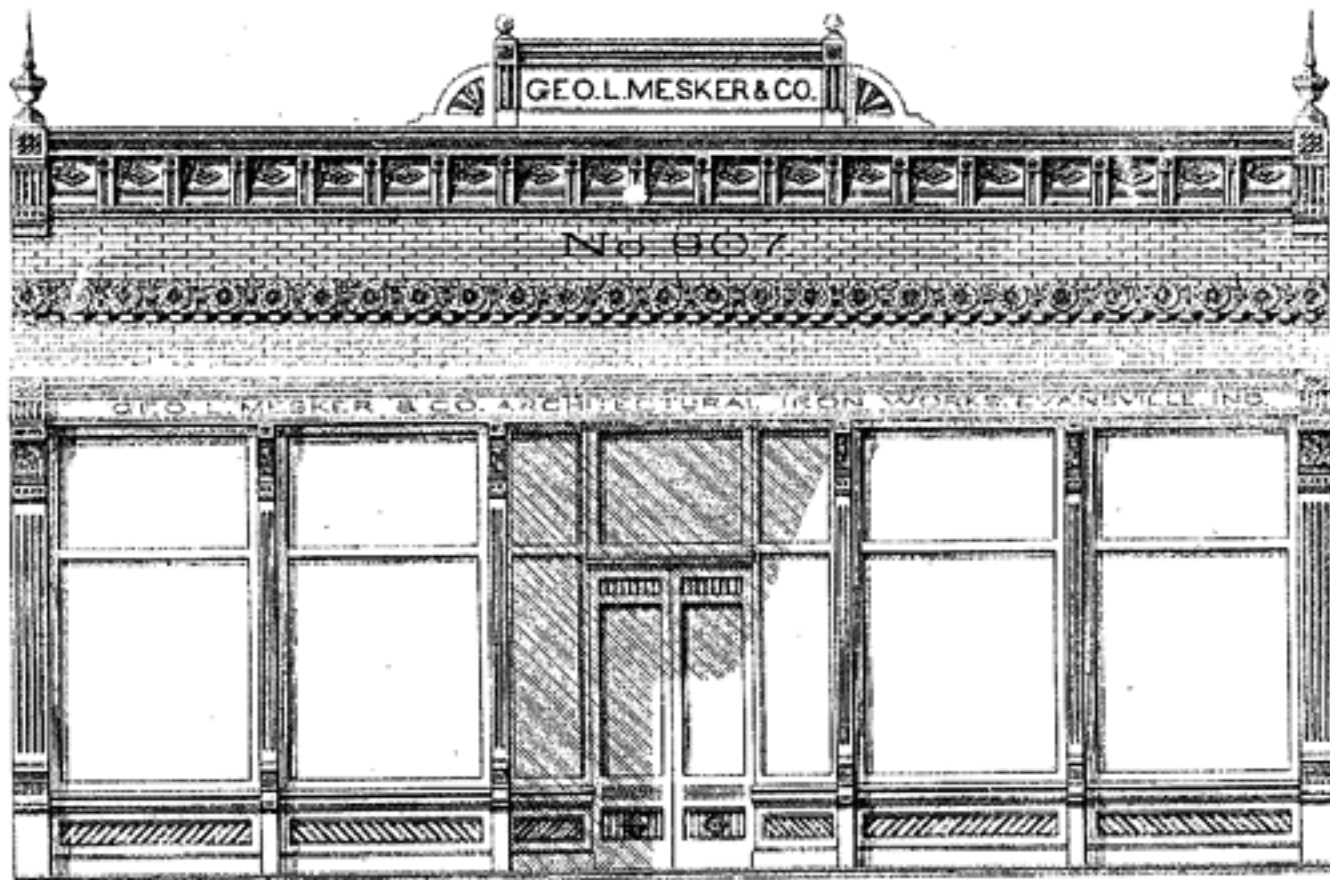
No. 710.



No. 710. Cast iron sills, lintels and columns, for 40 ft. front, \$211.15.

We make work in large quantities, and keep a full stock always on hand, and we can fill all orders promptly and at bottom prices. Our goods are superior to any in the market, and never fail to give complete satisfaction. We invite comparison of our work with any other, and point with pride to the superior quality and beauty of the hundreds of fronts which we furnished during the past year.

No. 307. Galvanized iron lintel cornice, main cornice, pediment, scrolls and urns, for 40 ft. brick front, \$111.15. Belt course, extra.



No. 710.

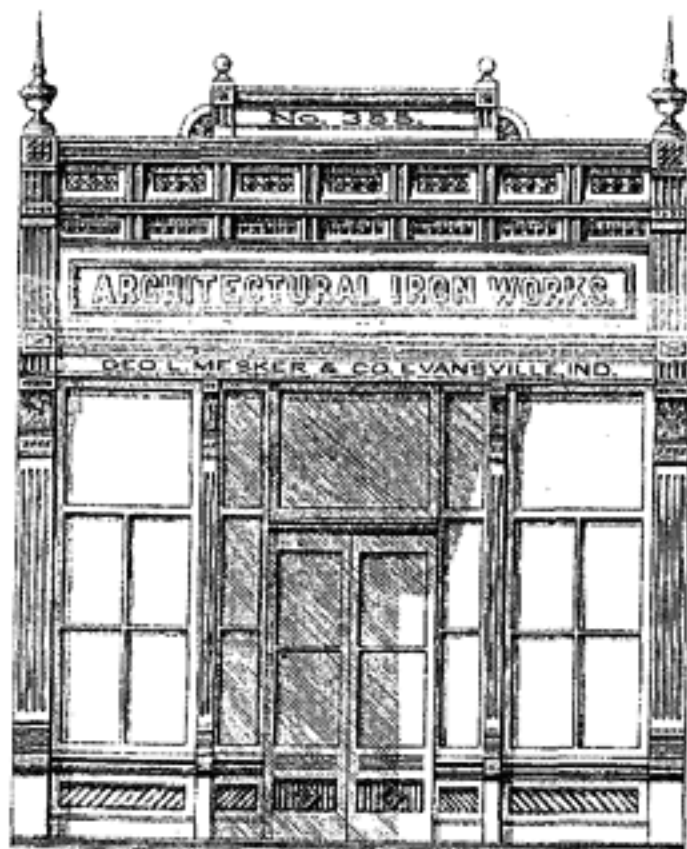


No. 710. Cast iron sills, lintels and columns, for 40 ft. front, \$211.15.

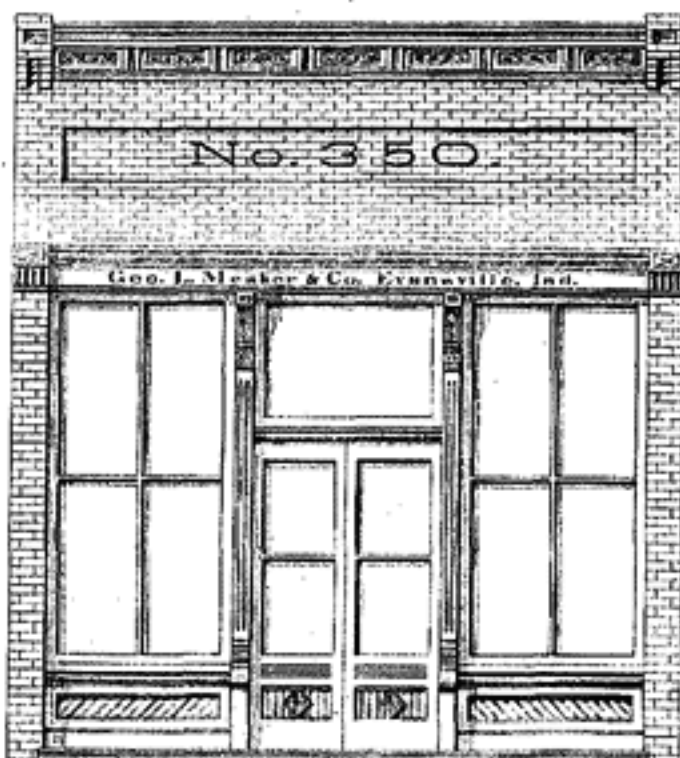
Every argument and consideration favors a nice brick front for a store building with cast iron columns for first story, galvanized iron cornice and window caps, for ornamentation. This will make what we call a modern, substantial building, that will never go out of style and will need no repairs, and upon which a cheap rate of insurance can be obtained. Many innovations have been made, but after they have been tried a while, they sink into obscurity. It is our desire to furnish fronts that we will not be ashamed of twenty years hence, and that is why our customers are so well satisfied with our work.

No. 355. Galvanized iron front, for building 20 ft. wide, \$83.35.

No. 811. Cast iron sills, lintels and columns, for 20 ft. front, \$127.75.



No. 359. Galvanized iron lintel cornice and main cornice, for 20 ft. front, \$26.15.



No. 812. Cast iron sills, lintels and columns, for 20 ft. front, \$83.35.

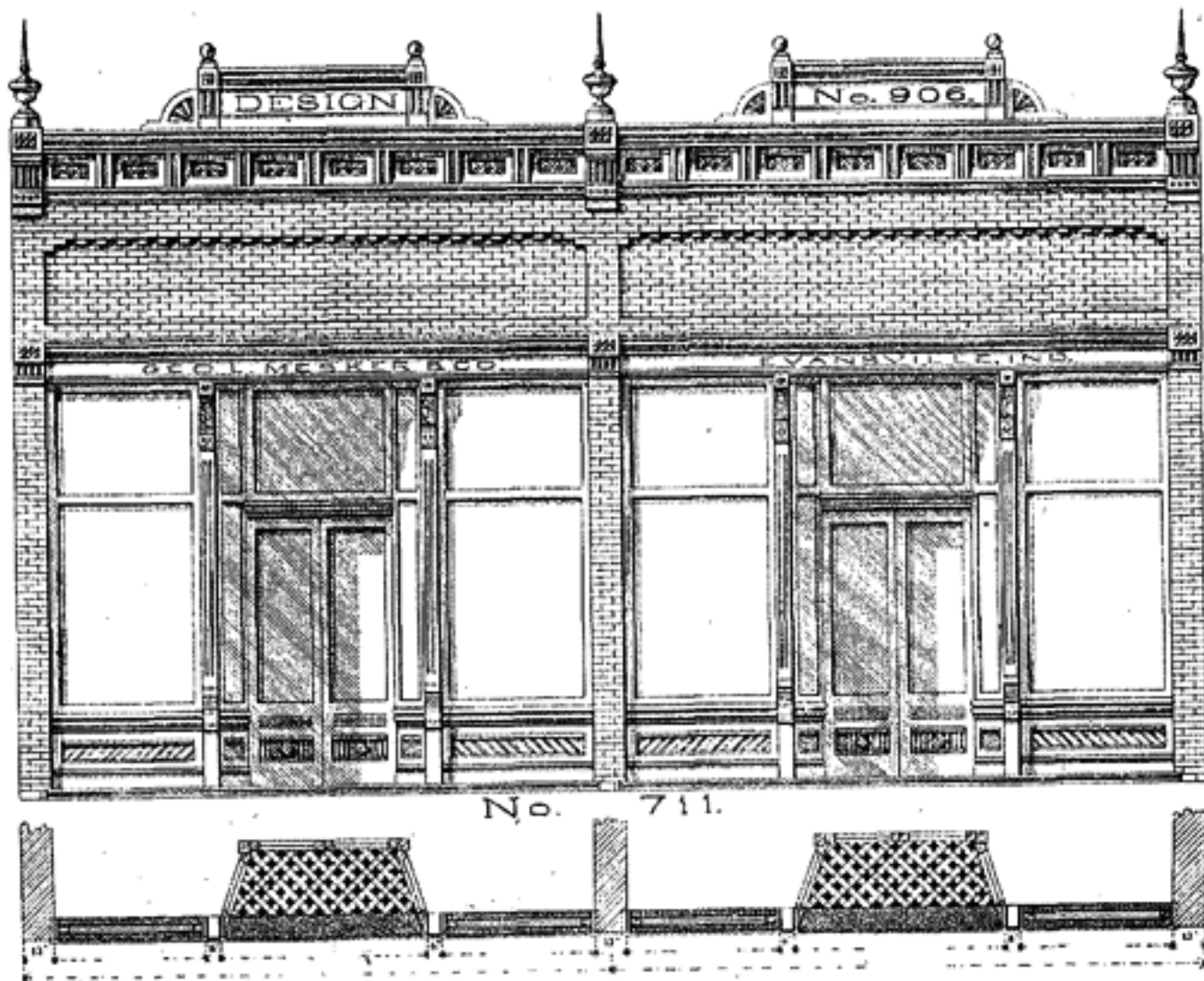


GALVANIZED STEEL BRICK FRONTS.

Galvanized steel brick, for frame or brick store fronts, have largely superseded the ordinary galvanized iron fronts. The front shown on opposite page, which are of this construction, have the appearance of fine pressed brick fronts, and look more substantial than the old style galvanized iron fronts. They are put up more easily, and can be placed by ordinary mechanics without any trouble whatever. To those who prefer sheet metal to brick fronts, we recommend this construction.

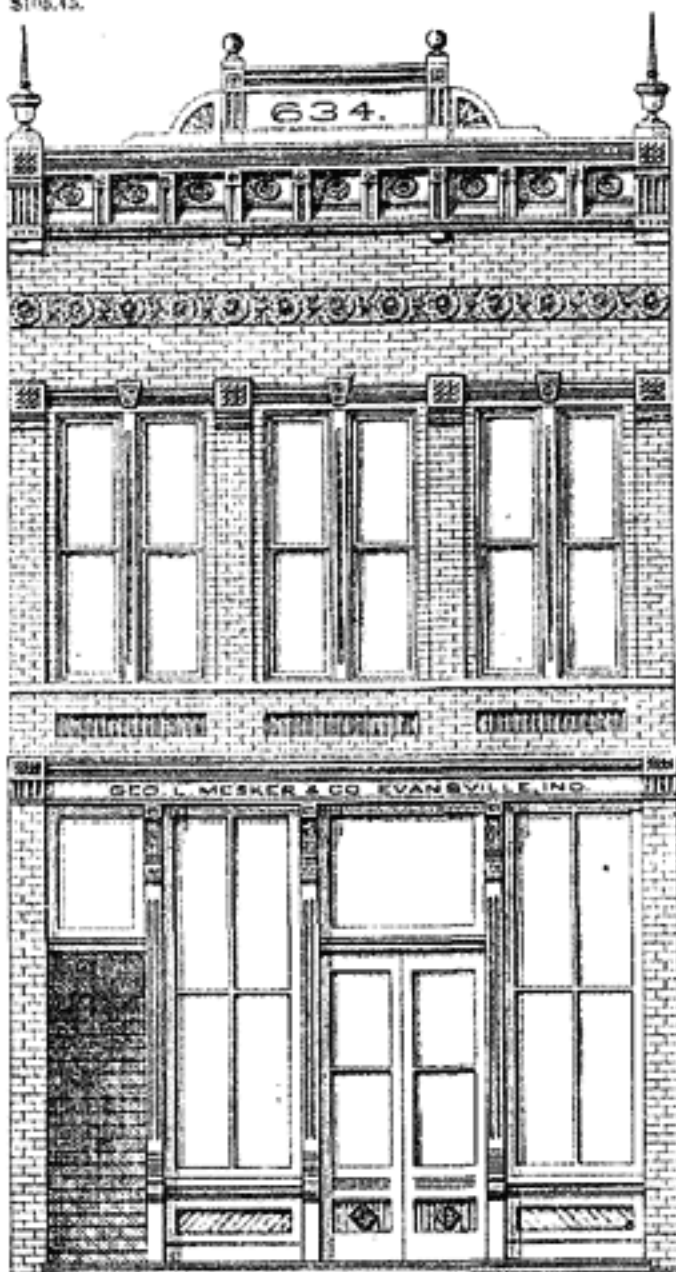
No. 906. Galvanized iron lintel cornice, main cornice, pediments, scrolls and urns, for 40 ft. front, \$80.00.

No. 711. Cast iron sills, lintels and columns, for 40 ft. front, \$104.75.



No. 634. Galvanized iron and steel brick front. Galvanized iron main and lintel cornice, window caps, pediment, scrolls and urns, belt course and galvanized steel brick. for 20 ft. front, \$116.70.

No. 814. Cast iron sills, lintels and columns, for 20 ft. front, \$105.45.

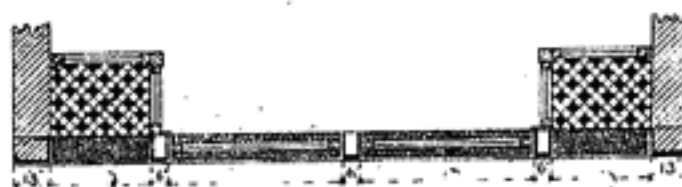
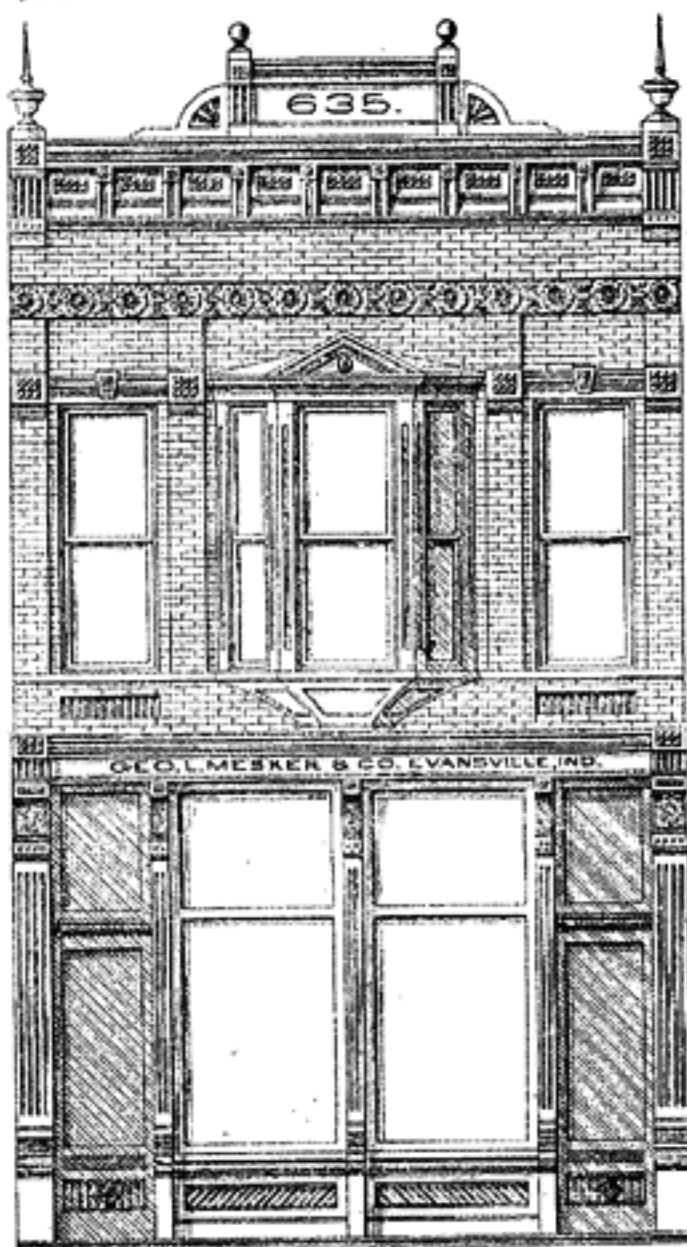


814.



No. 635. Galvanized iron and steel brick front. Galvanized iron main and lintel cornice, window caps, cornice and corbel for bay window, pediment, scrolls, urns and galvanized steel brick. for 20 ft. front, \$135.60.

No. 816. Cast iron sills, lintels and columns, for 20 ft. front, \$150.00.



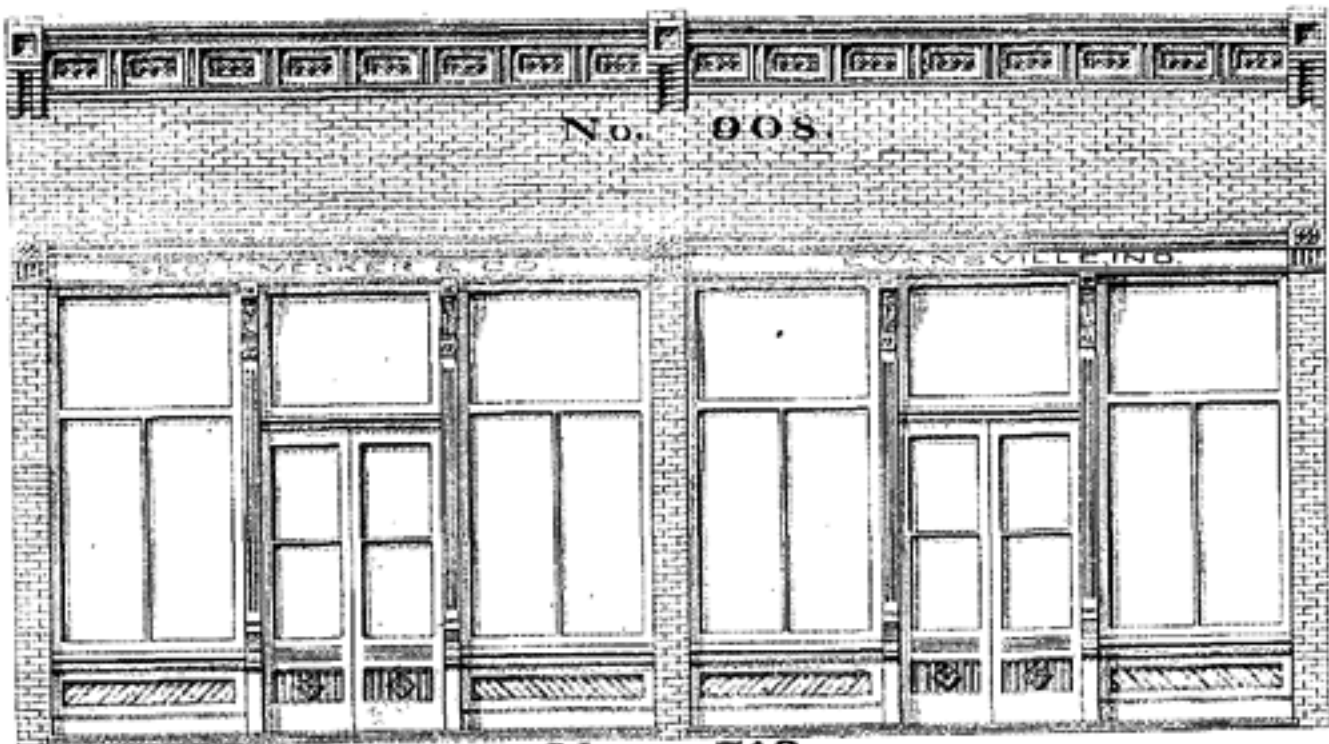


Sheet Steel Pressed Brick.

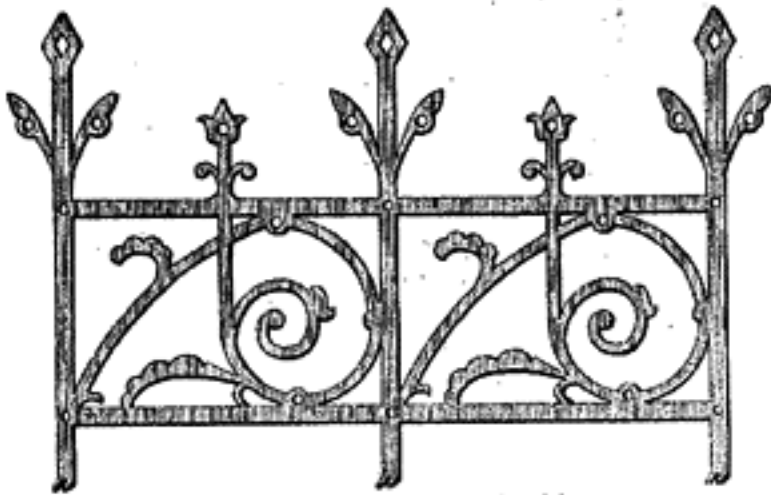
This is an entirely new device in sheet steel building material, lately placed on the market. We feel confident that builders, architects, contractors and property owners will see the advantage of this pattern in sheet steel for outside covering on buildings of all kinds, in preference to the old style "flat" and "corrugated" iron. This new form has the perfect appearance of the finest brick made. The galvanized steel brick is also a superior material for the fronts of buildings, and when used in connection with lintel cornice, main cornice, window caps and other suitable ornamentation, it gives to the building the appearance of having a substantial pressed brick

front. Our designs, No. 634 and 635, are arranged for this kind of construction, and we recommend this style to parties who desire galvanized iron fronts, as being superior to the latter in every respect.

No. 908. Galvanized iron lintel cornice and main cornice, for 40 ft. front, \$66.75.

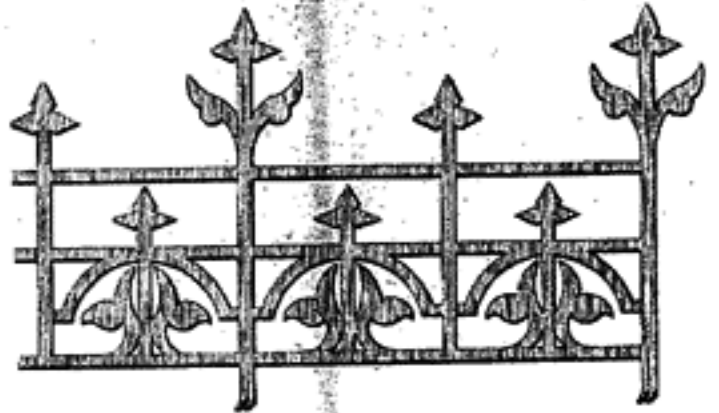


No. 712. Cast iron sills, lintels and columns, for 40 ft. front, \$106.75.



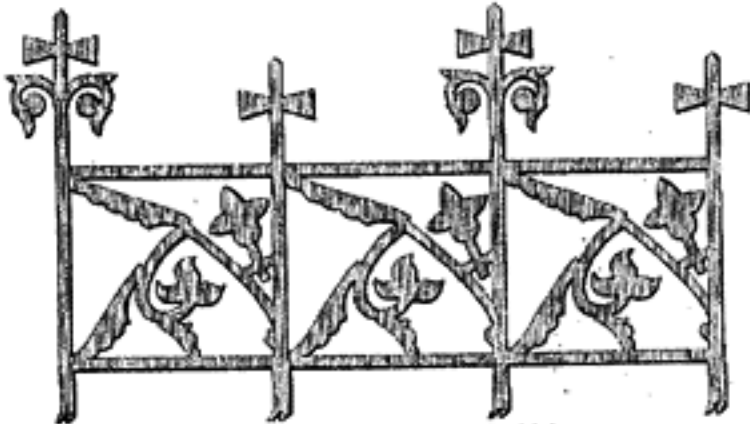
Cast Iron Cresting, No. 7, 21 in. high.

Price, 40c. per foot



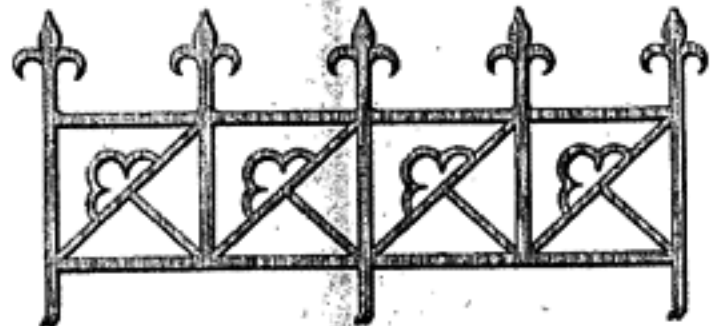
Cast Iron Cresting, No. 9, 17 in. high.

Price, 25c. per foot.



Cast Iron Cresting, No. 8, 18 in. high.

Price, 33½c. per foot.



Cast Iron Cresting, No. 10, 14 in. high.

Price, 22½c. per foot.



No. 1.



No. 2.



No. 3.



Galvanized Iron Cresting, 25c. per foot.

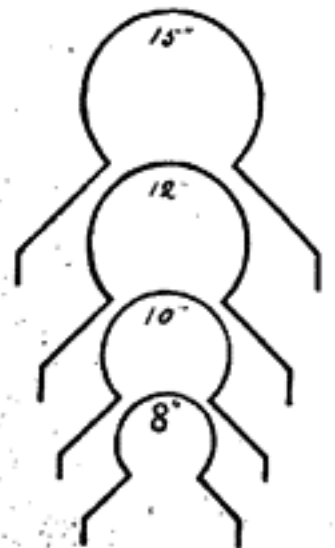


No. 4. Cresting Ornament, 25c. each.



No. 349. Galvanized Iron Ridge Roll.

Price, 8 in. girth, 6c per ft.; 10 in. 7½c; 12 in. 9c; 14 in. 11c.





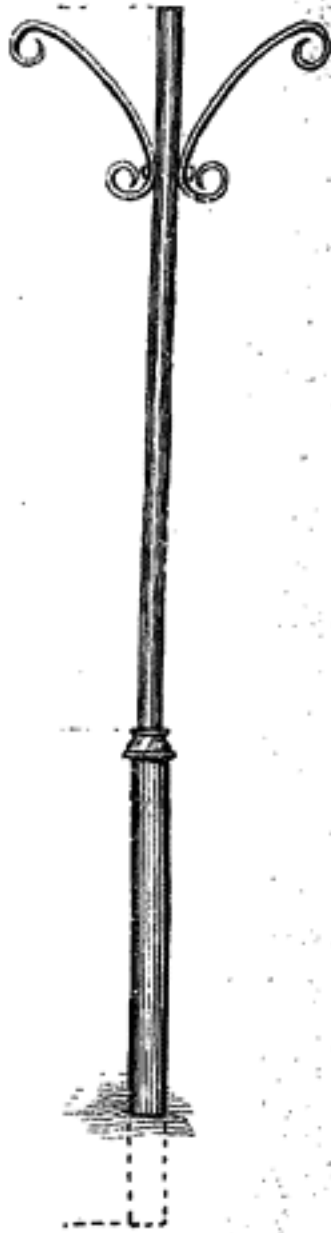
CAST IRON LINTEL

Single or double rib. Prices on application.



CAST IRON SILL

Prices on application.



Wrought iron pipe awning posts.
Write for prices.

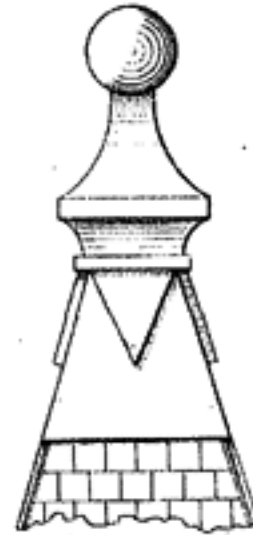


No. 5, \$11.50.

Galvanized Iron Finials



No. 6, \$9.00.



No. 12, \$5.00.
Galvanized Iron Finial



No. 383.



No. 384.



No. 386.



No. 388.



No. 389.



No. 371.

Galvanized Iron Window Caps.
Prices on application.



No. 352.



No. 350, SKY LIGHTS.

Our sky lights are made in the best possible manner
and never leak. Write for prices.



No. 25.

ELEVATOR HOIST.

HAND POWER.

For small business houses and places where it will not warrant the outlay of large sums of money for expensive elevators, this hoist will make a first-class hand power machine for raising and lowering stoves, hardware, etc. Any mechanic can build the platform, put up the guides, and place gearing in position. The gearing is fitted with double brake, so that it is perfectly safe when loading, and can not run down itself. It is strong and durable and equal to any made.

Capacity 500 and 1000 pounds. Gearing includes all fixtures to guide rope to one side for counter-balance weight, rope to lift 16 feet and counter-balance weight, the shaft made any length so that hand rope will come to one side of the hatchway; all complete to put up. In ordering give distance from center of hatchway to hand rope.

Price, not including iron work for platform.
Capacity, 500lbs. \$35.00. Extra lift, 25c per foot.
" 1000lbs. 45.00. " 30c "

NOTE: EXTRA LIFT INCLUDES ALL ROPES.

The iron work for platform includes four roller guides, three rollers in each, to prevent friction of platform against guide posts; four braces, two knees, and one eye-bolt for the cross-tie.

PRICE, EXTRA \$15.00.

IN ORDERING

Give distance from center of opening to where hand rope is to be. State total height from lowest floor to position of machine. Show position of hand rope and counterbalance weight.

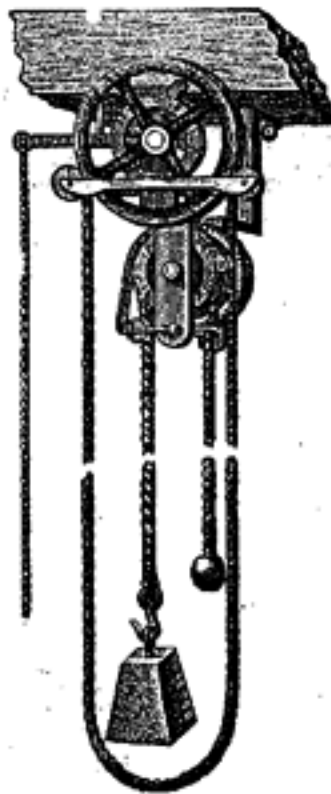
PATENT PORTABLE

Rope Hoists and Elevators

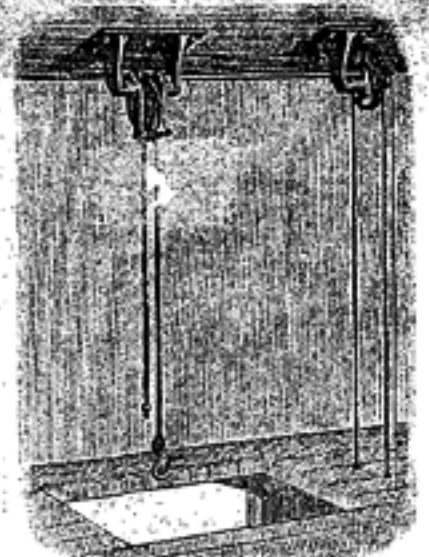
SIMPLE, CHEAP AND DURABLE.



The operation of these hoists is very simple. Pull on the hand rope to lift. To lower, pull on the brake rope and the load will drop to any point desired, either fast or slow. The load will stand at any point. These are first-class lifting machines, made and proportioned so that one man can lift the full capacity that the machine is built to lift. Rope hoists have many advantages over chain hoists, the rope being easier on the hands, and when worn out can be easily replaced.



No. 26.



No. 27.

HATCHWAY HOIST.

WITH LONG SHAFT.

The perfection of hoisting machines.

A better, safer, simpler and cheaper machine than the old rope wheel and drum. They will lift to the full capacity with perfect safety to the operator.

PRICE LIST.

No.	Lift.	To Raise.	Price.	Extra lift per ft.
6	16ft.	500lbs.	\$35.00	25 cents.
7	16ft.	1000lbs.	45.00	30 cents.

In ordering state distance from center of hatchway to hand rope.

Note.—Extra Lift Includes all Ropes.

No. 26.

HATCHWAY HOIST.

WITH SHORT SHAFT.

Was designed to meet the demand for a quick lift rig, cheap hoist to be used in raising and lowering goods from floor to floor, where the business does not warrant the expense, or space admit of a platform hoist or elevator. The structure is very compact, and is controlled by automatic brake, which holds the load at any point.

Distance between hand rope and load rope, 7 1/2 in.

PRICE LIST.

No.	Fert.	To Raise.	Weight.	Price.	Extra lift per ft.
4	16	500	115lbs.	\$30.00	25 cents.
5	16	1000	125lbs.	35.00	30 cents.

Note.—Extra Lift Includes all Ropes.

94
CHEAP, MODERN STORE FRONTS.



GEO. L. MESKER & CO.,

✦ Architectural ✦ Iron ✦ Works ✦

EVANSVILLE, INDIANA.



NOTE.—Our foundry, machine shops, pattern shop, blacksmith department and storage room were destroyed by fire on Oct. 16, 1891. We at once purchased more ground and had plans prepared for a mammoth building, to accommodate our immense business. The cut on the first page of this catalogue does not do justice to our new building, which is one of great beauty in detail and ornamentation. It fronts 310 feet on Ingle street, reaching from Water to First streets, fronting on the latter 150 feet. We have put in new machinery and appliances in every department, and now have facilities greater than ever before to furnish work of the highest grade, and to fill orders promptly and satisfactorily. As we are fortunately situated at a point where labor and supplies are cheap, we have no hesitation in saying that no house in the country has finer facilities for furnishing good, honest work at low prices than we have.